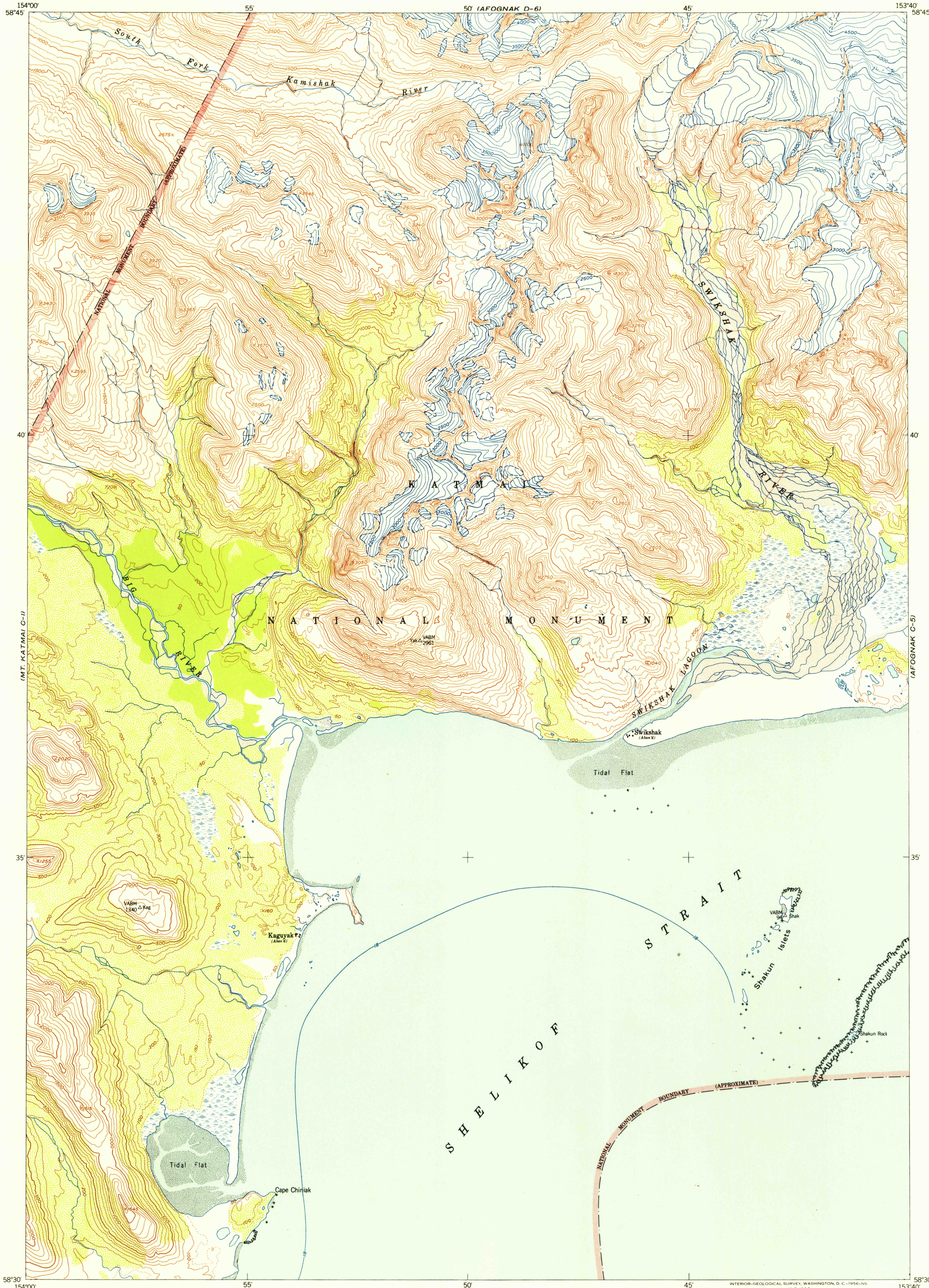


(MT. KATMAI D-1)

UNITED STATES
DEPARTMENT OF THE INTERIOR
GEOLOGICAL SURVEY

AFOGNAK (C-6) QUADRANGLE
ALASKA-THIRD JUDICIAL DIVISION
1:63 360 SERIES (TOPOGRAPHIC)

(AFOGNAK D-5)



U.S.G.S.
FILE COPY
TOPOGRAPHIC DIVISION

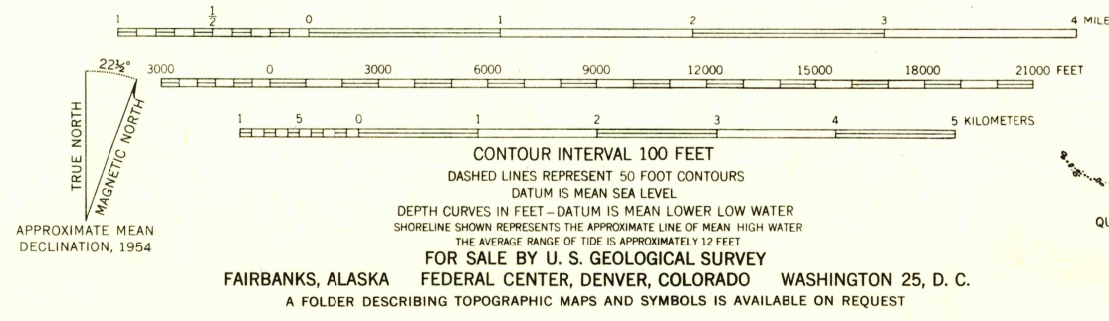
USGS
Historical File
Topographic Division

U.S.G.S.
FILE COPY
TOPOGRAPHIC DIVISION

HISTORICAL

APR 20 1956

Mapped, edited, and published by the Geological Survey
Control by USC&GS and USCE
Hydrography compiled from USC&GS charts 8502 (1:969,761 scale)
and 8556 (1:350,000 scale), and from aerial photographs
Topography from aerial photographs by multiplex methods 1954
Aerial photographs taken 1951. Map not field checked
Universal Transverse Mercator projection, zone 5
1927 North American datum
Unchecked elevations are shown in brown



ROAD CLASSIFICATION

ALL WEATHER ROADS	DRY WEATHER ROADS
Hard-surface.....None	Improved dirt.....None
Other.....None	Unimproved dirt.....None
Trails.....None	

AFOGNAK (C-6). ALASKA
N5830-W15340/15X20
1951

(MT. KATMAI A-1 AND B-1)

