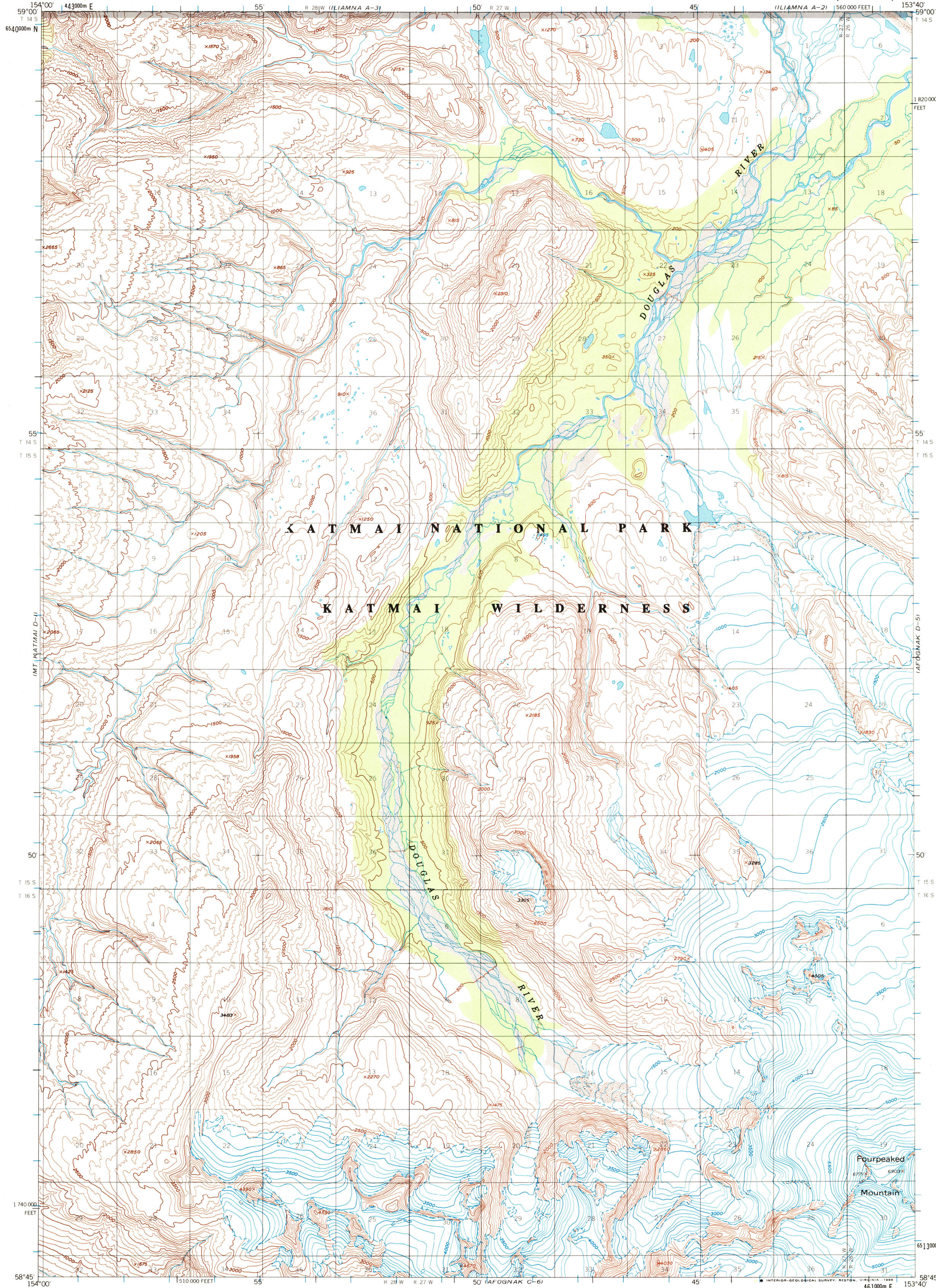
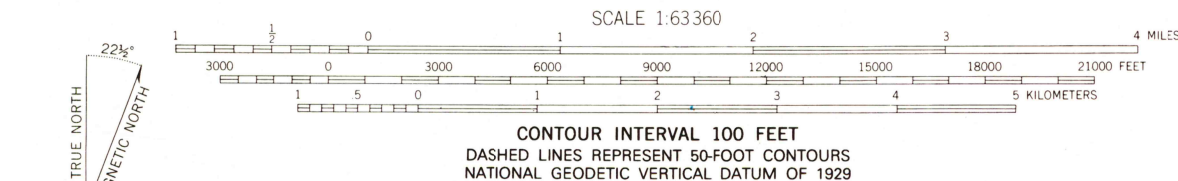


UNITED STATES
DEPARTMENT OF THE INTERIOR
GEOLOGICAL SURVEY

AFOGNAK (D-6) QUADRANGLE
ALASKA-KENAI PENINSULA BOROUGH
1:63 360 SERIES (TOPOGRAPHIC)



Mapped, edited, and published by the Geological Survey
Control by USCE
Topography by photogrammetric methods from aerial photographs
taken 1951. Map not field checked
Projection and 1000-meter grid ticks shown in blue:
Universal Transverse Mercator, zone 5
10,000-foot grid ticks based on Alaska coordinate
system, zone 5. 1927 North American Datum
To place on the predicted North American Datum 1983 move
the projection lines 77 meters north and 130 meters east.
Land lines represent unsurveyed and unmarked locations
predetermined by the Bureau of Land Management
Folio S-17, Seward Meridian
Swamps, as portrayed, indicate only the wetter areas,
usually of low relief, as interpreted from aerial photographs
Federal reservation boundaries established by The Alaska National
Interest Lands Conservation Act, PL 96-487, Dec. 2, 1980, are
shown as compiled by the administering agencies
There may be private inholdings within the boundaries of
the National or State reservations shown on this map



ROAD CLASSIFICATION
No roads or trails in this area

FOR SALE BY U. S. GEOLOGICAL SURVEY
FAIRBANKS, ALASKA 99701, DENVER, COLORADO 80225, OR RESTON, VIRGINIA 22092
A FOLDER DESCRIBING TOPOGRAPHIC MAPS AND SYMBOLS IS AVAILABLE ON REQUEST

AFOGNAK (D-6), ALASKA
58153-G6-TF-063
1951
MINOR REVISION 1983

