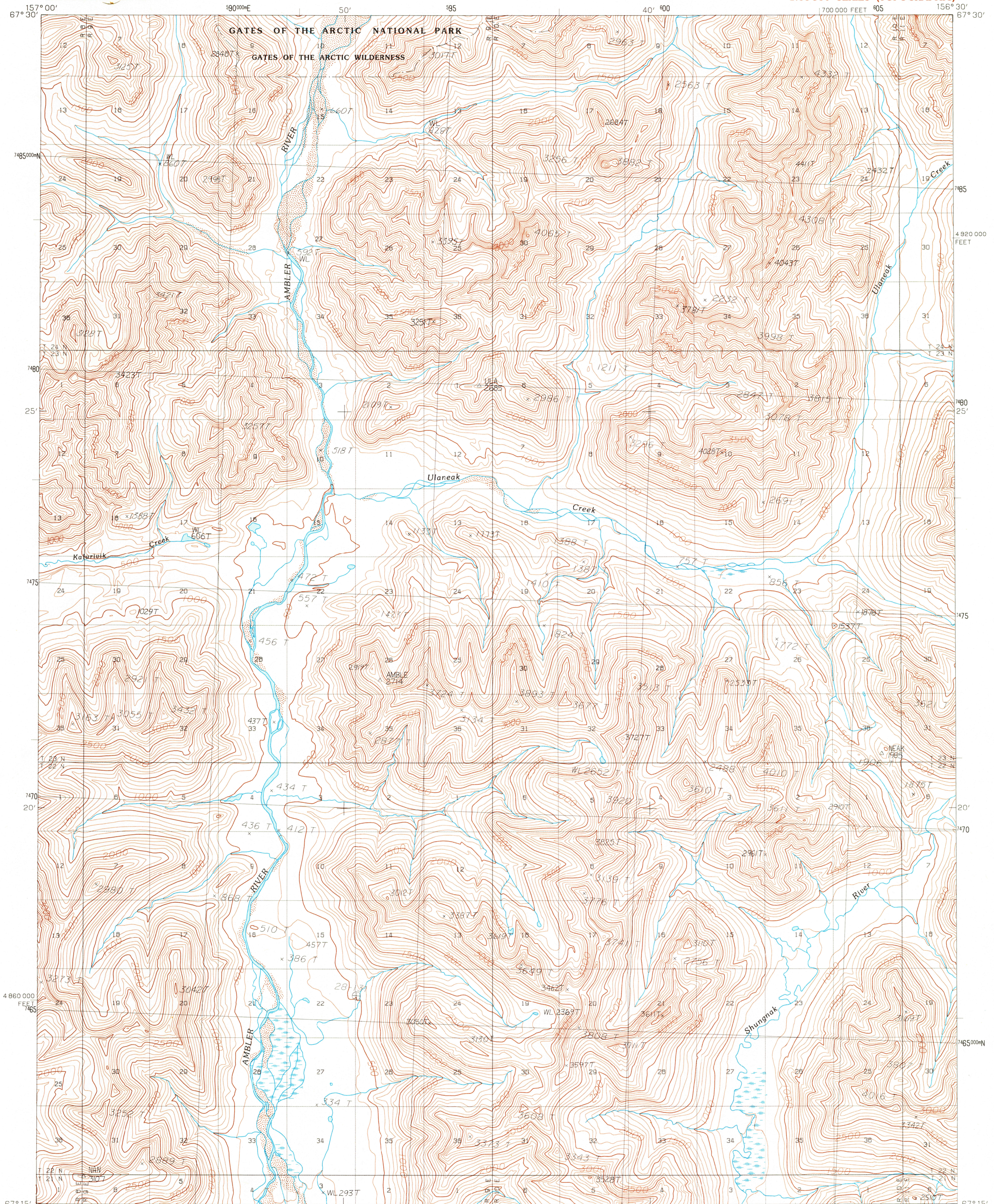


UNITED STATES
DEPARTMENT OF THE INTERIOR
GEOLOGICAL SURVEY

AMBLER RIVER (B-2) QUADRANGLE
ALASKA-NORTHWEST ARCTIC BOROUGH
1:63 360 SERIES (TOPOGRAPHIC)



PRODUCED BY THE UNITED STATES GEOLOGICAL SURVEY
CONTROL BY USGS, NOS/NOAA
COMPILED FROM AERIAL PHOTOGRAPHS TAKEN 1978 AND 1981
MAP NOT FIELD CHECKED. MAP EDITED 1990
PROJECTION UNIVERSAL TRANSVERSE MERCATOR
GRID 5000-METER UNIVERSAL TRANSVERSE MERCATOR ZONE 4
20,000-FOOT STATE GRID TICS ALASKA, ZONE 6
UTM GRID DECLINATION 2°05' EAST
1990 MAGNETIC NORTH DECLINATION 23° EAST
VERTICAL DATUM NATIONAL GEODETIC VERTICAL DATUM OF 1929
HORIZONTAL DATUM 1927 NORTH AMERICAN DATUM
To place on the predicted North American Datum of 1983, move
the projection line 62 meters north and 124 meters east
Land lines represent unsurveyed and unmarked locations prede-
termined by the Bureau of Land Management, Folio K-2, Kateel River
Meridian
There may be private inholdings within the boundaries of any
Federal or State Reservations shown on this map
Federal Reservation boundaries established by the Alaska National
Interest Lands Conservation Act, PL 96-487, Dec. 2, 1980, are
shown as compiled by the administering agencies
Swamps, as portrayed, indicate only the wetter areas, usually of low
relief, as interpreted from aerial photographs

PROVISIONAL MAP
Produced from original
manuscript drawings. In-
formation shown as of date
of photography

To convert meters to feet multiply by 3.2808
To convert feet to meters multiply by .3048

FOR SALE BY U.S. GEOLOGICAL SURVEY, FAIRBANKS, ALASKA 99701
DENVER, COLORADO 80225, OR RESTON, VIRGINIA 22092

1	2	3	1 Ambler River (C-3)
2	3	4	2 Ambler River (C-2)
3	4	5	3 Ambler River (C-1)
4	5	6	4 Ambler River (B-3)
5	6	7	5 Ambler River (B-1)
6	7	8	6 Ambler River (A-3)
7	8	9	7 Ambler River (A-2)
8	9	10	8 Ambler River (A-1)

ADJOINING QUADRANGLE NAMES



QUADRANGLE LOCATION

ROAD LEGEND
No roads or trails in this area

AMBLER RIVER (B-2), ALASKA
PROVISIONAL EDITION 1990
67156-C5-TF-063

USGS MND HISTORICAL MAP
JUN 01 1998 90
REC'D FILE COPY