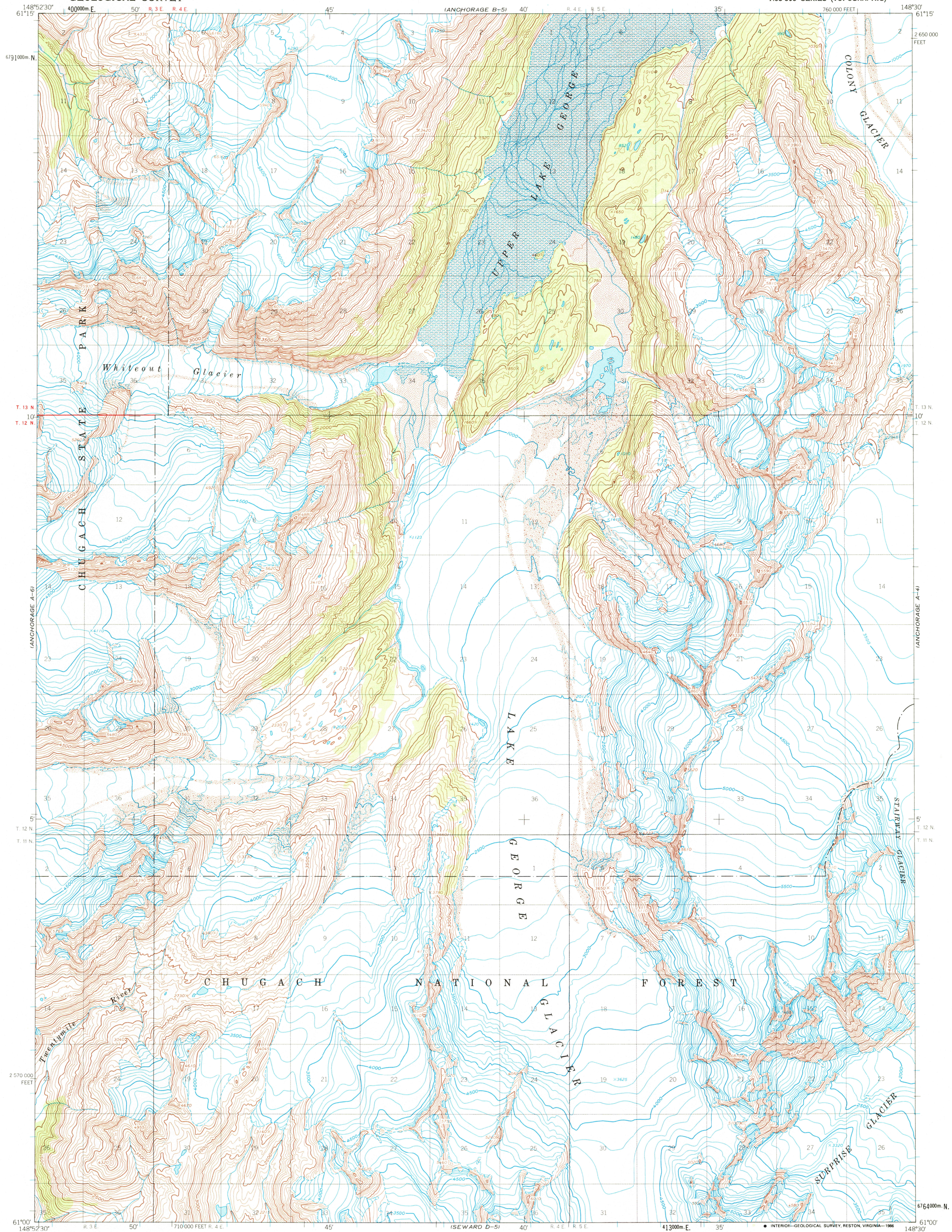


UNITED STATES
DEPARTMENT OF THE INTERIOR
GEOLOGICAL SURVEY

ANCHORAGE (A-5) QUADRANGLE
ALASKA—MUNICIPALITY OF ANCHORAGE
1:63 360 SERIES (TOPOGRAPHIC)



Mapped, edited, and published by the Geological Survey
Control by USGS and NOS/NOAA

Topography by photogrammetric methods from aerial photographs
taken 1957, field annotated 1960. Map not field checked

Projection and 1000-meter grid ticks shown in blue:
Universal Transverse Mercator, zone 6

10,000-foot grid ticks based on Alaska coordinate
system, zone 4, 1927 North American Datum

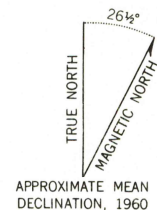
To place on the predicted North American Datum 1983 move
the projection lines 63 meters north and 117 meters east

Gray land lines represent unsurveyed and unmarked locations
determined by the Bureau of Land Management

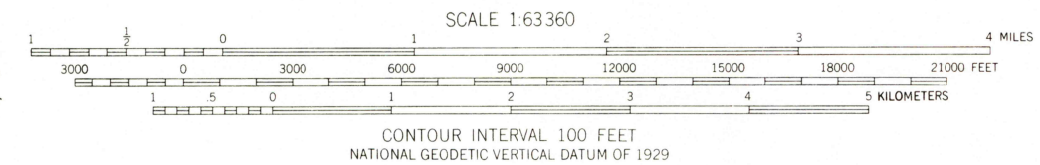
Folio S-14, Seward Meridian

Federal reservation boundaries established by The Alaska National
Interest Lands Conservation Act, PL 96-487, Dec. 2, 1980, are
shown as compiled by the administering agencies

There may be private inholdings within the boundaries of
the National or State reservations shown on this map



APPROXIMATE MEAN
DECLINATION, 1960



FOR SALE BY U. S. GEOLOGICAL SURVEY
FAIRBANKS, ALASKA 99701, DENVER, COLORADO 80225, OR RESTON, VIRGINIA 22092
A FOLDER DESCRIBING TOPOGRAPHIC MAPS AND SYMBOLS IS AVAILABLE ON REQUEST



ANCHORAGE (A-5), ALASKA
N6100-W14830/15X22.5

1960
MINOR REVISION 1985

ROAD CLASSIFICATION
No roads or trails in this area

USGS NMD HISTORICAL MAP

JUL 0 1 1986

REC'D FILE COPY