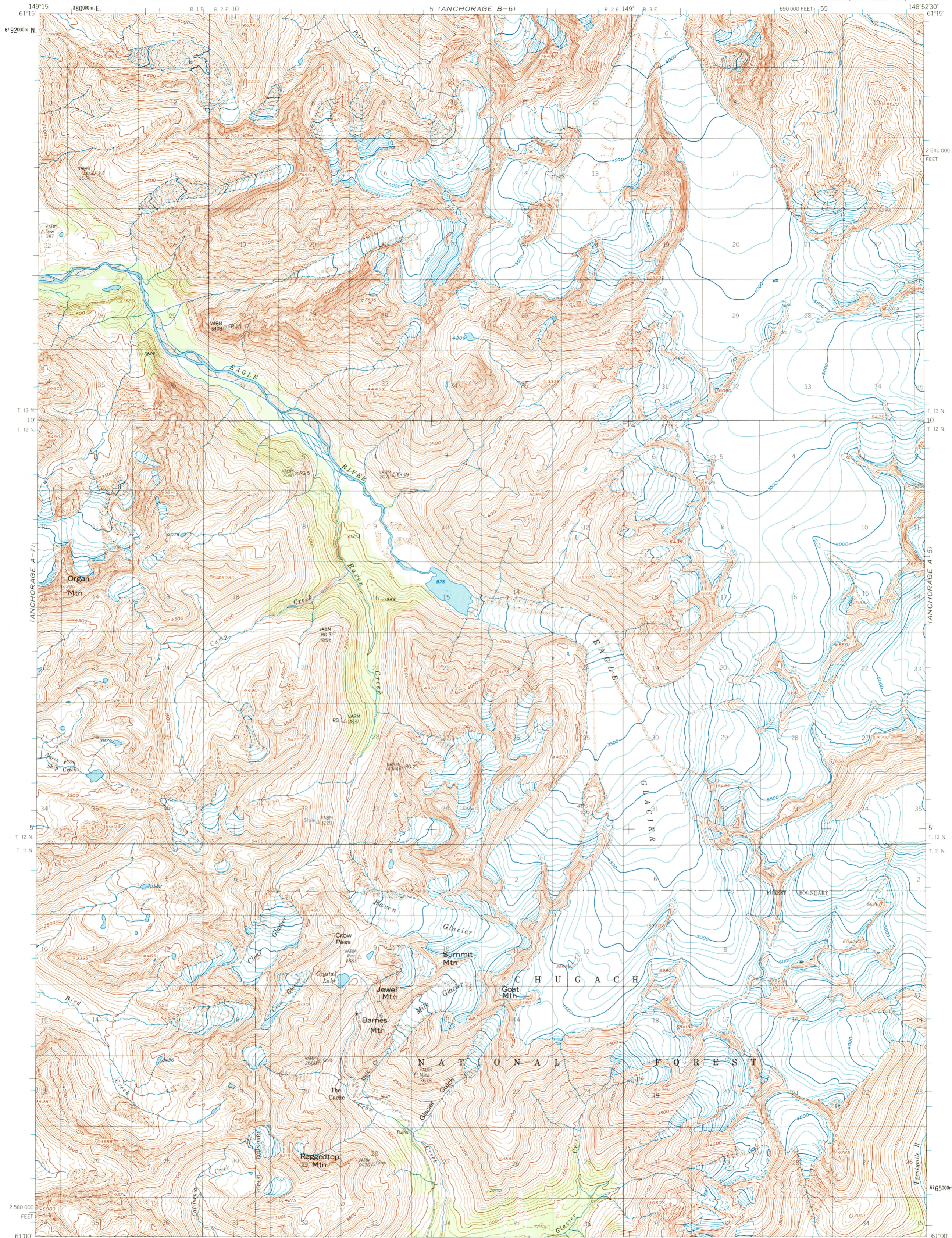


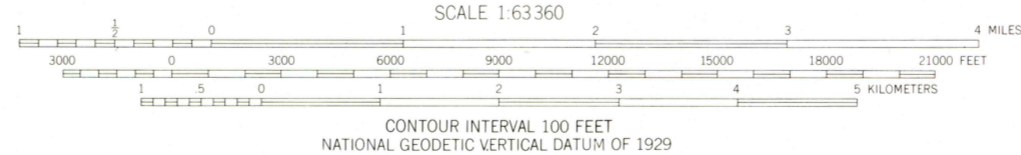
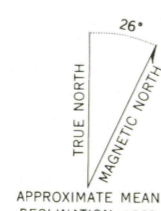
UNITED STATES  
DEPARTMENT OF THE INTERIOR  
GEOLOGICAL SURVEY

ANCHORAGE (A-6) QUADRANGLE  
ALASKA

1:63,360 SERIES (TOPOGRAPHIC)



Mapped, edited, and published by the Geological Survey  
Control by USGS, NOS/NOAA, and USCE  
Topography by photogrammetric methods from aerial photographs  
taken 1957, field annotated 1960. Map not field checked  
Projection and 1000-meter grid ticks shown in blue:  
Universal Transverse Mercator, zone 6  
10,000-foot grid ticks based on Alaska coordinate  
system, zone 4. 1927 North American Datum  
To place on the predicted North American Datum 1983 move  
the projection lines 63 meters north and 118 meters east  
Land lines represent unsurveyed and unmarked locations  
predetermined by the Bureau of Land Management  
Folio S-14, Seward Meridian  
Federal reservation boundaries established by The Alaska National  
Interest Lands Conservation Act, PL 96-487, Dec. 2, 1980, are  
shown as compiled by the administering agencies  
There may be private inholdings within the boundaries of  
the National or State reservations shown on this map



ROAD CLASSIFICATION  
Light-duty ————— Unimproved dirt - - - - -

ANCHORAGE (A-6), ALASKA  
N6100-W14852.5/15X22.5  
1960  
MINOR REVISION 1985

