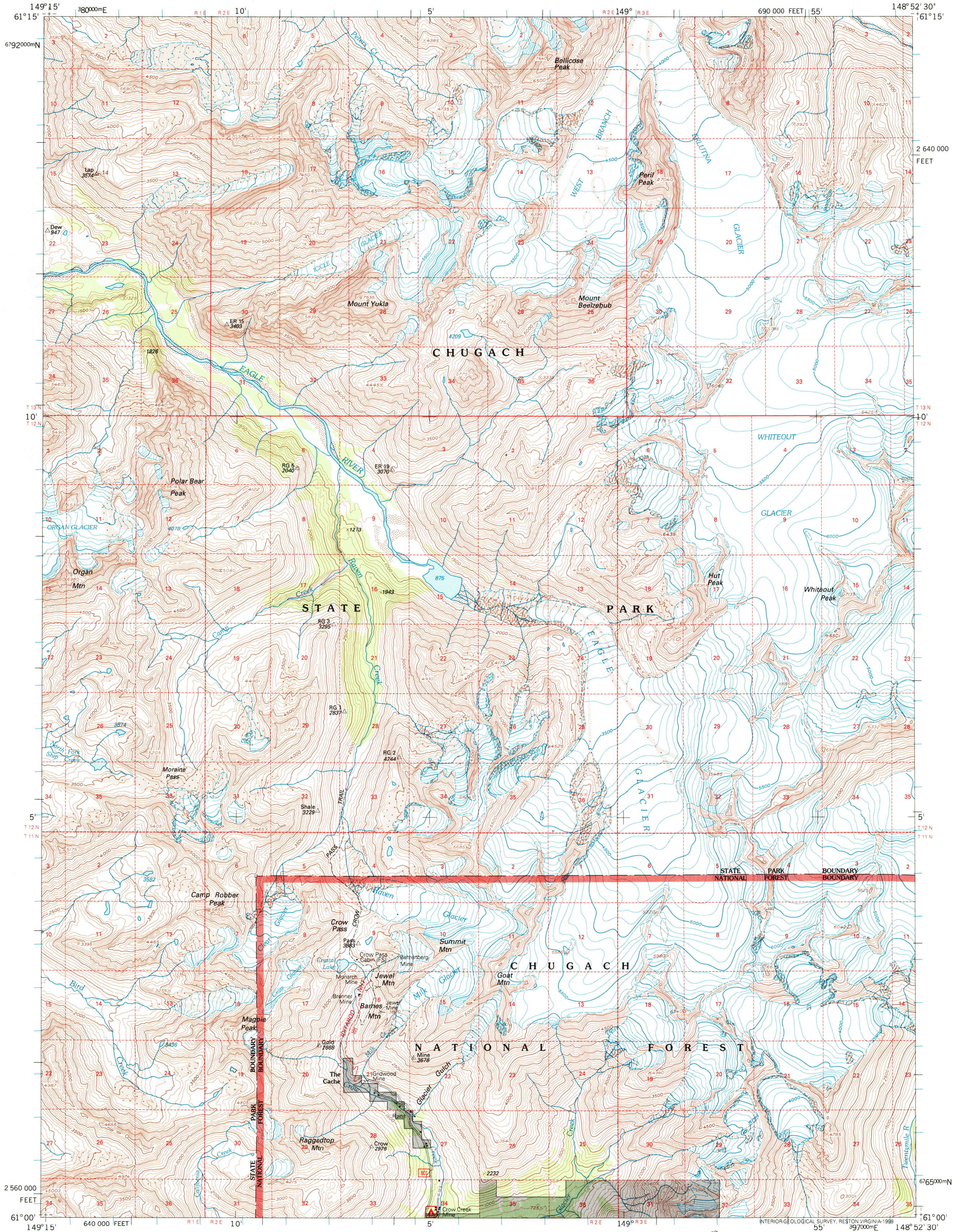


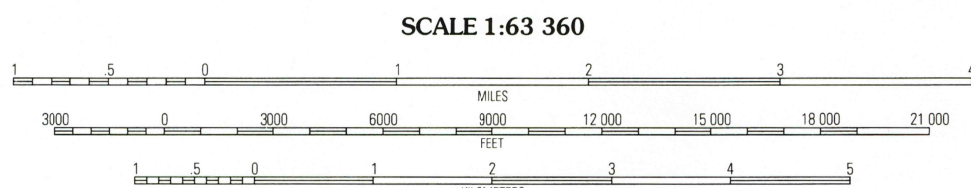
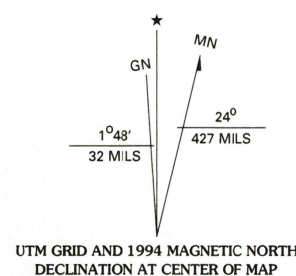
UNITED STATES
DEPARTMENT OF THE INTERIOR
GEOLOGICAL SURVEY

UNITED STATES
DEPARTMENT OF AGRICULTURE
FOREST SERVICE

ANCHORAGE A-6 QUADRANGLE
ALASKA - MUNICIPALITY OF ANCHORAGE
1:63 360 SERIES (TOPOGRAPHIC)



Produced by the U.S. Geological Survey
Revised by the U.S. Forest Service
Areas outside the National Forest System lands may not have been revised
Topography compiled 1957. Planimetry derived from imagery taken 1990
Public Land Survey System and survey control current as of 1994
Partial field check by U.S. Forest Service 1994
North American Datum of 1927 (NAD 27). Projection and 10 000-foot ticks:
Alaska coordinate system, zone 3 (Transverse Mercator).
Blue 1000-meter Universal Transverse Mercator ticks, zone 6
North American Datum of 1983 (NAD 83) is shown by dashed corner ticks
The values of the shift between NAD 27 and NAD 83 intersections are
obtainable from National Geodetic Survey NADCON software
Non-National Forest System lands within the National Forest
Inholdings may exist in other National or State reservations
This map is not a legal land line or ownership document. Public lands are
subject to change and leasing, and may have access restrictions; check
with local offices. Obtain permission before entering private lands
Unsurveyed land net is not official



1	2	3
4	5	6
7	8	9

HIGHWAYS AND ROADS	
Interstate	5
U. S.	101
State	79
County	6
National Forest, suitable for passenger cars	105
National Forest, suitable for high clearance vehicles	106
National Forest Trail	384
Primary highway	5
Secondary highway	101
Light-duty road	79
Composition unspecified	6
Paved	105
Gravel	106
Dirt	384
Unimproved; 4 wheel drive	4WD
Trail	105
Gate; Barrier	106

ANCHORAGE A-6, AK
1994

RECEIVED
OCT 3 1 1998
USGS NMD
HISTORICAL MAP ARCHIVES

