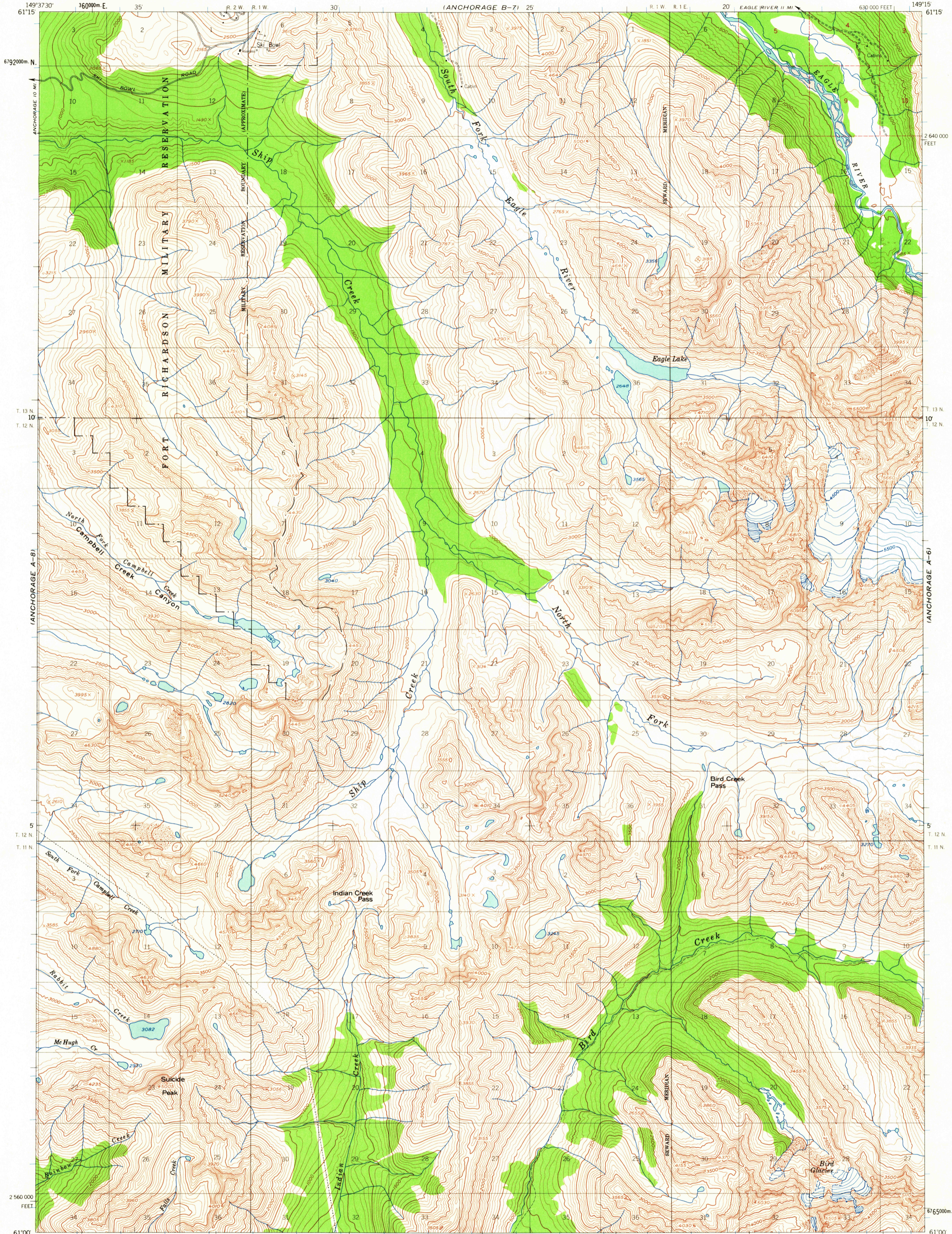
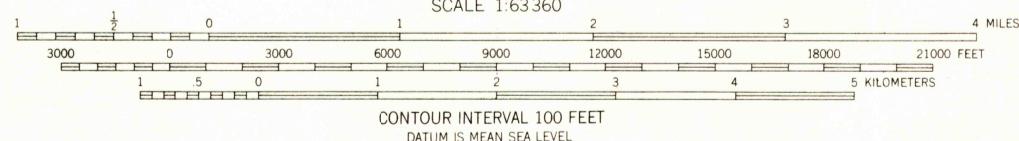
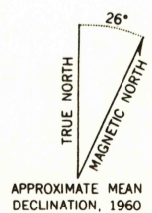


UNITED STATES  
DEPARTMENT OF THE INTERIOR  
GEOLOGICAL SURVEY

ANCHORAGE (A-7) QUADRANGLE  
ALASKA  
1:63 360 SERIES (TOPOGRAPHIC)



Mapped, edited, and published by the Geological Survey  
Control by USGS and USCE  
Topography by photogrammetric methods from aerial photographs  
taken 1957, field annotated 1960. Map not field checked  
Universal Transverse Mercator projection, 1927 North American datum  
10,000 foot grid based on Alaska coordinate system, zone 4  
1000 meter Universal Transverse Mercator grid ticks,  
zone 6, shown in blue  
Land lines printed in gray represent unsurveyed and unmarked  
locations predetermined by the Bureau of Land Management  
Folios S 13 and S 14, Seward Meridian



ROAD CLASSIFICATION  
Light-duty ..... Unimproved dirt .....

ANCHORAGE (A-7), ALASKA  
N6100-W14915/15X22.5

1960  
MINOR REVISIONS 1963

USGS  
Historical File  
Topographic Division

JUL 17 1964

6200  
HISTORICAL

U.S.G.S.  
FILE COPY  
TOPOGRAPHIC DIVISION