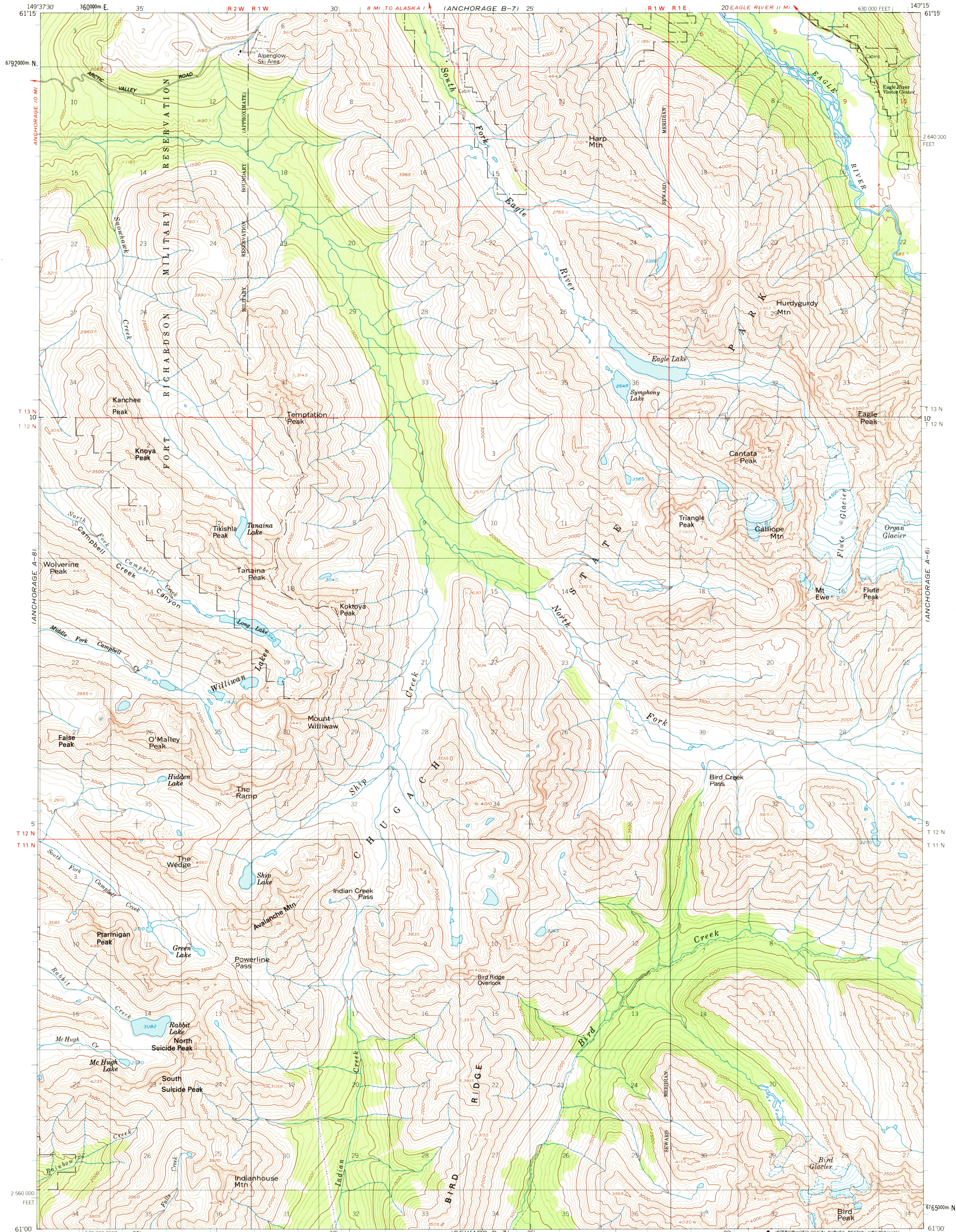
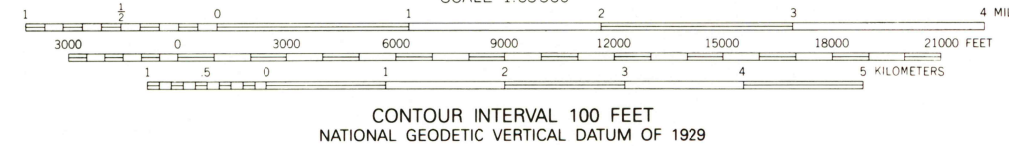
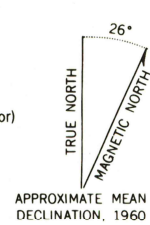


UNITED STATES
DEPARTMENT OF THE INTERIOR
GEOLOGICAL SURVEY

ANCHORAGE (A-7) QUADRANGLE
ALASKA-GREATER ANCHORAGE AREA BOROUGH
1:63 360 SERIES (TOPOGRAPHIC)



Produced by the United States Geological Survey
Control by USGS and USCE
Compiled from aerial photographs taken 1957,
field annotated 1960. Map not field checked
North American Datum of 1927 (NAD 27). Projection and
10,000-foot grid ticks: Alaska coordinate system, zone 4 (transverse Mercator)
1000-meter Universal Transverse Mercator grid ticks, zone 6,
shown in blue
The difference between 1927 North American Datum and North
American Datum of 1983 (NAD 83) for 7.5 minute intersections
is given in USGS Bulletin 1875
Gray land lines represent unsurveyed and unmarked locations
predetermined by the Bureau of Land Management
Folios S-13 and S-14, Seward Meridian
Federal reservation boundaries established by the Alaska National
Interest Lands Conservation Act, PL 96-487, Dec. 2, 1980, are
shown as compiled by the administering agencies
There may be private inholdings within the boundaries of
the National or State reservations shown on this map



ROAD CLASSIFICATION
Medium duty ——— Light duty ———
Unimproved dirt ———

FOR SALE BY U.S. GEOLOGICAL SURVEY
FAIRBANKS, ALASKA 99701, DENVER, COLORADO 80225, OR RESTON, VIRGINIA 22092
A FOLDER DESCRIBING TOPOGRAPHIC MAPS AND SYMBOLS IS AVAILABLE ON REQUEST

ANCHORAGE (A-7), ALASKA
61149-A3-TF-063

1960
MINOR REVISION 1974

