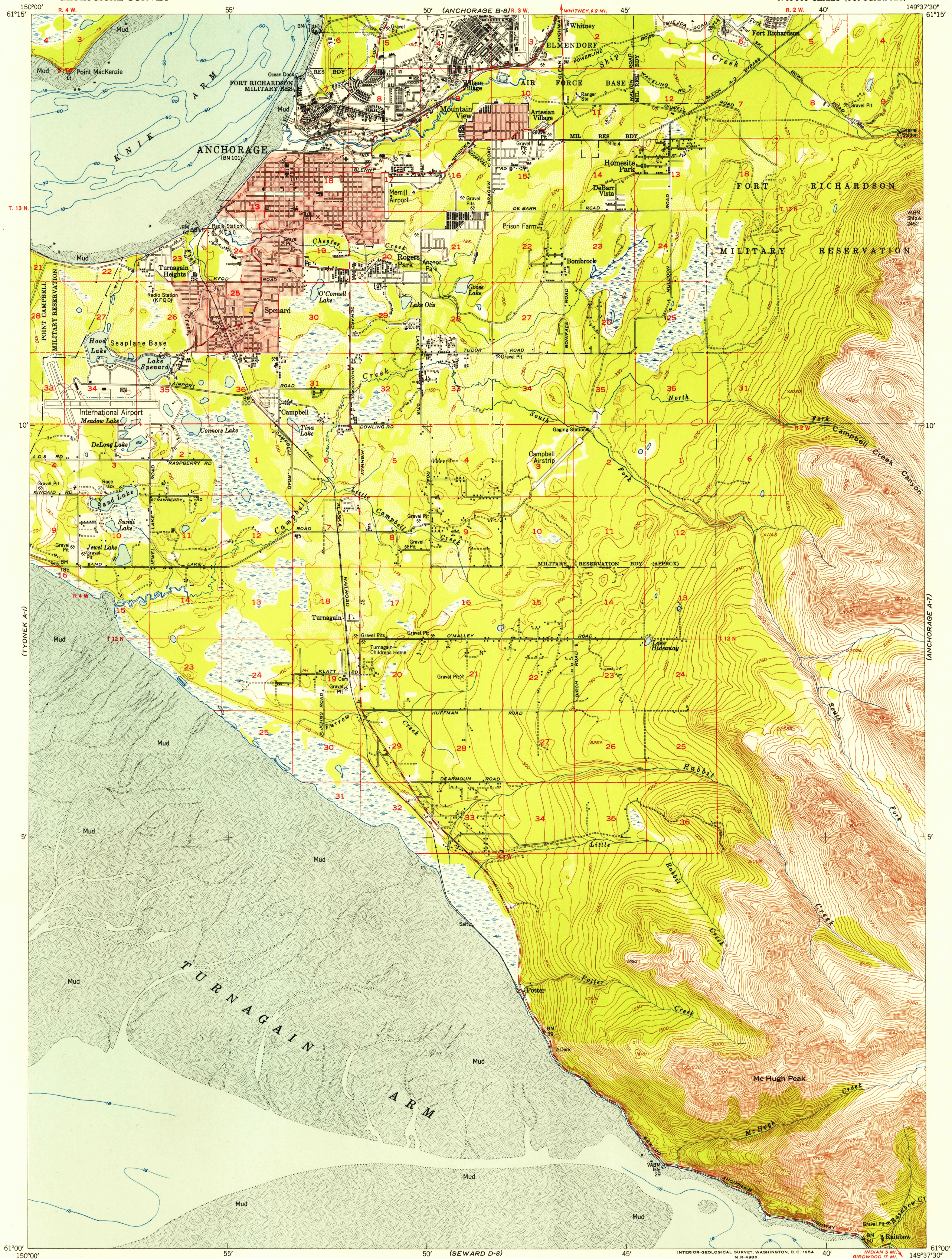


UNITED STATES  
DEPARTMENT OF THE INTERIOR  
GEOLOGICAL SURVEY

U.S.G.S.  
FILE COPY  
TOPOGRAPHIC DIVISION

ANCHORAGE A-8 QUADRANGLE  
ALASKA—THIRD JUDICIAL DIVISION  
1:63 360 SERIES (TOPOGRAPHIC)

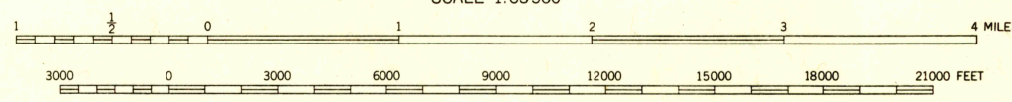
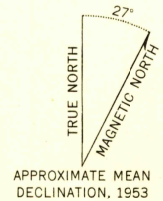
(ANCHORAGE B-7)



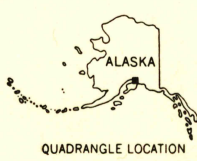
(ANCHORAGE A-7)

(SEWARD D-7)

Mapped, edited, and published by the Geological Survey  
Control by USC&GS and USCE  
Hydrography compiled from USC&GS charts 8557  
and 8553 (1:194,154 scale)  
Topography from aerial photographs by multiplex methods 1953  
Aerial photographs taken 1950  
Universal Transverse Mercator projection, zone 6  
1927 North American datum  
Red tint indicates area in which only landmark buildings  
are shown  
Dashed land lines indicate approximate locations  
Unchecked elevations are shown in brown and blue



CONTOUR INTERVAL 50 FEET  
DOTTED LINES REPRESENT HALF-INTERVAL CONTOURS  
DATUM IS MEAN SEA LEVEL  
DEPTH CURVES IN FEET—DATUM IS MEAN LOWER LOW WATER  
SHORELINE SHOWN REPRESENTS THE APPROXIMATE LINE OF MEAN HIGH WATER  
THE AVERAGE RANGE OF TIDE IS APPROXIMATELY 27 FEET



ROAD CLASSIFICATION  
ALL WEATHER ROADS DRY WEATHER ROADS  
Hard-surface Improved dirt  
Other None Unimproved dirt  
Trails

ANCHORAGE (A-8), ALASKA  
N6100-W14937.5/15X22.5

U.S.G.S.  
FILE COPY  
TOPOGRAPHIC DIVISION

HISTORICAL

NOV 12 1954

2125