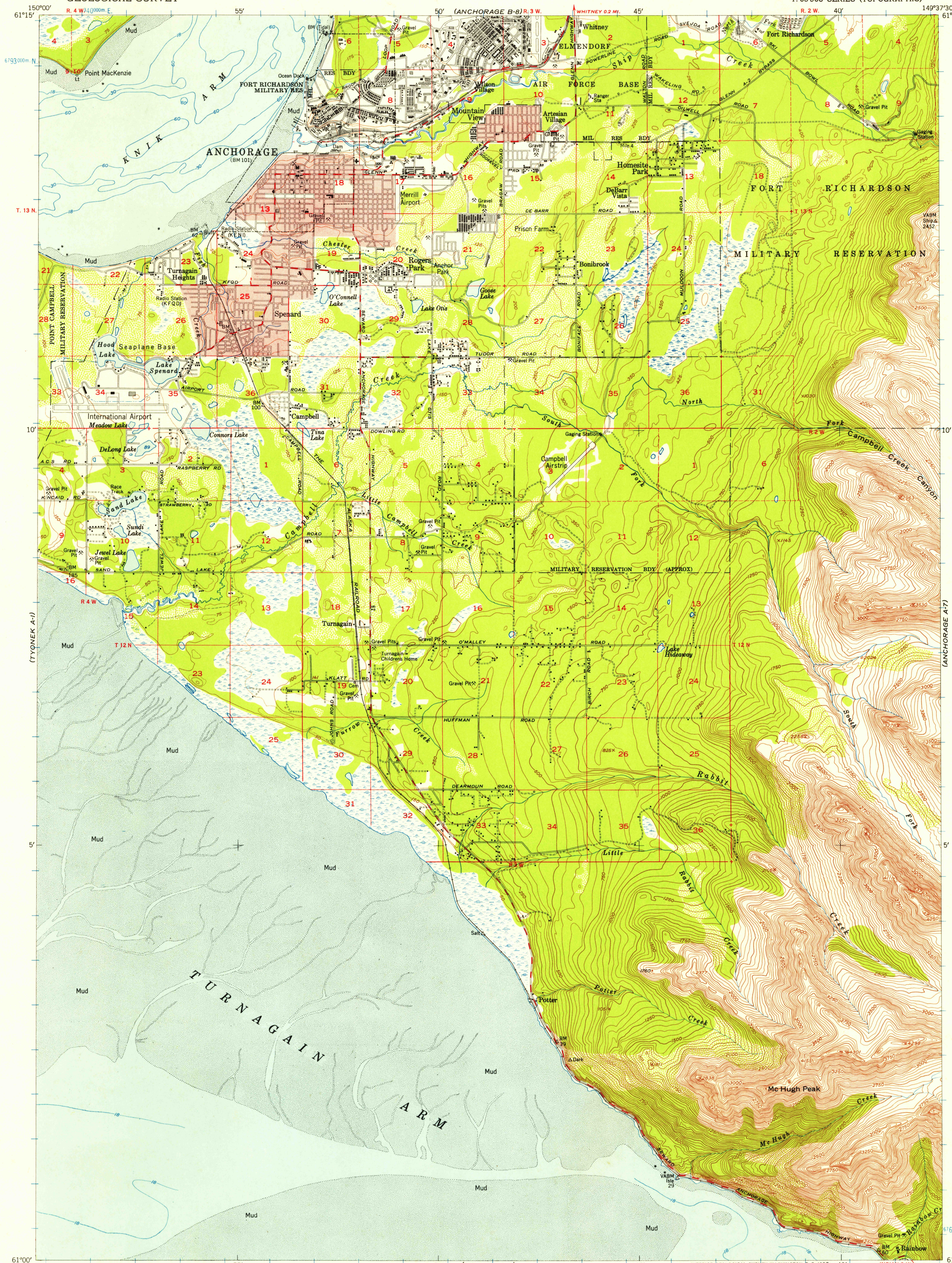


UNITED STATES
DEPARTMENT OF THE INTERIOR
GEOLOGICAL SURVEY

ANCHORAGE A-8 QUADRANGLE
ALASKA—THIRD JUDICIAL DIVISION
1:63 360 SERIES (TOPOGRAPHIC)

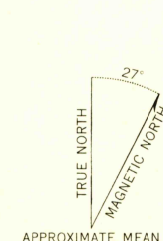
(ANCHORAGE B-7)



U.S.G.S.
FILE COPY
TOPOGRAPHIC DIVISION
HISTORICAL

USGS
Historical File
Topographic Division

Maped, edited, and published by the Geological Survey
Control by USC&GS and USCE
Hydrography compiled from USC&GS charts 8557
and 8553 (1:194,154 scale)
Topography from aerial photographs by multiplex methods 1953
Aerial photographs taken 1950
Universal Transverse Mercator projection, zone 6
1927 North American datum
Red tint indicates area in which only landmark buildings
are shown
Dashed land-lines indicate approximate locations
Unchecked elevations are shown in brown and blue
1000-meter Universal Transverse Mercator grid ticks,
zone 6, shown in blue



SCALE 1:63 360

3000 0 3000 6000 9000 12000 15000 18000 21000 FEET

1 5 0 1 2 3 4 5 KILOMETERS

CONTOUR INTERVAL 50 FEET

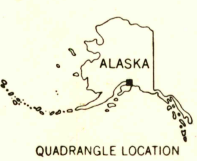
DOTTED LINES REPRESENT HALF-INTERVAL CONTOURS

DATUM IS MEAN SEA LEVEL

DEPTH CURVES IN FEET—DATUM IS MEAN LOWER LOW WATER

SHORELINE SHOWN REPRESENTS THE APPROXIMATE LINE OF MEAN HIGH WATER

THE AVERAGE RANGE OF TIDE IS APPROXIMATELY 27 FEET



ROAD CLASSIFICATION
ALL WEATHER ROADS DRY WEATHER ROADS
Hard-surface Improved dirt
Other None Unimproved dirt
Trails

ANCHORAGE (A-8), ALASKA

N6100-W14937.5/15X22.5

1953

FOR SALE BY U. S. GEOLOGICAL SURVEY, FEDERAL CENTER, DENVER, COLORADO OR WASHINGTON 25, D. C.

A FOLDER DESCRIBING TOPOGRAPHIC MAPS AND SYMBOLS IS AVAILABLE ON REQUEST

JAN 21 1958

4860