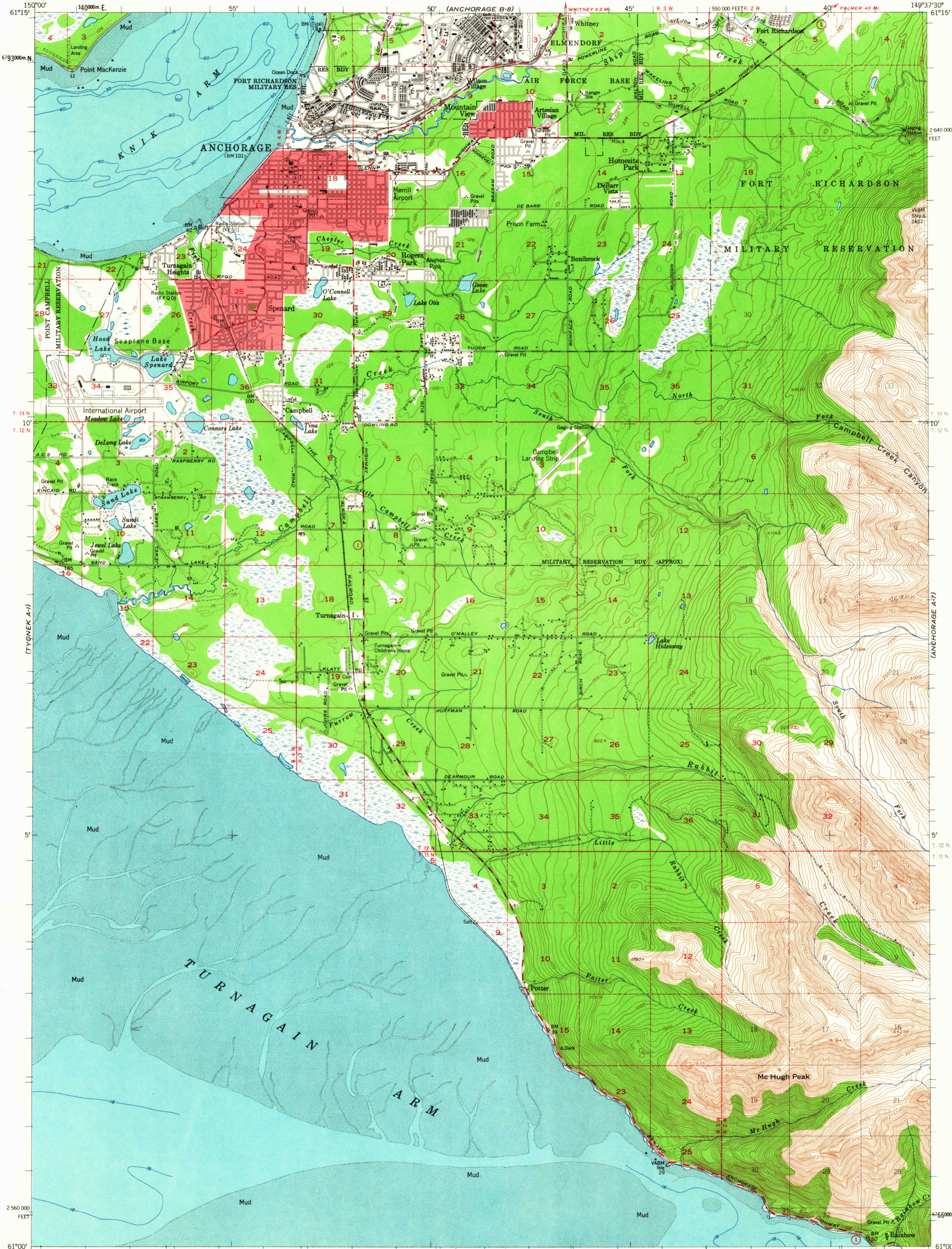
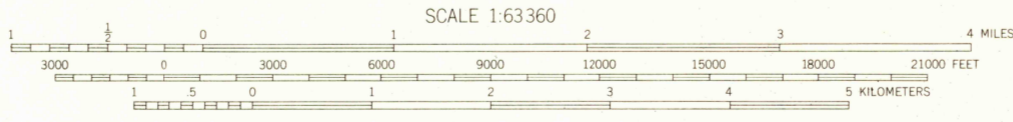
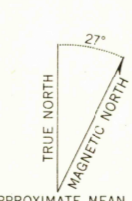


UNITED STATES  
DEPARTMENT OF THE INTERIOR  
GEOLOGICAL SURVEY

ANCHORAGE A-8 QUADRANGLE  
ALASKA  
1:63 360 SERIES (TOPOGRAPHIC)



Mapped, edited, and published by the Geological Survey  
Control by USC&GS and USCE  
Topography by photogrammetric methods from aerial photographs  
taken 1950. Field check 1952  
Selected hydrographic data compiled from USC&GS Charts 8557  
and 8553 (1:194,154 scale). This information is not intended  
for navigational purposes  
Universal Transverse Mercator projection, 1927 North American datum  
10,000-foot grid based on Alaska coordinate system, zone 4  
1000-meter Universal Transverse Mercator grid ticks,  
zone 6, shown in blue  
Red tint indicates areas in which only landmark buildings are shown  
Land lines printed in gray represent unsurveyed and  
unmarked locations predetermined by the Bureau of  
Land Management. Folio S-13, Seward Meridian  
Swamps, as portrayed, indicate only the wetter areas,  
usually of low relief, as interpreted from aerial photographs



CONTOUR INTERVAL 50 FEET  
DOTTED LINES REPRESENT 25-FOOT CONTOURS  
DATUM IS MEAN SEA LEVEL  
DEPTH CURVES IN FEET-DATUM IS MEAN LOWER LOW WATER  
SHORELINE SHOWN REPRESENTS THE APPROXIMATE LINE OF MEAN HIGH WATER  
THE AVERAGE RANGE OF TIDE IS APPROXIMATELY 27 FEET  
FOR SALE BY U. S. GEOLOGICAL SURVEY  
FAIRBANKS, ALASKA DENVER 25, COLORADO WASHINGTON 25, D. C.  
A FOLDER DESCRIBING TOPOGRAPHIC MAPS AND SYMBOLS IS AVAILABLE ON REQUEST



ROAD CLASSIFICATION  
Medium-duty ——— Light-duty ———  
Unimproved dirt ———  
State Route ———

ANCHORAGE (A-8), ALASKA  
N6100-W14937.5/15X22.5  
1952  
MINOR REVISIONS 1963

USGS  
Historical File  
Topographic Division  
SEP 23 1963

HISTORICAL