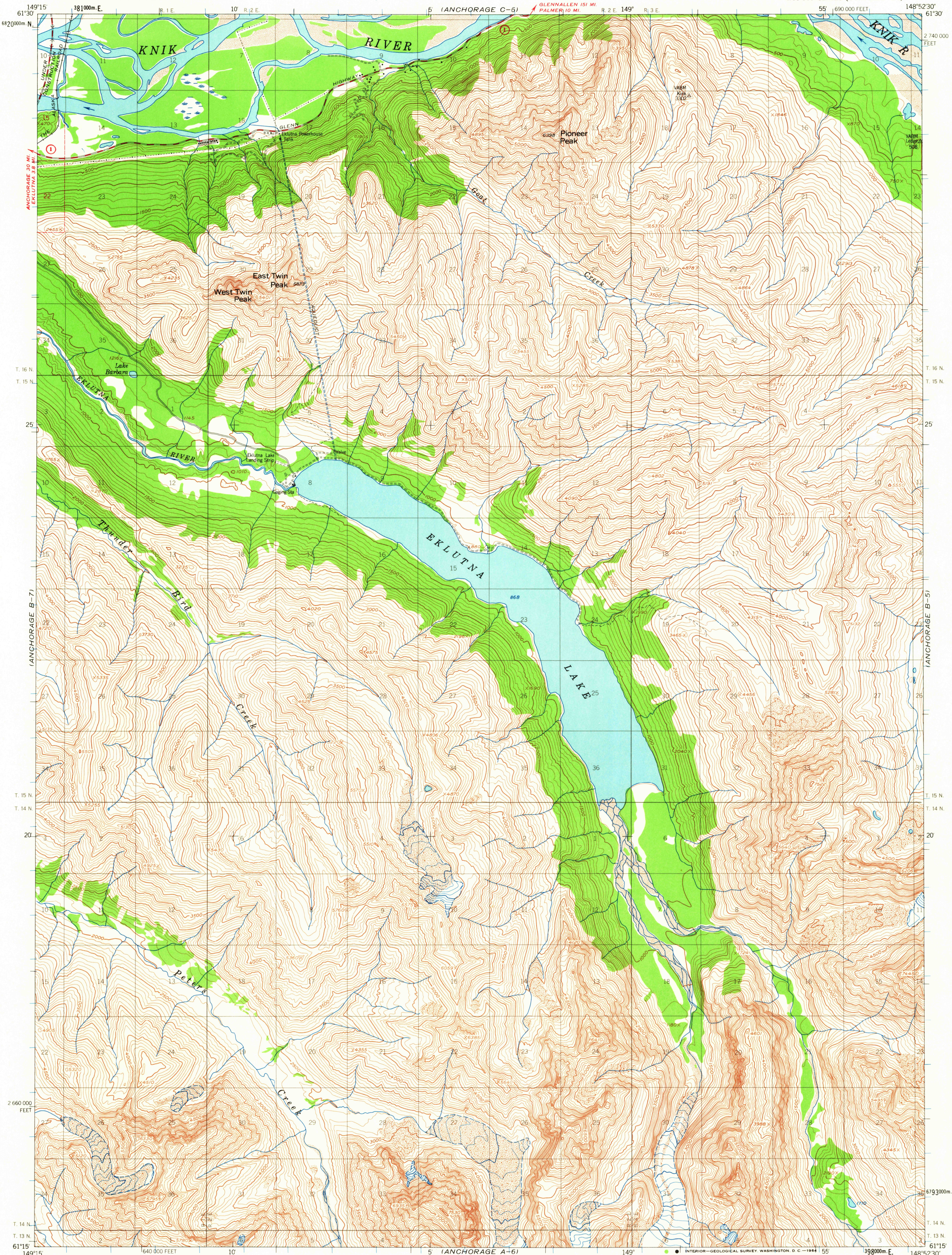
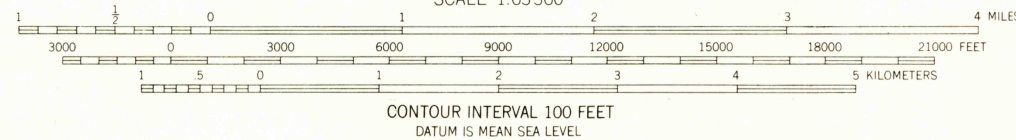
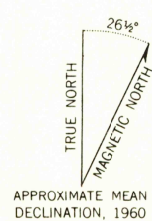


UNITED STATES
DEPARTMENT OF THE INTERIOR
GEOLOGICAL SURVEY

ANCHORAGE (B-6) QUADRANGLE
ALASKA
1:63 360 SERIES (TOPOGRAPHIC)



Mapped, edited, and published by the Geological Survey
Control by USGS, USC&GS and USCE
Topography by photogrammetric methods from aerial photographs
taken 1957, field annotated 1960. Map not field checked
Universal Transverse Mercator projection, 1927 North American datum
10,000-foot grid based on Alaska coordinate system, zone 4
1000-meter Universal Transverse Mercator grid ticks,
zone 6, shown in blue
Land lines printed in gray represent unsurveyed and
unmarked locations predetermined by the Bureau of
Land Management. Folio S-14 Seward Meridian
Swamps, as portrayed, indicate only the wetter areas,
usually of low relief, as interpreted from aerial photographs



ROAD CLASSIFICATION
Medium-duty ——— Light-duty ———
Unimproved dirt =====
State Route (O) ———

ANCHORAGE (B-6), ALASKA
N6115-W14852.5/15X22.5
1960
MINOR REVISIONS 1964

USGS
Historical File
Topographic Division

5720

JUL 14 1964
HISTORICAL