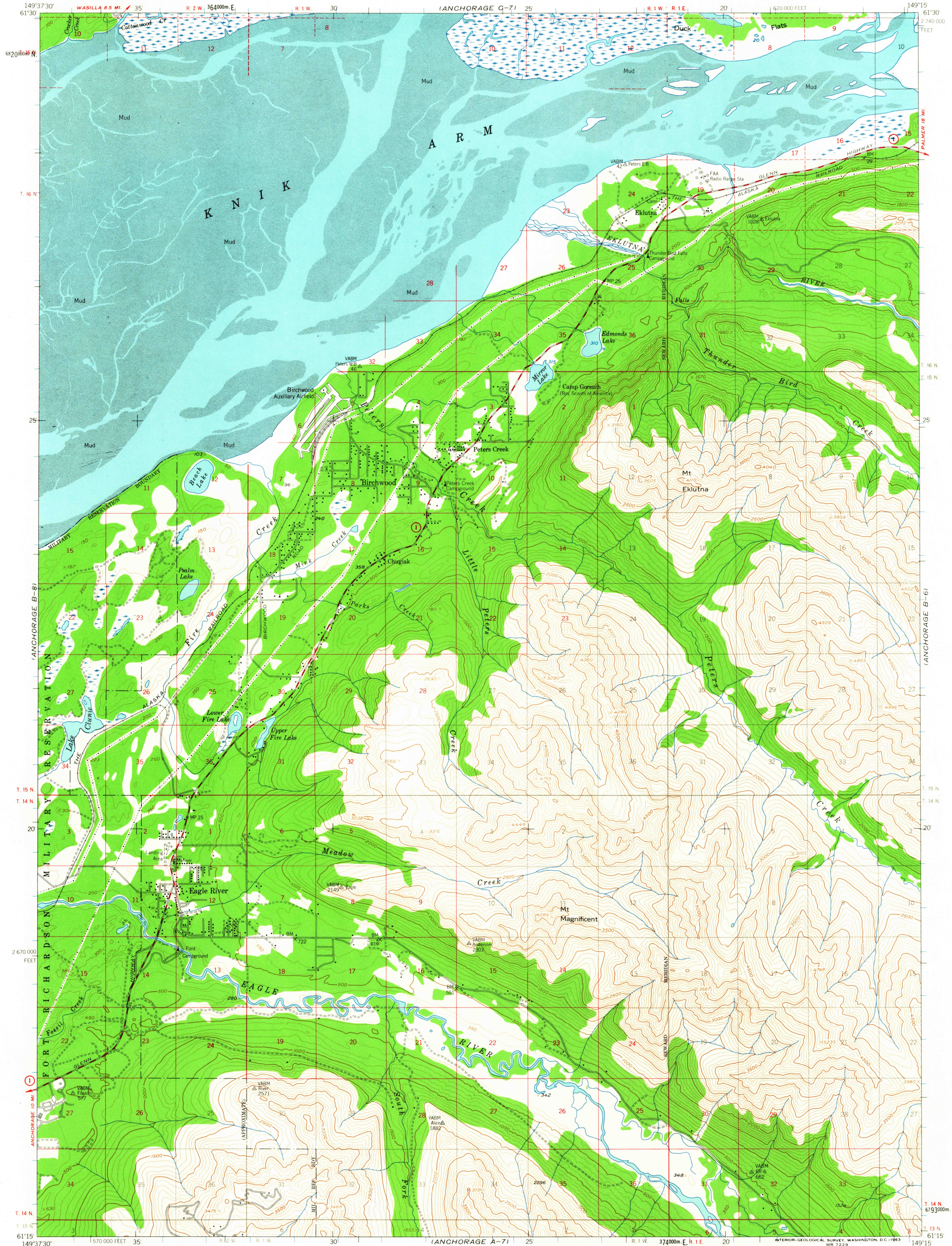


UNITED STATES
DEPARTMENT OF THE INTERIOR
GEOLOGICAL SURVEY

ANCHORAGE (B-7) QUADRANGLE
ALASKA
1:63 360 SERIES (TOPOGRAPHIC)



Mapped, edited, and published by the Geological Survey

Control by USC&GS and USCE

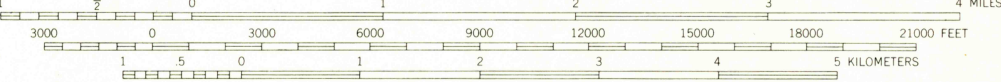
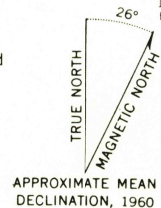
Topography by photogrammetric methods from aerial photographs taken 1950, 1953 and 1957, field annotated 1960. Map not field checked

Selected hydrographic data compiled from USC&GS Chart 8553 (1:194 154 scale, 1960). This information is not intended for navigational purposes

Universal Transverse Mercator projection, 1927 North American datum 10 000 foot grid based on Alaska coordinate system, zone 4 1000 meter Universal Transverse Mercator grid ticks, zone 6, shown in blue

Land lines printed in gray represent unsurveyed and unmarked locations predetermined by the Bureau of Land Management. Folios S-13 and S-14, Seward Meridian

Swamps, as portrayed, indicate only the wetter areas, usually of low relief, as interpreted from aerial photographs



CONTOUR INTERVAL 100 FEET
DOTTED LINES REPRESENT 50 FOOT CONTOURS
DATUM IS MEAN SEA LEVEL
SHORELINE SHOWN REPRESENTS THE APPROXIMATE LINE OF MEAN HIGH WATER

FOR SALE BY U.S. GEOLOGICAL SURVEY
FAIRBANKS, ALASKA DENVER 25, COLORADO WASHINGTON 25, D.C.
A FOLDER DESCRIBING TOPOGRAPHIC MAPS AND SYMBOLS IS AVAILABLE ON REQUEST



ROAD CLASSIFICATION
Medium duty ——— Light-duty ———
Unimproved dirt ———
State Route ———

ANCHORAGE (B-7), ALASKA
N6115-W14915/15X22.5

1960
MINOR REVISIONS 1962

HISTORICAL

AUG 14 1963

USGS
Historical File
Topographic Division

6270