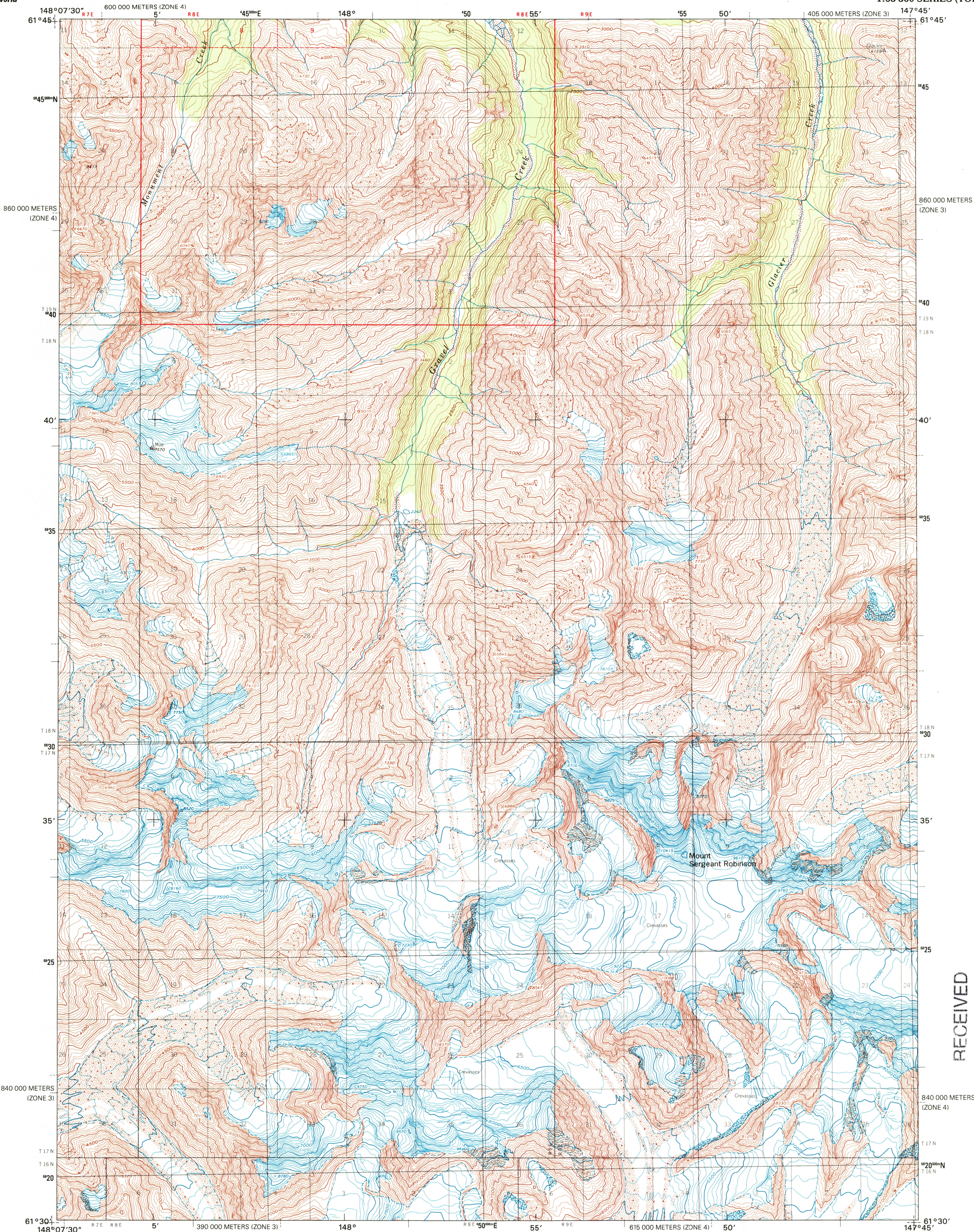


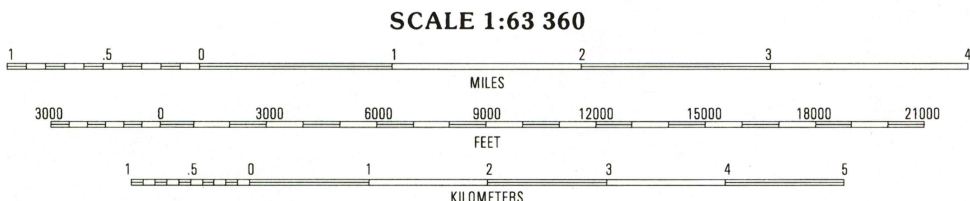
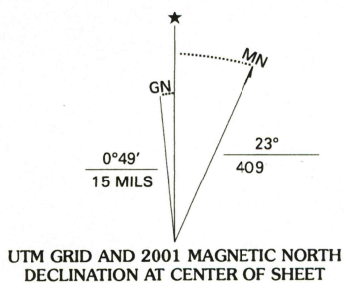


U.S. DEPARTMENT OF THE INTERIOR
U.S. GEOLOGICAL SURVEY

ANCHORAGE C-3 QUADRANGLE
ALASKA-MATANUSKA-SUSITNA BOROUGH
1:63 360 SERIES (TOPOGRAPHIC)



Produced by the United States Geological Survey
Topography compiled 1957. Planimetry derived from imagery taken 1993. Public Land Survey System current as of 1960. North half current as of 1999. Survey control current as of 1960. Boundaries current as of 1999. This map has not been field checked.
North American Datum of 1983 (NAD 83). Projection and 5 000-meter grid: Universal Transverse Mercator, zone 6. 5 000-meter ticks: Alaska Coordinate System of 1983 (zone 3). North American Datum of 1927 (NAD 27) is shown by dashed corner ticks. The values of the shift between NAD 83 and NAD 27 are obtainable from National Geodetic Survey NADCON software.
Protracted land lines are predetermined by the Bureau of Land Management, Folio-10, Fairbanks Meridian.



CONTOUR INTERVAL 100 FEET
NATIONAL GEODETIC VERTICAL DATUM OF 1929
TO CONVERT FROM FEET TO METERS, MULTIPLY BY 0.3048



ROAD CLASSIFICATION

Primary highway	Unimproved road
hard surface	
Secondary highway	4 wheel drive
hard surface	
Light-duty road, hard or improved surface	Trails
	State Route

1	2	3	1 Anchorage D-4
			2 Anchorage D-3
			3 Anchorage D-2
			4 Anchorage C-4
4		5	5 Anchorage C-2
			6 Anchorage B-4
			7 Anchorage B-3
6	7	8	8 Anchorage B-2

ADJOINING QUADRANGLES

ANCHORAGE C-3, AK
1993

RECEIVED
DEC 31 2001
USGS NWL
TOPOGRAPHICAL MAP ARCHIVES



FOR SALE BY U.S. GEOLOGICAL SURVEY, P.O. BOX 25286, DENVER, COLORADO 80225
A FOLDER DESCRIBING TOPOGRAPHIC MAPS AND SYMBOLS IS AVAILABLE ON REQUEST