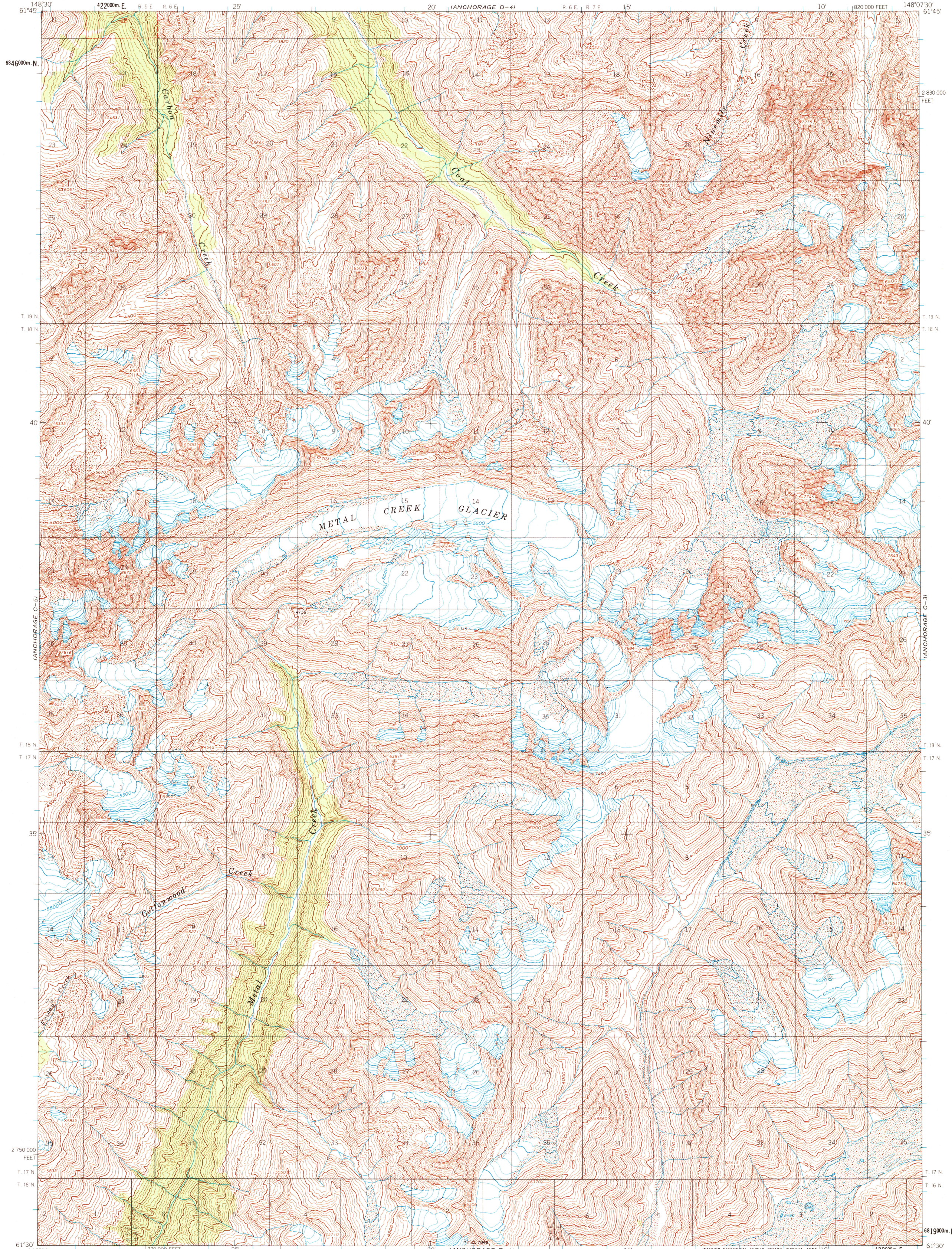
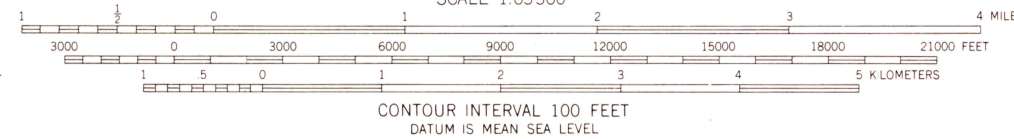
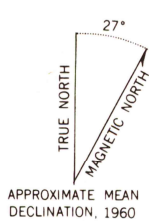


UNITED STATES
DEPARTMENT OF THE INTERIOR
GEOLOGICAL SURVEY

ANCHORAGE (C-4) QUADRANGLE
ALASKA
1:63 360 SERIES (TOPOGRAPHIC)



Maped, edited, and published by the Geological Survey
Control by USGS
Topography by photogrammetric methods from aerial photographs
taken 1950 and 1957, field annotated 1960. Map not field checked
Universal Transverse Mercator projection, 1927 North American datum
10,000 foot grid based on Alaska coordinate system, zone 4
1000-meter Universal Transverse Mercator grid ticks,
zone 6, shown in blue
Gray land lines represent unsurveyed and unmarked locations
predetermined by the Bureau of Land Management
Folios S-1 and S-14, Seward Meridian



ANCHORAGE (C-4), ALASKA
N6130-W14807 5/15X22.5
1960

FOR SALE BY U.S. GEOLOGICAL SURVEY
ANCHORAGE, ALASKA 99508, DENVER, COLORADO 80225, OR RESTON, VIRGINIA 22092
A FOLDER DESCRIBING TOPOGRAPHIC MAPS AND SYMBOLS IS AVAILABLE ON REQUEST

