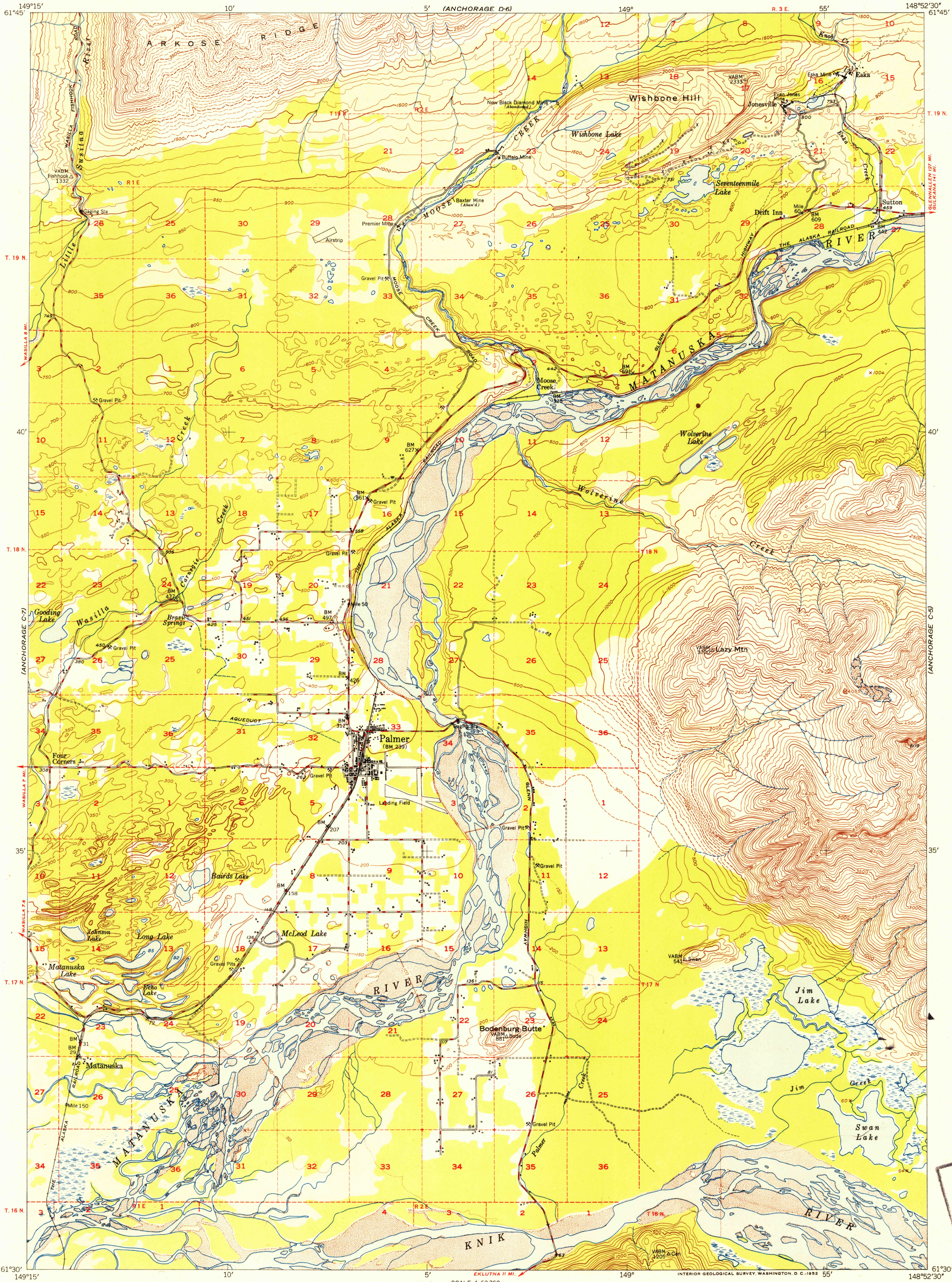


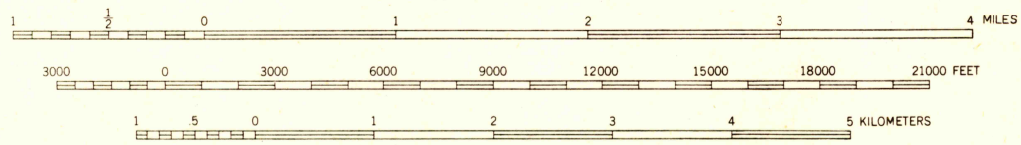
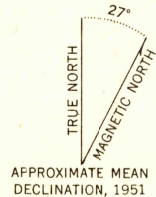
UNITED STATES
DEPARTMENT OF THE INTERIOR
GEOLOGICAL SURVEY

U. S. G. S.
FILE COPY
Inspection and Mapping

ANCHORAGE (C-6) QUADRANGLE
ALASKA-THIRD JUDICIAL DIVISION
1:63 360 SERIES (TOPOGRAPHIC)



Mapped, edited, and published by the Geological Survey
Control by USGS, USC&GS, and USCE
Topography from aerial photographs by multiplex and
Kelsh Plotter methods. Aerial photographs taken 1949
Universal Transverse Mercator projection, zone 6
1927 North American datum
Dashed land lines indicate approximate location
Unchecked elevations shown in brown and blue



CONTOUR INTERVALS 50 AND 100 FEET
DOTTED LINES REPRESENT HALF-INTERVAL CONTOURS
AREAS NOT SURVEYED IN DETAIL INDICATED BY BROWN LINES
DATUM IS MEAN SEA LEVEL

ROAD CLASSIFICATION
ALL WEATHER ROADS DRY WEATHER ROADS
Hard-surface Improved dirt
Other Unimproved dirt
Trails

ANCHORAGE (C-6), ALASKA
N6130W14852.5/15X22.5

1951

FOR SALE BY U. S. GEOLOGICAL SURVEY, FEDERAL CENTER, DENVER, COLORADO OR WASHINGTON 25, D. C.
A FOLDER DESCRIBING TOPOGRAPHIC MAPS AND SYMBOLS IS AVAILABLE ON REQUEST

U. S. G. S.
FILE COPY
Inspection and Mapping

USGS
Historical File
Topographic Division

HISTORICAL

JUL 18 1952 2120