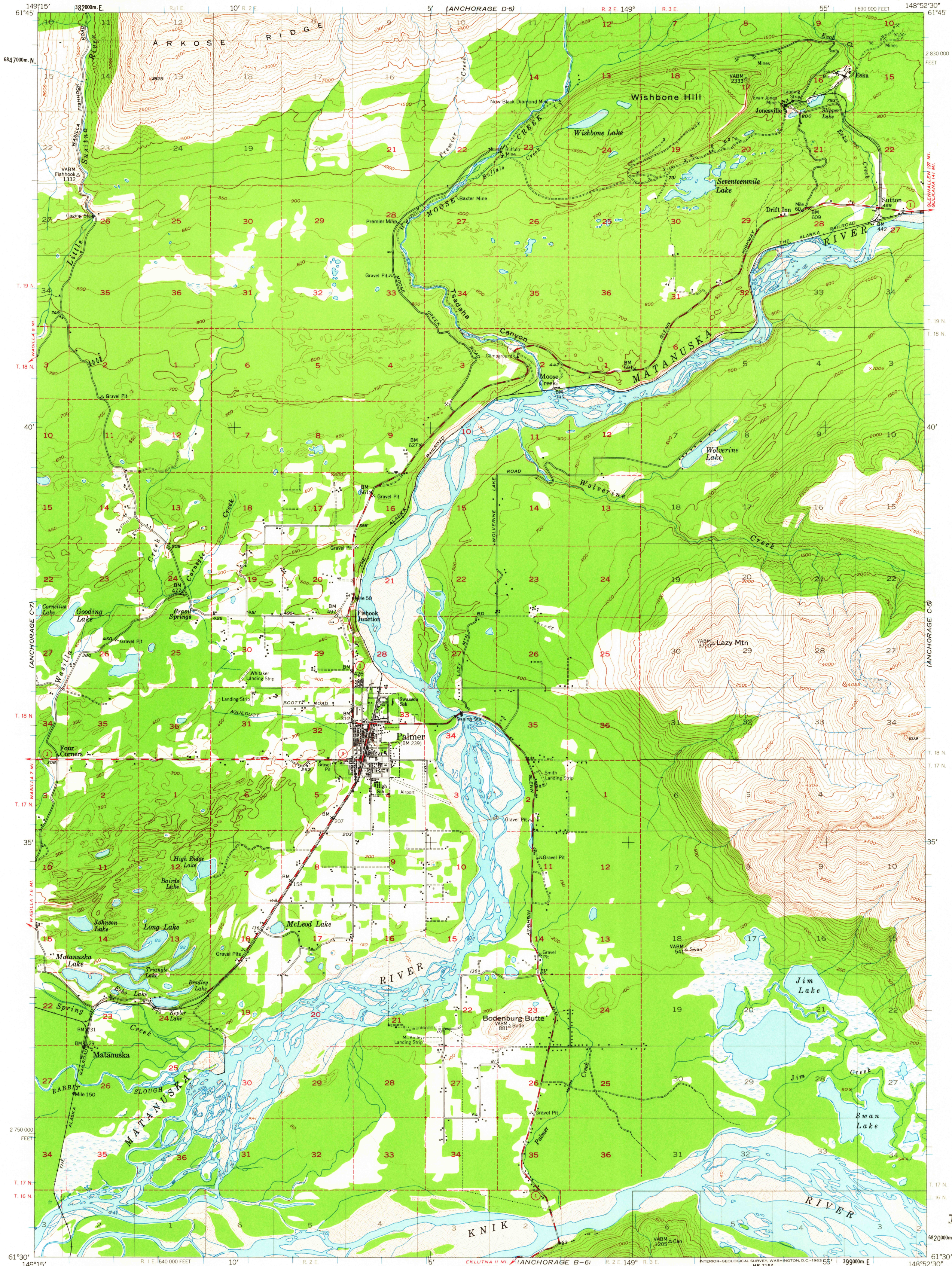


UNITED STATES
DEPARTMENT OF THE INTERIOR
GEOLOGICAL SURVEY

ANCHORAGE (C-6) QUADRANGLE
ALASKA
1:63 360 SERIES (TOPOGRAPHIC)

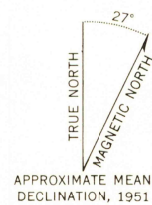


Mapped, edited, and published by the Geological Survey
Control by USGS, USC&GS and USCE

Topography by photogrammetric methods from aerial photographs
taken 1949, field annotated 1951. Map not field checked
Universal Transverse Mercator projection, 1927 North American datum
10,000-foot grid based on Alaska coordinate system, zone 4
1000-meter Universal Transverse Mercator grid ticks,
zone 6, shown in blue

Land lines printed in gray represent unsurveyed and
unmarked locations predetermined by the Bureau of
Land Management. Folios S-1 and S-14, Seward Meridian

Swamps, as portrayed, indicate only the wetter areas,
usually of low relief, as interpreted from aerial photographs



AREAS NOT SURVEYED IN DETAIL INDICATED BY BROKEN LINES
DATUM IS MEAN SEA LEVEL

FOR SALE BY U. S. GEOLOGICAL SURVEY
FAIRBANKS, ALASKA DENVER 25, COLORADO WASHINGTON 25, D. C.
A FOLDER DESCRIBING TOPOGRAPHIC MAPS AND SYMBOLS IS AVAILABLE ON REQUEST

ROAD CLASSIFICATION
Medium-duty ——— Light-duty ———
Unimproved dirt ———
State Route —○—



ANCHORAGE (C-6), ALASKA
N6130-W14852/15X22.5

1951
MINOR REVISIONS 1962

USGS
Historical File
Topographic Division

HISTORICAL

JUN 20 1963

5935