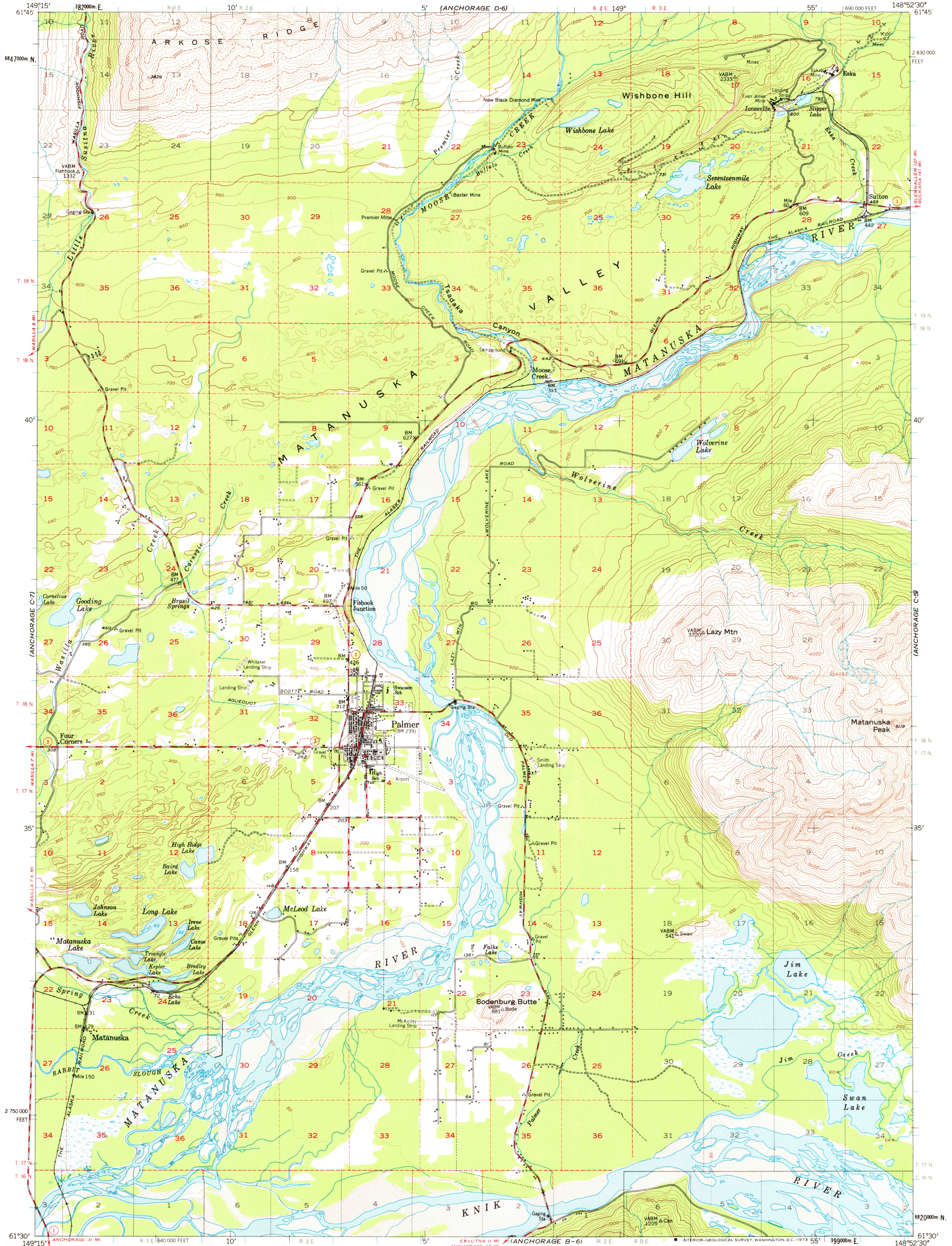


ANCHORAGE D-7

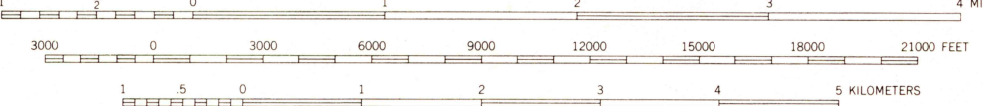
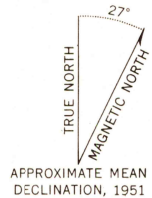
UNITED STATES
DEPARTMENT OF THE INTERIOR
GEOLOGICAL SURVEY

ANCHORAGE (C-6) QUADRANGLE
ALASKA - MATANUSKA-SUSITNA BOROUGH
1:63 360 SERIES (TOPOGRAPHIC)

ANCHORAGE D-8



Maped, edited, and published by the Geological Survey
Control by USGS, USC&GS and USCE
Topography by photogrammetric methods from aerial photographs
taken 1949, field annotated 1951. Map not field checked
Universal Transverse Mercator projection, 1927 North American datum
10,000-foot grid based on Alaska coordinate system, zone 4
1000-meter Universal Transverse Mercator grid ticks,
zone 6, shown in blue
Land lines printed in gray represent unsurveyed and
unmarked locations predetermined by the Bureau of
Land Management. Folios S-1 and S-14, Seward Meridian
Swamps, as portrayed, indicate only the wetter areas,
usually of low relief, as interpreted from aerial photographs



CONTOUR INTERVALS 50 AND 100 FEET
DOTTED LINES REPRESENT 50-FOOT CONTOURS
AREAS NOT SURVEYED IN DETAIL INDICATED BY BROKEN LINES
DATUM IS MEAN SEA LEVEL

ROAD CLASSIFICATION
Medium duty ——— Light duty ———
Unimproved dirt ———
State Route ———



ANCHORAGE (C-6), ALASKA
N6130-W14852.5/15X22.5

1951
MINOR REVISIONS 1972

MAY 4 1980
4600

FOR SALE BY U. S. GEOLOGICAL SURVEY
FAIRBANKS, ALASKA 99701, DENVER, COLORADO 80225, OR WASHINGTON, D. C. 20242
A FOLDER DESCRIBING TOPOGRAPHIC MAPS AND SYMBOLS IS AVAILABLE ON REQUEST

USGS
Historical File
Topographic Division