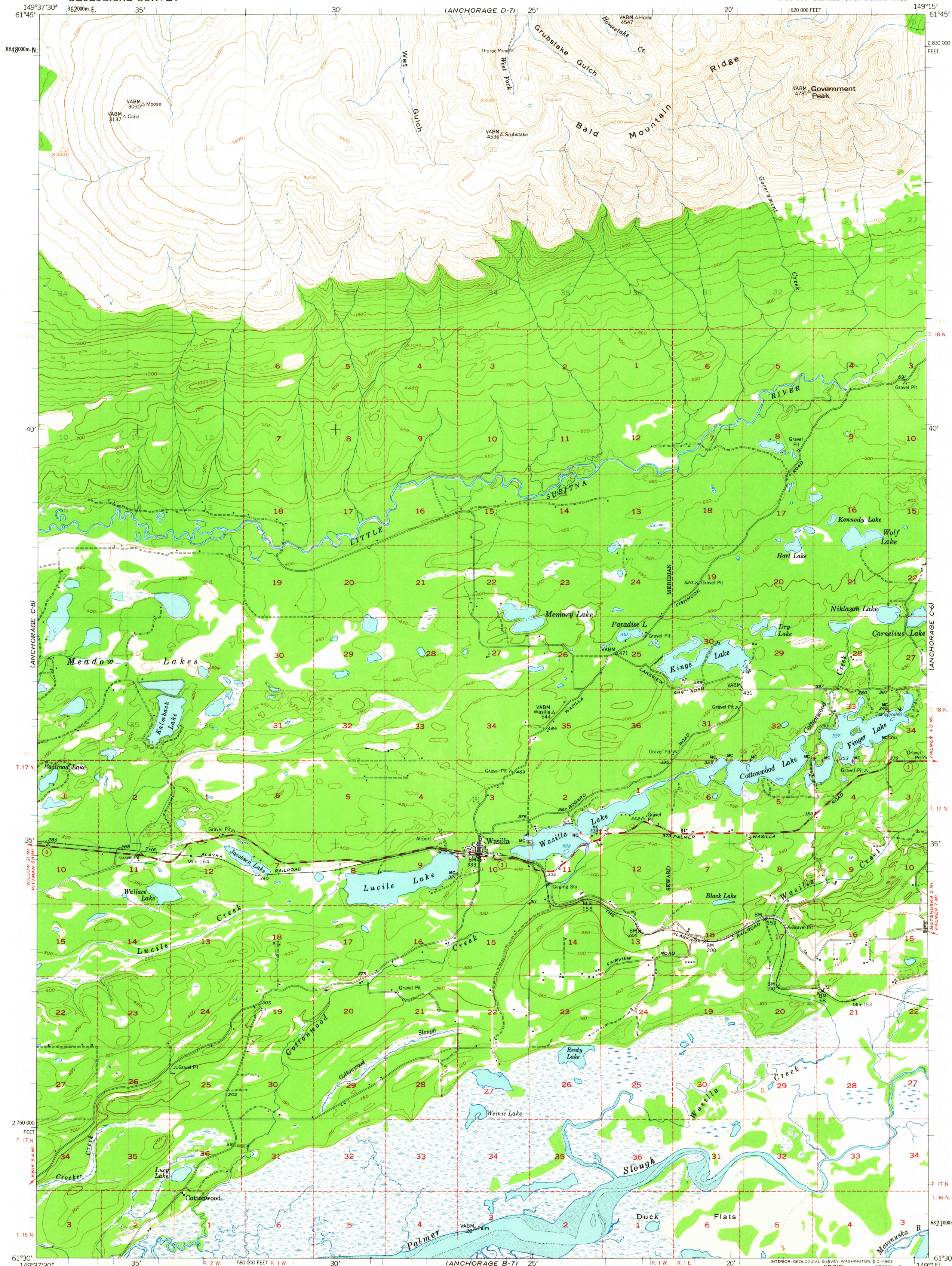
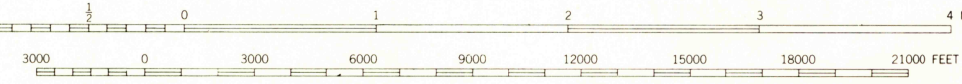
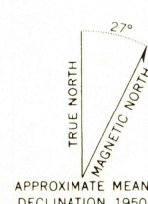


UNITED STATES
DEPARTMENT OF THE INTERIOR
GEOLOGICAL SURVEY

ANCHORAGE (C-7) QUADRANGLE
ALASKA
1:63 360 SERIES (TOPOGRAPHIC)



Maped, edited, and published by the Geological Survey
Control by USGS, USCGS and USCE
Topography by photogrammetric methods from aerial photographs
taken 1949, field annotated 1950. Map not field checked
Universal Transverse Mercator projection, 1927 North American datum
10,000-foot grid based on Alaska coordinate system, zone 4
1000-meter Universal Transverse Mercator grid ticks,
zone 6, shown in blue
Land lines printed in gray represent unsurveyed and unmarked
locations predetermined by the Bureau of Land Management
Folios S-1, S-2, S-13 and S-14, Seward Meridian
Swamps, as portrayed, indicate only the wetter areas,
usually of low relief, as interpreted from aerial photographs



CONTOUR INTERVALS 50 AND 100 FEET
DOTTED LINES REPRESENT 25-FOOT CONTOURS
DATUM IS MEAN SEA LEVEL

ROAD CLASSIFICATION
Medium-duty ——— Light-duty ———
Unimproved dirt ———
State Route ———



ANCHORAGE (C-7), ALASKA
N6130-W14915/15225

1950
MINOR REVISIONS 1962

USGS
Historical File
Topographic Division

AUG 14 1963

6400