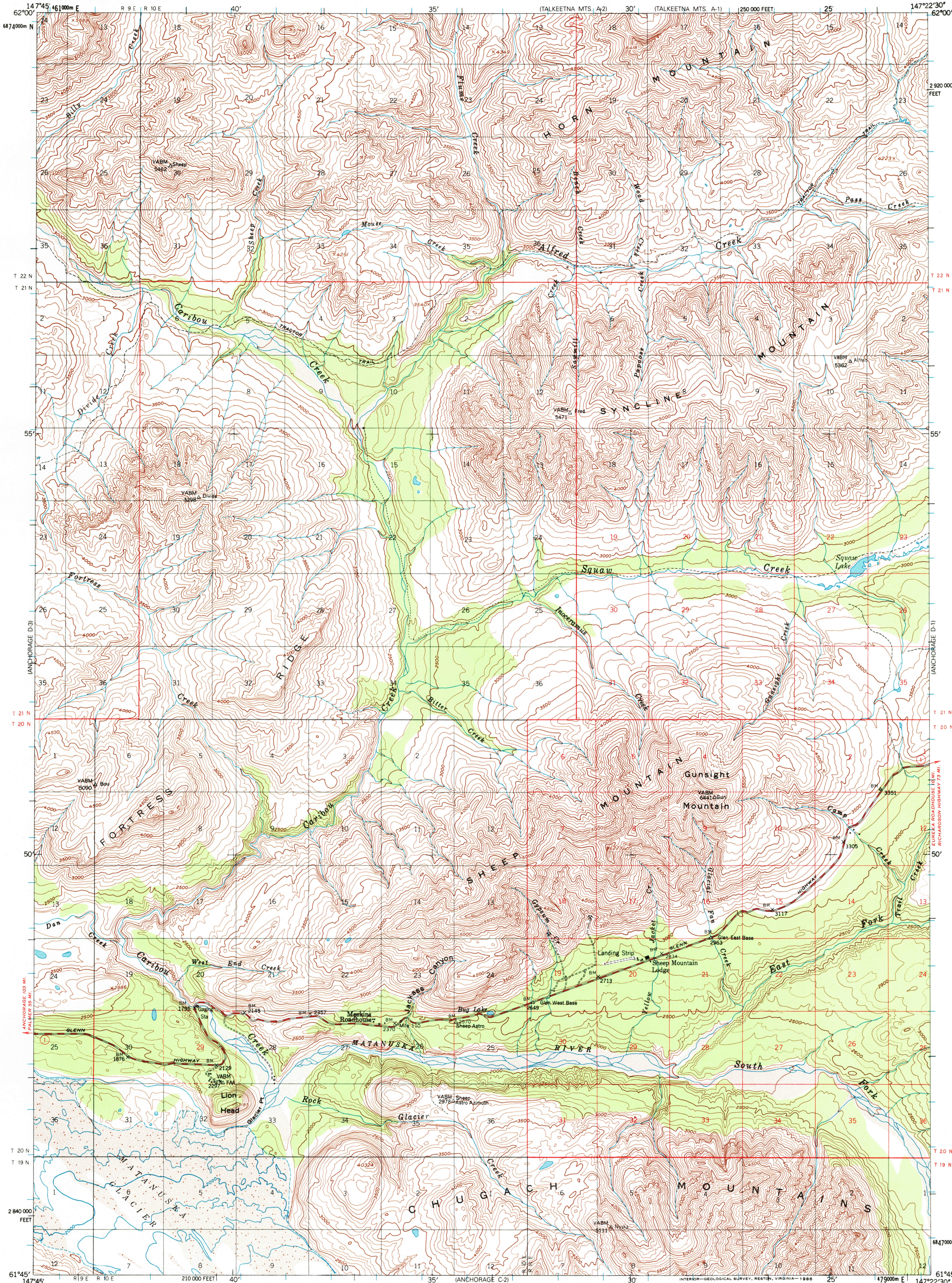


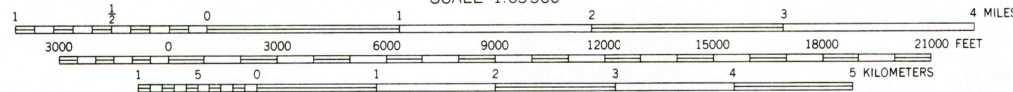
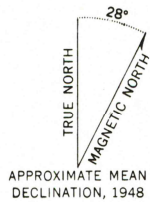


U.S. DEPARTMENT OF THE INTERIOR  
U.S. GEOLOGICAL SURVEY

ANCHORAGE (D-2) QUADRANGLE  
ALASKA-MATANUSKA-SUSITNA BOROUGH  
1:63 360 SERIES (TOPOGRAPHIC)



Maped, edited, and published by the Geological Survey  
Control by USGS and NOS/NOAA  
Topography by photogrammetric methods from aerial photographs  
taken 1948, field annotated 1948. Map not field checked  
Projection and 1000-meter grid ticks shown in blue:  
Universal Transverse Mercator, zone 6  
10,000-foot grid ticks based on Alaska coordinate  
system, zone 3, 1927 North American Datum  
To place on the predicted North American Datum 1983 move  
the projection lines 59 meters north and 115 meters east  
Gray land lines represent unsurveyed and unmarked locations  
predetermined by the Bureau of Land Management  
Folio S-1, Seward Meridian



CONTOUR INTERVAL 100 FEET  
DOTTED LINES REPRESENT 50 FOOT CONTOURS  
NATIONAL GEODETIC VERTICAL DATUM OF 1929



ROAD CLASSIFICATION  
Medium-duty ——— Unimproved dirt ———  
State Route ○

ANCHORAGE (D-2), ALASKA  
61147-64-TF-063

1948  
LIMITED REVISIONS 1976

FOR SALE BY U.S. GEOLOGICAL SURVEY, P.O. BOX 25286, DENVER, COLORADO 80225  
A FOLDER DESCRIBING TOPOGRAPHIC MAPS AND SYMBOLS IS AVAILABLE ON REQUEST

USGS M&D  
HISTORICAL MAP ARCHIVES

JAN 31 1999

RECEIVED

