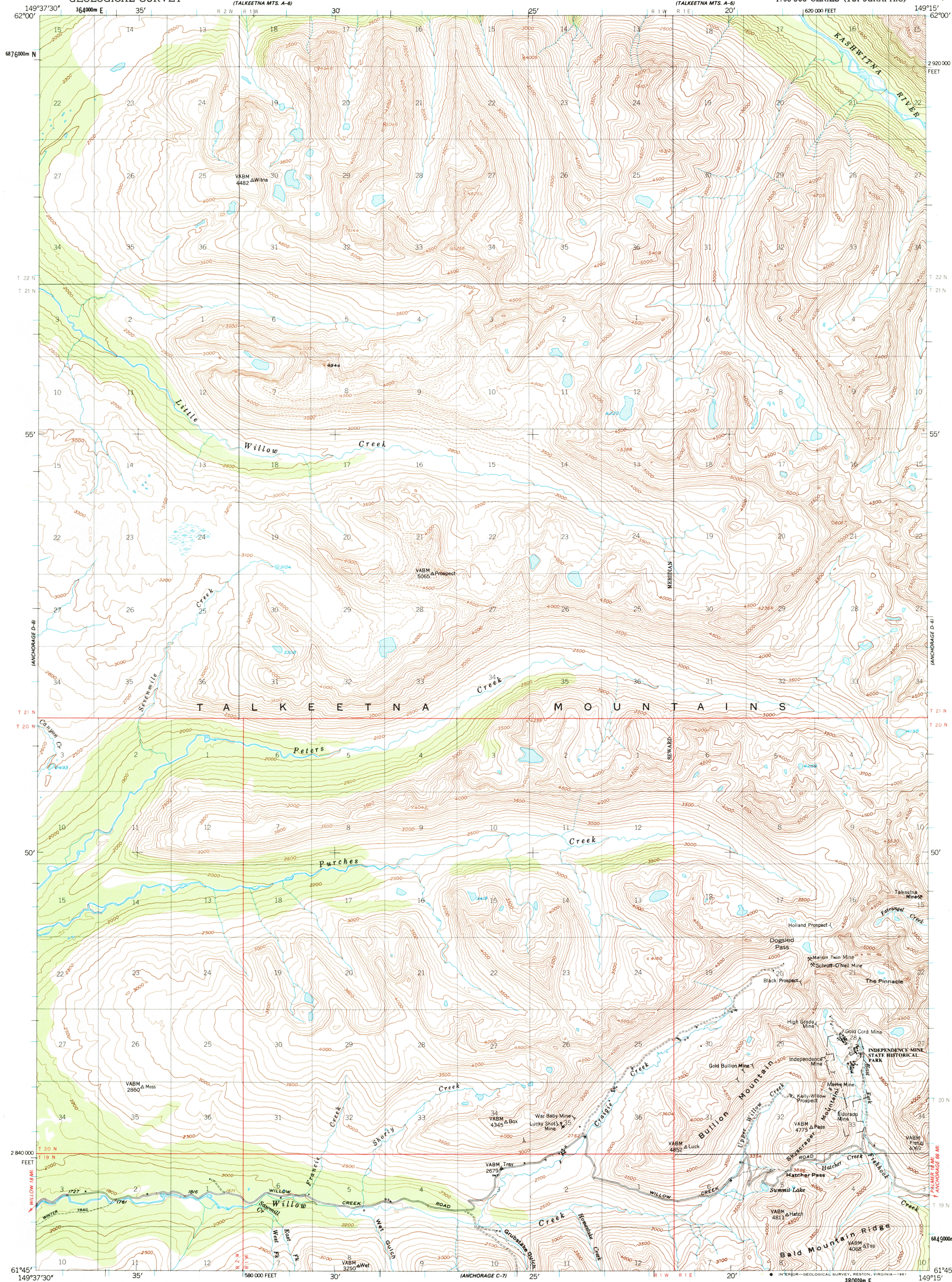
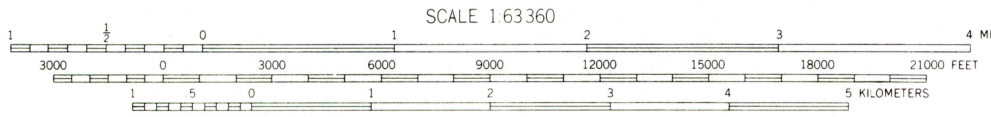
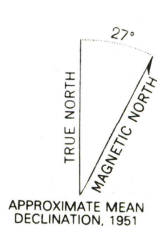


UNITED STATES
DEPARTMENT OF THE INTERIOR
GEOLOGICAL SURVEY

ANCHORAGE (D-7) QUADRANGLE
ALASKA-MATANUSKA-SUSITNA BOROUGH
1:63 360 SERIES (TOPOGRAPHIC)



Mapped, edited, and published by the Geological Survey
Control by USGS, NOS/NOAA and USCE
Topography by photogrammetric methods from aerial photographs
taken 1949, field annotated 1951. Map not field checked
Projection and 1000-meter grid ticks shown in blue:
Universal Transverse Mercator, zone 5
10,000-foot grid ticks based on Alaska coordinate
system, zone 4. 1927 North American Datum
To place on the predicted North American Datum 1983 move
the projection lines 6.2 meters north and 1.18 meters east
Gray land lines represent unsurveyed and unmarked locations
predetermined by the Bureau of Land Management
Folios S-1 and S-2, Seward Meridian
Swamps, as portrayed, indicate only the wetter areas,
usually of low relief, as interpreted from aerial photographs



CONTOUR INTERVAL 100 FEET
AREAS NOT SURVEYED IN DETAIL INDICATED BY BROKEN LINES
NATIONAL GEODETIC VERTICAL DATUM OF 1929

FOR SALE BY U.S. GEOLOGICAL SURVEY
FAIRBANKS, ALASKA 99701, DENVER, COLORADO 80225, OR RESTON, VIRGINIA 22092
A FOLDER DESCRIBING TOPOGRAPHIC MAPS AND SYMBOLS IS AVAILABLE ON REQUEST



ROAD CLASSIFICATION
Light-duty ————— Unimproved dirt —————

ANCHORAGE (D-7), ALASKA
61149-G3-TF-063
1951

MINOR REVISION 1986

