

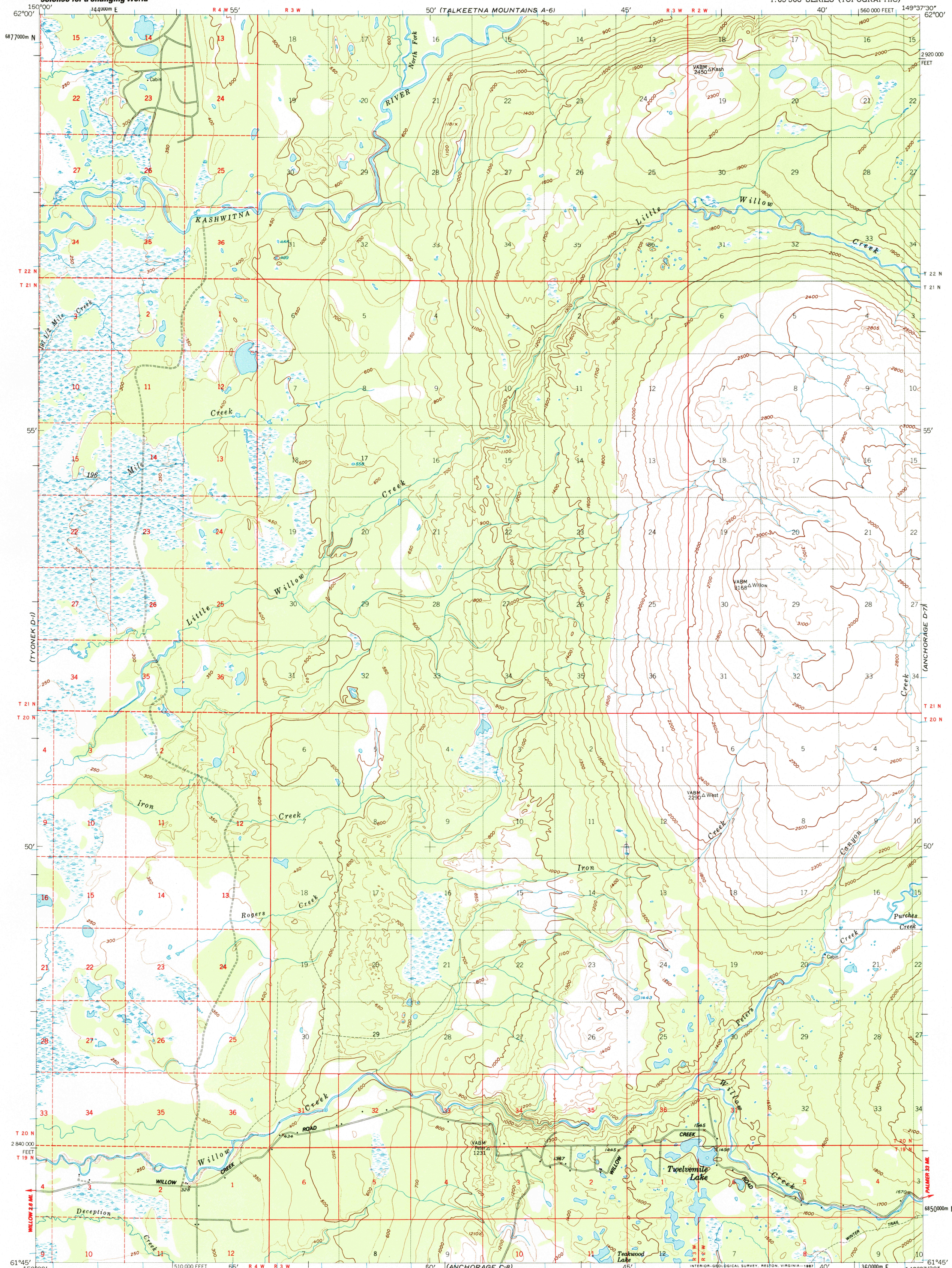
(TALKEETNA A-1)



U.S. DEPARTMENT OF THE INTERIOR  
U.S. GEOLOGICAL SURVEY

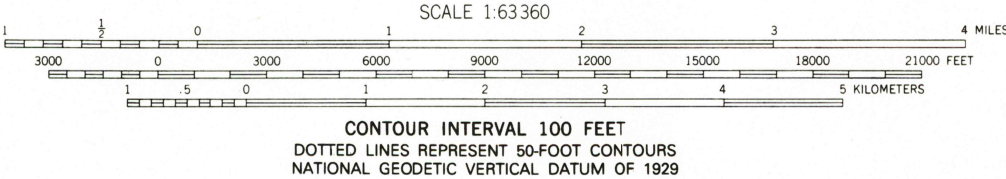
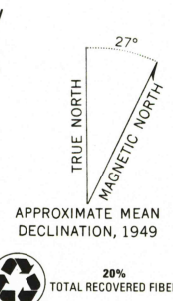
ANCHORAGE (D-8) QUADRANGLE  
ALASKA-MATANUSKA-SUSITNA BOROUGH  
1:63 360 SERIES (TOPOGRAPHIC)

(TALKEETNA MTS. A-8)



(TYONEK C-1)

Mapped, edited, and published by the Geological Survey  
Control by USGS, NOS/NOAA and USCE  
Topography by photogrammetric methods from aerial photographs  
taken 1949. Map not field checked  
Projection and 1000-meter grid ticks shown in blue:  
Universal Transverse Mercator, zone 6  
10,000-foot grid ticks based on Alaska coordinate  
system, zone 4, 1927 North American Datum  
To place on the predicted North American Datum 1983 move  
the projection lines 63 meters north and 119 meters east  
Gray land lines represent unsurveyed and unmarked locations  
determined by the Bureau of Land Management  
Folio S-2, Seward Meridian  
Swamps, as portrayed, indicate only the wetter areas,  
usually of low relief, as interpreted from aerial photographs



CONTOUR INTERVAL 100 FEET  
DOTTED LINES REPRESENT 50-FOOT CONTOURS  
NATIONAL GEODETIC VERTICAL DATUM OF 1929



ROAD CLASSIFICATION  
Light-duty ————— Unimproved dirt —————

ANCHORAGE (D-8), ALASKA  
61149-G6-TF-063  
1949

MINOR REVISION 1986

FOR SALE BY U.S. GEOLOGICAL SURVEY, P.O. BOX 25286, DENVER, COLORADO 80225  
A FOLDER DESCRIBING TOPOGRAPHIC MAPS AND SYMBOLS IS AVAILABLE ON REQUEST

USGS NMID  
HISTORICAL MAP ARCHIVES

JUN 3 0 1999

RECEIVED

