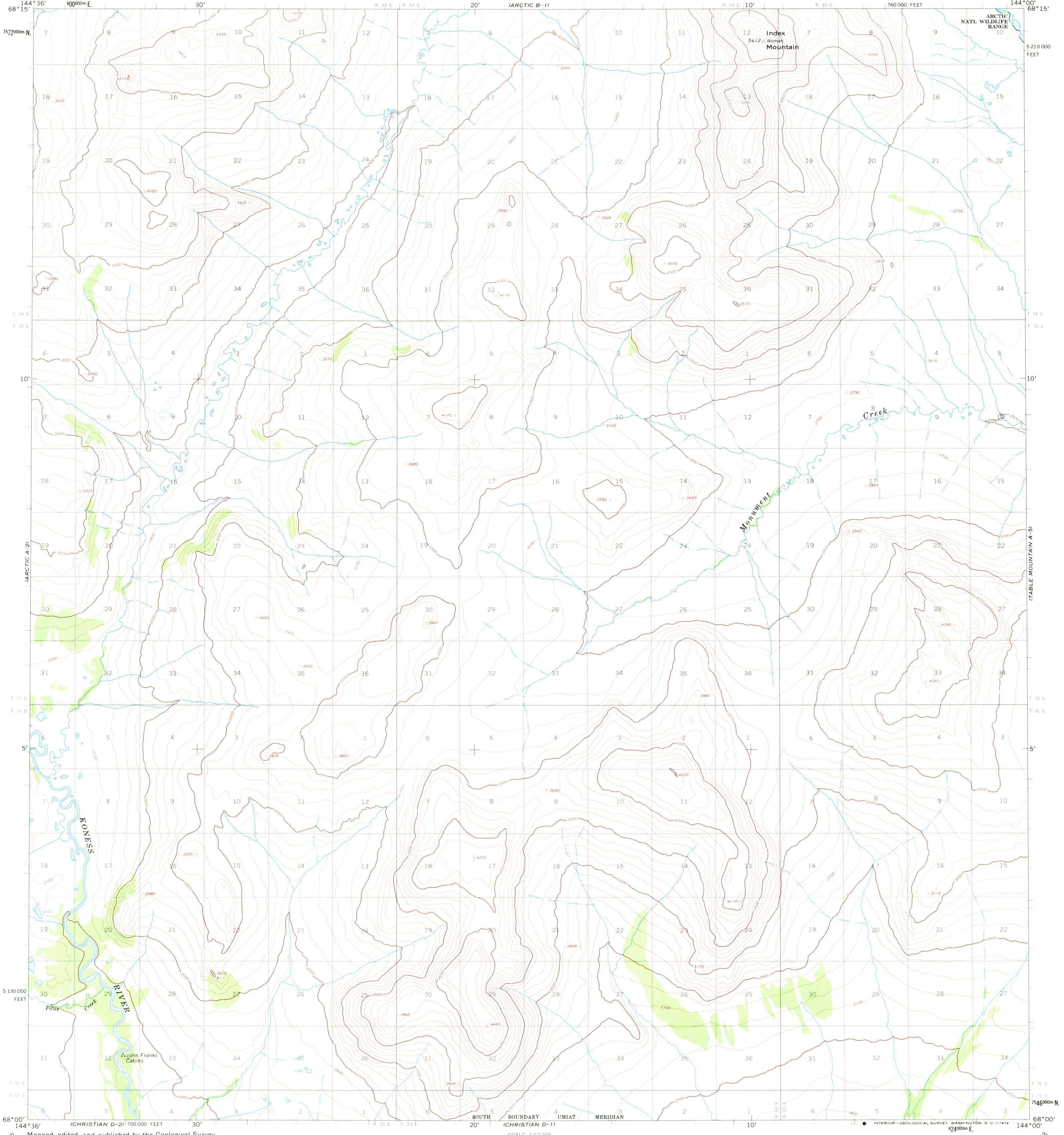


UNITED STATES
DEPARTMENT OF THE INTERIOR
GEOLOGICAL SURVEY

ARCTIC (A-1) QUADRANGLE
ALASKA
1:63360 SERIES (TOPOGRAPHIC)



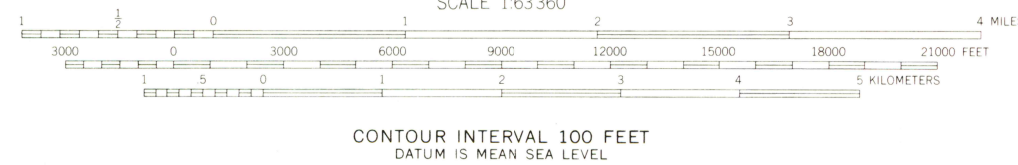
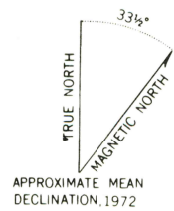
Mapped, edited, and published by the Geological Survey
Control by USGS and USC&GS

Topography by photogrammetric methods from aerial photographs
taken 1972, field annotated 1972. Map not field checked

Projection and 1,000-meter grid ticks: Universal
Transverse Mercator, zone 6
10,000-foot grid ticks based on Alaska coordinate
system, zone 3. 1927 North American datum

Land lines represent unsurveyed and unmarked locations
predetermined by the Bureau of Land Management
Folio U-13, Umiat Meridian

Swamps as portrayed, indicate only the wetter areas,
usually of low relief, as interpreted from aerial photographs



FOR SALE BY U. S. GEOLOGICAL SURVEY
FAIRBANKS, ALASKA 99701, DENVER, COLORADO 80225, OR WASHINGTON, D. C. 20242
A FOLDER DESCRIBING TOPOGRAPHIC MAPS AND SYMBOLS IS AVAILABLE ON REQUEST



ROAD CLASSIFICATION
No roads or trails in this area

ARCTIC (A-1), ALASKA
N6800-W14400/15 X 36

1972

FEB 28 1974

USGS
HISTORICAL FILE
TOPOGRAPHIC DIVISION

3260