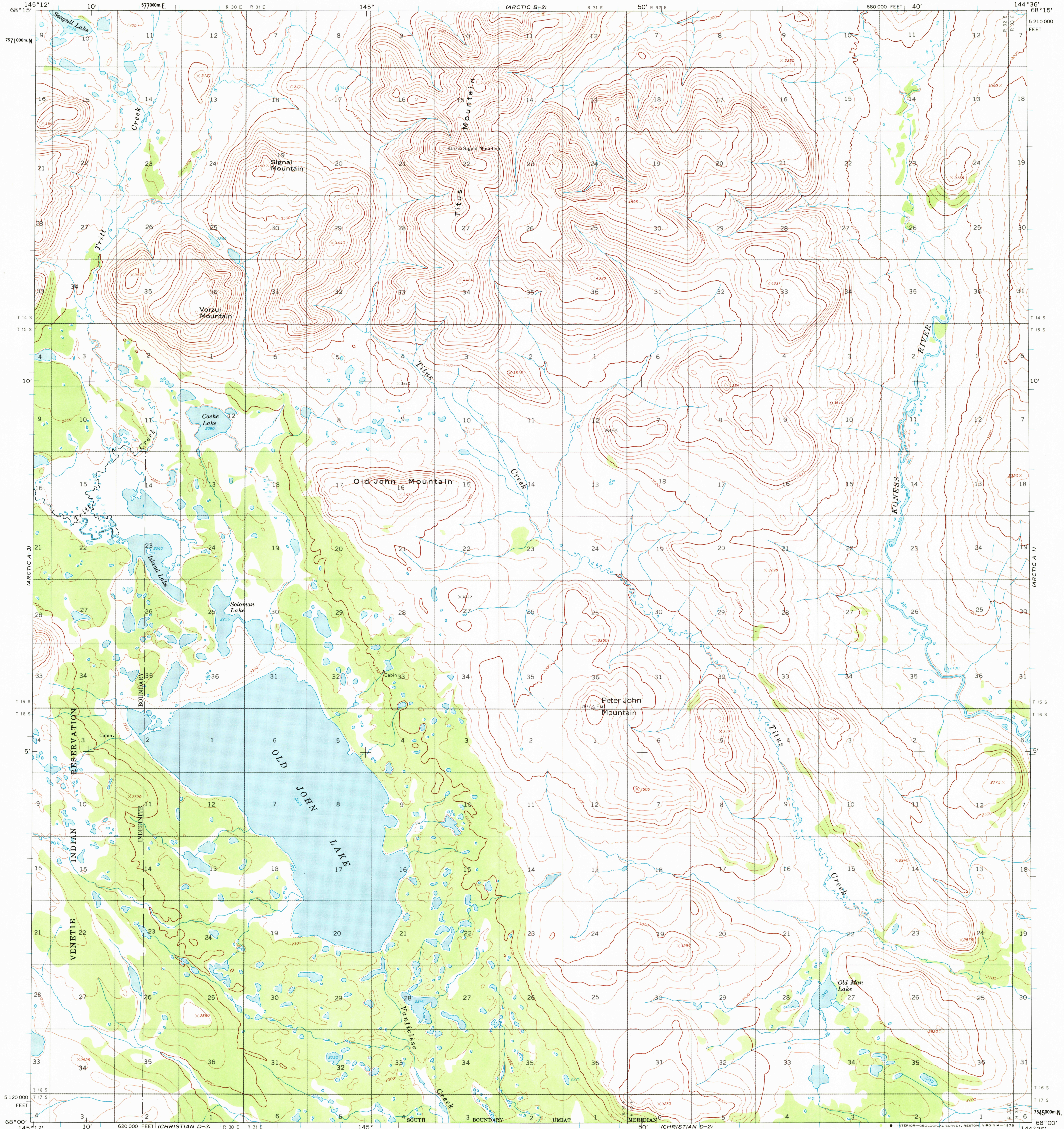


UNITED STATES
DEPARTMENT OF THE INTERIOR
GEOLOGICAL SURVEY

ARCTIC (A-2) QUADRANGLE
ALASKA
1:63 360 SERIES (TOPOGRAPHIC)



Mapped, edited, and published by the Geological Survey

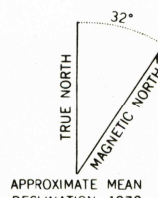
Control by USGS and NOS/NOAA

Topography by photogrammetric methods from aerial photographs taken 1972, field annotated 1972. Map not field checked

Projection and 1,000-metre grid ticks: Universal Transverse Mercator, zone 6
10,000-foot grid ticks based on Alaska coordinate system, zone 3. 1927 North American datum

Land lines represent unsurveyed and unmarked locations predetermined by the Bureau of Land Management
Folios U-12 and U-13, Umiat Meridian

Swamps as portrayed, indicate only the wetter areas, usually of low relief, as interpreted from aerial photographs



CONTOUR INTERVAL 100 FEET
DOTTED LINES REPRESENT 50-FOOT CONTOURS
NATIONAL GEODETIC VERTICAL DATUM OF 1929

FOR SALE BY U.S. GEOLOGICAL SURVEY
FAIRBANKS, ALASKA 99701, DENVER, COLORADO 80225, OR RESTON, VIRGINIA 22092
A FOLDER DESCRIBING TOPOGRAPHIC MAPS AND SYMBOLS IS AVAILABLE ON REQUEST

ROAD CLASSIFICATION
No roads or trails in this area

ARCTIC (A-2), ALASKA
N6800-W14436/15 X 36

1972

APR 0 8 1976

USGS
Historical File
Topographic Division