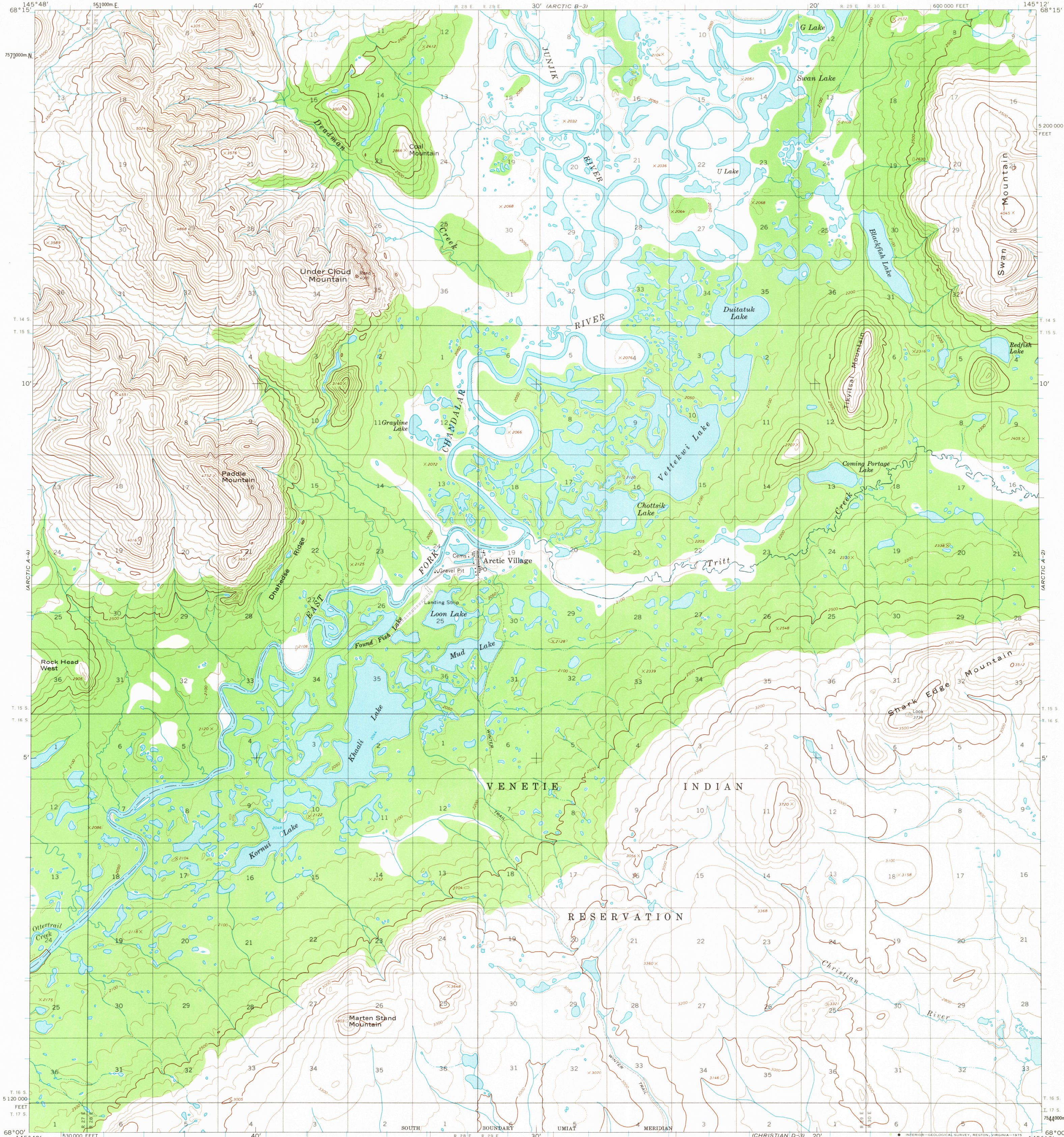
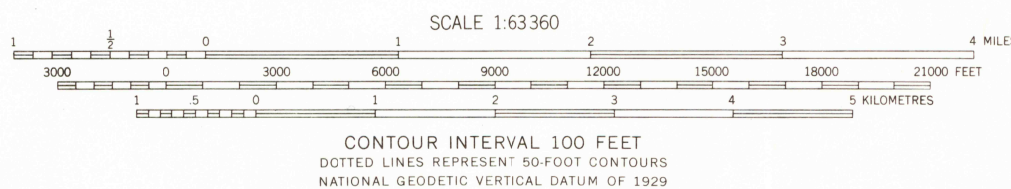
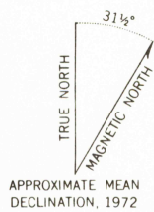


UNITED STATES  
DEPARTMENT OF THE INTERIOR  
GEOLOGICAL SURVEY

ARCTIC (A-3) QUADRANGLE  
ALASKA  
1:63 360 SERIES (TOPOGRAPHIC)



Mapped, edited, and published by the Geological Survey  
Control by USGS and NOS/NOAA  
Topography by photogrammetric methods from aerial photographs  
taken 1972, field annotated 1972. Map not field checked  
Projection and 1,000-metre grid ticks: Universal  
Transverse Mercator, zone 6  
10,000-foot grid ticks based on Alaska coordinate  
system, zone 3. 1927 North American datum  
Land lines represent unsurveyed and unmarked locations  
predetermined by the Bureau of Land Management  
Folio U-12, Umiat Meridian  
Swamps as portrayed, indicate only the wetter areas,  
usually of low relief, as interpreted from aerial photographs



FOR SALE BY U.S. GEOLOGICAL SURVEY  
FAIRBANKS, ALASKA 99701, DENVER, COLORADO 80225, OR RESTON, VIRGINIA 22092  
A FOLDER DESCRIBING TOPOGRAPHIC MAPS AND SYMBOLS IS AVAILABLE ON REQUEST



ROAD CLASSIFICATION  
Light-duty Trails

ARCTIC (A-3), ALASKA  
N6800-W14512/15 X 36

1972

USGS  
HISTORICAL FILE  
TOPOGRAPHIC DIVISION

JAN 0 2 1976