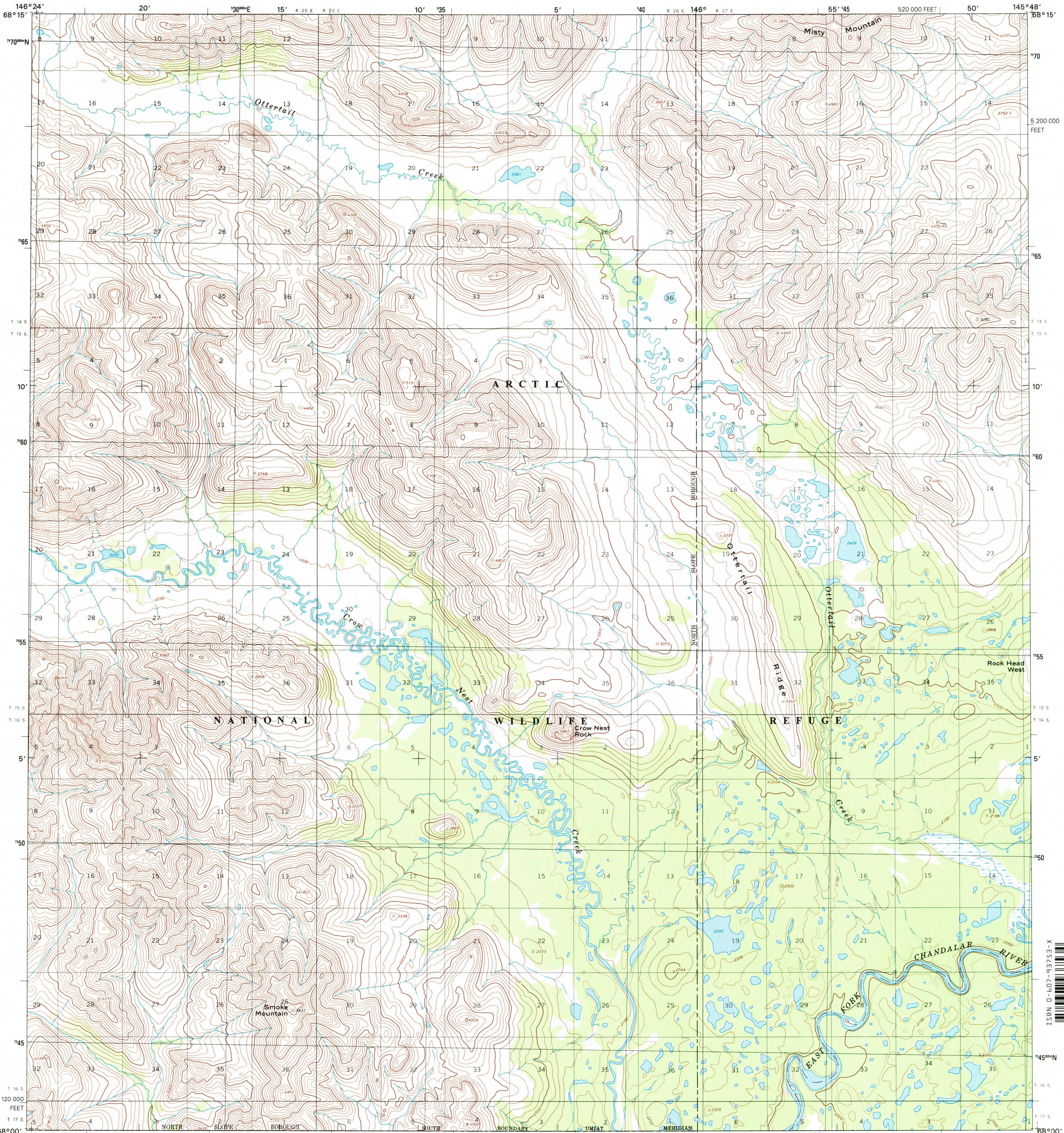




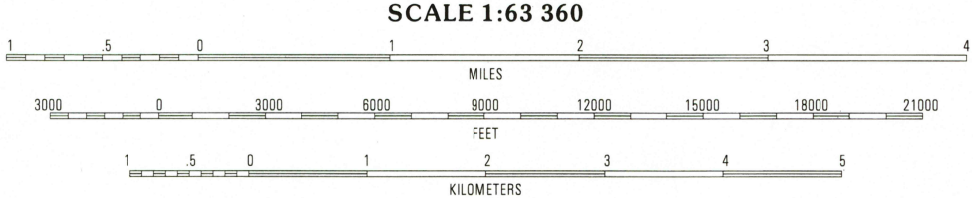
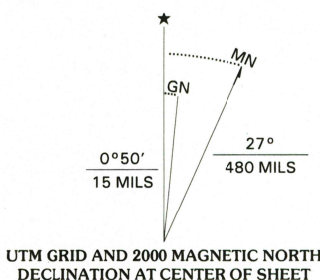
U.S. DEPARTMENT OF THE INTERIOR
U.S. GEOLOGICAL SURVEY

ARCTIC A-4 QUADRANGLE
ALASKA
1:63 360 SERIES (TOPOGRAPHIC)



Produced by the United States Geological Survey

Topography by photogrammetric methods from imagery taken 1972. Boundaries current as of 2000. This map has not been field checked.
North American Datum of 1927 (NAD 27). Projection and 5 000-meter grid: Universal Transverse Mercator, zone 6 10 000-foot ticks: Alaska Coordinate System of 1927 (zone 3)
North American Datum of 1983 (NAD 83) is shown by dashed corner ticks. The values of the shift between NAD 27 and NAD 83 are obtainable from National Geodetic Survey NADCON software
Gray land lines represent unsurveyed and unmarked locations predetermined by the Bureau of Land Management Folio U-12, Umiat Meridian
There may be private inholdings within the boundaries of the National or State reservations shown on this map
Federal reservation boundaries established by the Alaska National Interest Lands Conservation Act, PL 96-487, Dec 2, 1980, are shown as compiled by the administering agencies
Swamps, as portrayed, indicate only the wetter areas, usually of low relief, as interpreted from imagery



CONTOUR INTERVAL 100 FEET
SUPPLEMENTARY CONTOUR INTERVAL 50 FEET
NATIONAL GEODETIC VERTICAL DATUM OF 1929
TO CONVERT FEET TO METERS, MULTIPLY BY 0.3048



INTERIOR - GEOLOGICAL SURVEY, RESTON, VIRGINIA - 2000
ROAD CLASSIFICATION

Primary highway
hard surface Unimproved road
Secondary highway
hard surface 4 wheel drive
Light-duty road, hard or improved surface Trails
State Route

1	2	3
4	5	
6	7	

1 Arctic B-5
2 Arctic B-4
3 Arctic B-3
4 Arctic A-5
5 Arctic A-3
6 Christian D-5
7 Christian D-4

ADJOINING QUADRANGLES

RECEIVED
SEP 30 2000
HISTORICAL MAP ARCHIVES

ARCTIC A-4, AK
1972

FOR SALE BY U.S. GEOLOGICAL SURVEY, P.O. BOX 25286, DENVER, COLORADO 80225
A FOLDER DESCRIBING TOPOGRAPHIC MAPS AND SYMBOLS IS AVAILABLE ON REQUEST