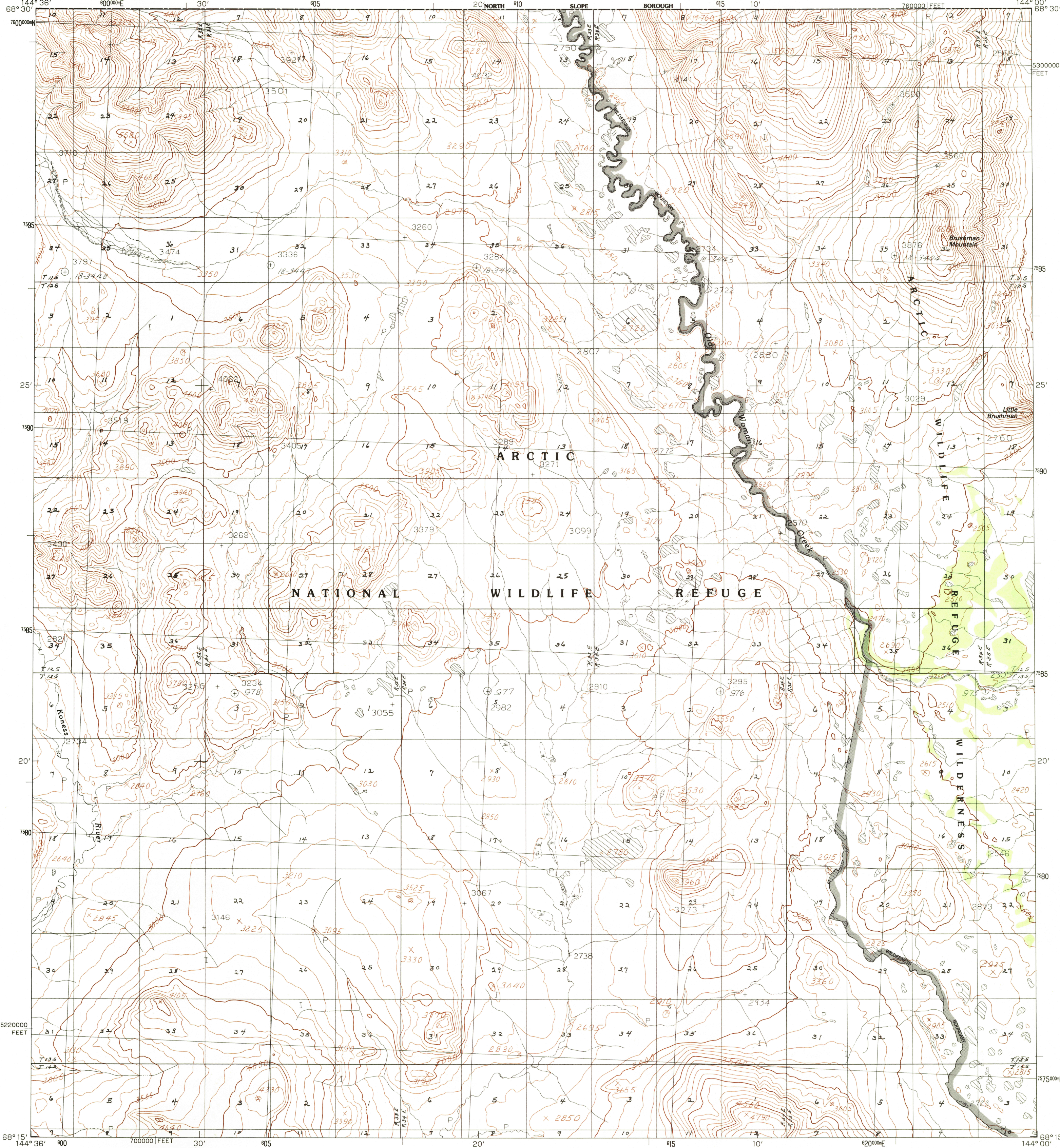


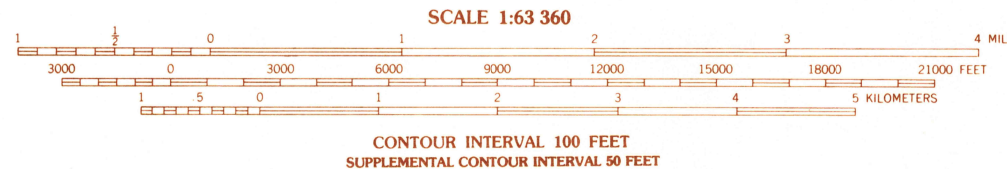
UNITED STATES
DEPARTMENT OF THE INTERIOR
GEOLOGICAL SURVEY

ARCTIC (B-1) QUADRANGLE
ALASKA
1:63 360 SERIES (TOPOGRAPHIC)



PRODUCED BY THE UNITED STATES GEOLOGICAL SURVEY
CONTROL BY USGS, NOS/NOAA
COMPILED FROM AERIAL PHOTOGRAPHS TAKEN 1974
MAP NOT FIELD CHECKED. MAP EDITED 1983
PROJECTION UNIVERSAL TRANSVERSE MERCATOR
GRID. 5000-METER UNIVERSAL TRANSVERSE MERCATOR ZONE 6
20,000-FOOT STATE GRID TICS ALASKA ZONE 3
UTM GRID DECLINATION 231° EAST
1983 MAGNETIC NORTH DECLINATION 32° EAST
VERTICAL DATUM NATIONAL GEODETIC VERTICAL DATUM OF 1999
HORIZONTAL DATUM 1927 NORTH AMERICAN DATUM
To place on the predicted North American Datum of 1983, move the
projection lines 32 meters north and 112 meters east
Land lines represent unsurveyed and unmarked locations prede-
termined by the Bureau of Land Management, Folios U-12 and U-13.
Unial Meridian
There may be private inholdings within the boundaries of any Federal
or State reservations shown on this map
Federal reservation boundaries established by the Alaska National In-
terest Lands Conservation Act, PL 96-487, Dec. 2, 1980, are shown
as compiled by the administering agencies
Swamps, as portrayed, indicate only the wetter areas, usually of low
relief, as interpreted from aerial photographs
All lakes are perennial

PROVISIONAL MAP
Produced from original
manuscript drawings. In-
formation shown as of date
of photography 3



ROAD LEGEND
No roads or trails in this area

1	2	3	1 Arctic (C-2)
			2 Arctic (C-1)
			3 Table Mountain (C-5)
4	5		4 Arctic (B-2)
			5 Table Mountain (B-5)
			6 Arctic (A-2)
6	7	8	7 Arctic (A-1)
			8 Table Mountain (A-5)



ARCTIC (B-1), ALASKA
PROVISIONAL EDITION 1983
N6815-W14400-15X36

FOR SALE BY U.S. GEOLOGICAL SURVEY, FAIRBANKS, ALASKA 99701
DENVER, COLORADO 80225, OR RESTON, VIRGINIA 22092