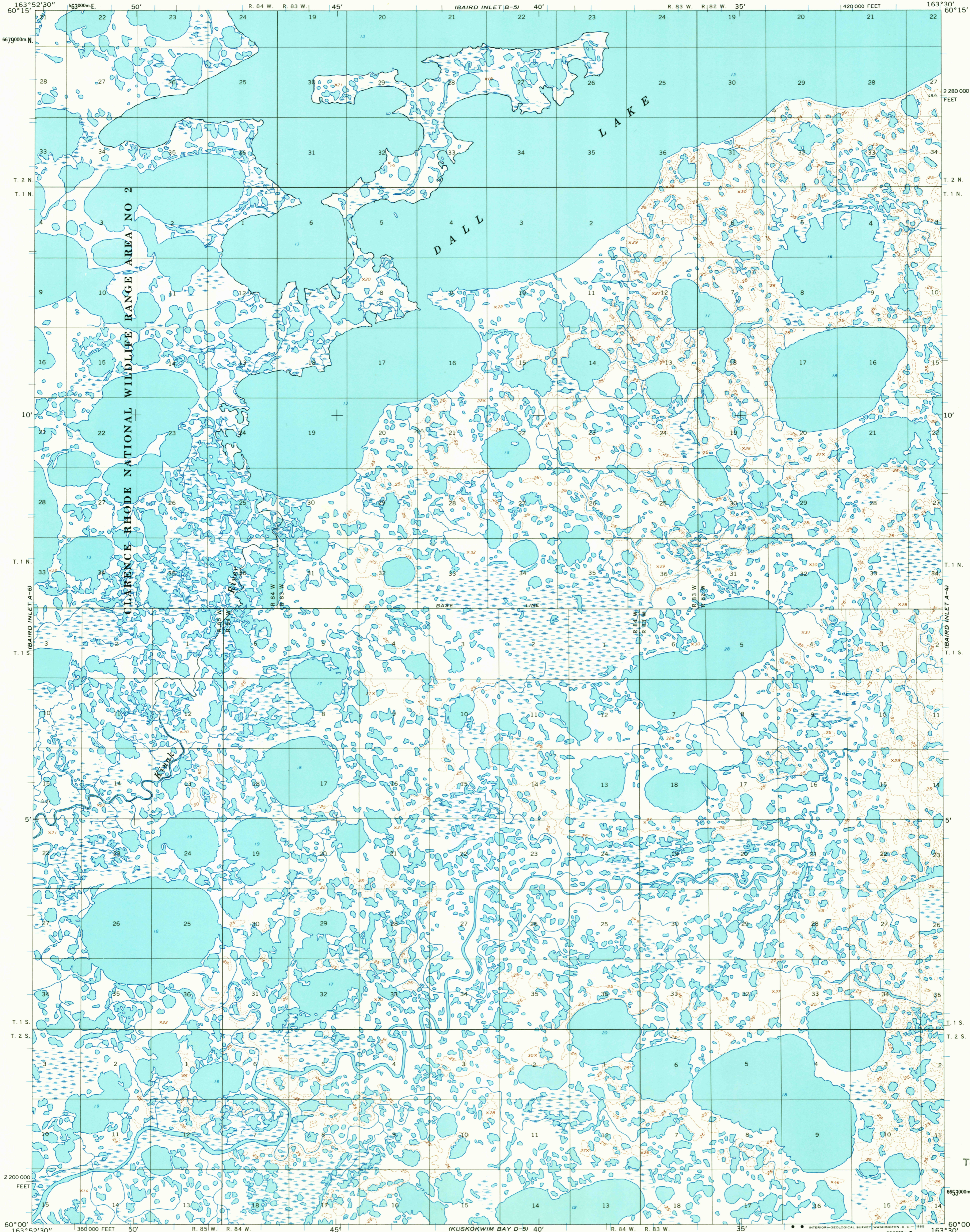


UNITED STATES
DEPARTMENT OF THE INTERIOR
GEOLOGICAL SURVEY

BAIRD INLET (A-5) QUADRANGLE
ALASKA
1:63 360 SERIES (TOPOGRAPHIC)



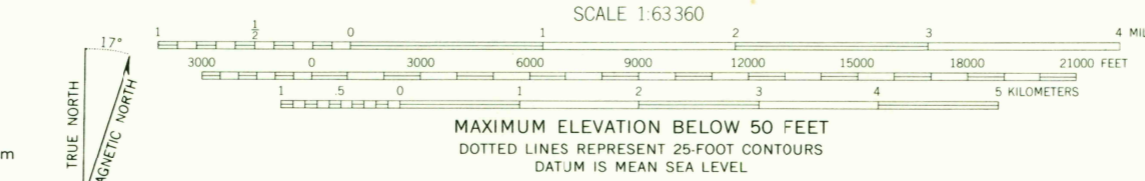
Mapped by the Army Map Service
Edited and published by the Geological Survey

Control by USCGS, and USCE

Topography by photogrammetric methods from aerial photographs
taken 1953, field annotated 1954. Map not field checked

Universal Transverse Mercator projection. 1927 North American datum
10,000-foot grid based on Alaska coordinate system, zone 7
1000-meter Universal Transverse Mercator grid ticks,
zone 3, shown in blue

Land lines represent unsurveyed and unmarked locations
Predetermined by the Bureau of Land Management
Folio S-8, Seward Meridian



ROAD CLASSIFICATION
No roads or trails in this area



FOR SALE BY U. S. GEOLOGICAL SURVEY
FAIRBANKS, ALASKA, DENVER 25, COLORADO OR WASHINGTON 25, D. C.
A FOLDER DESCRIBING TOPOGRAPHIC MAPS AND SYMBOLS IS AVAILABLE ON REQUEST

BAIRD INLET (A-5), ALASKA

N6000—W16330/15 X 22.5

1954

MAY 17 1965

2140

COPY
TOPOGRAPHIC DIVISION
HISTORICAL