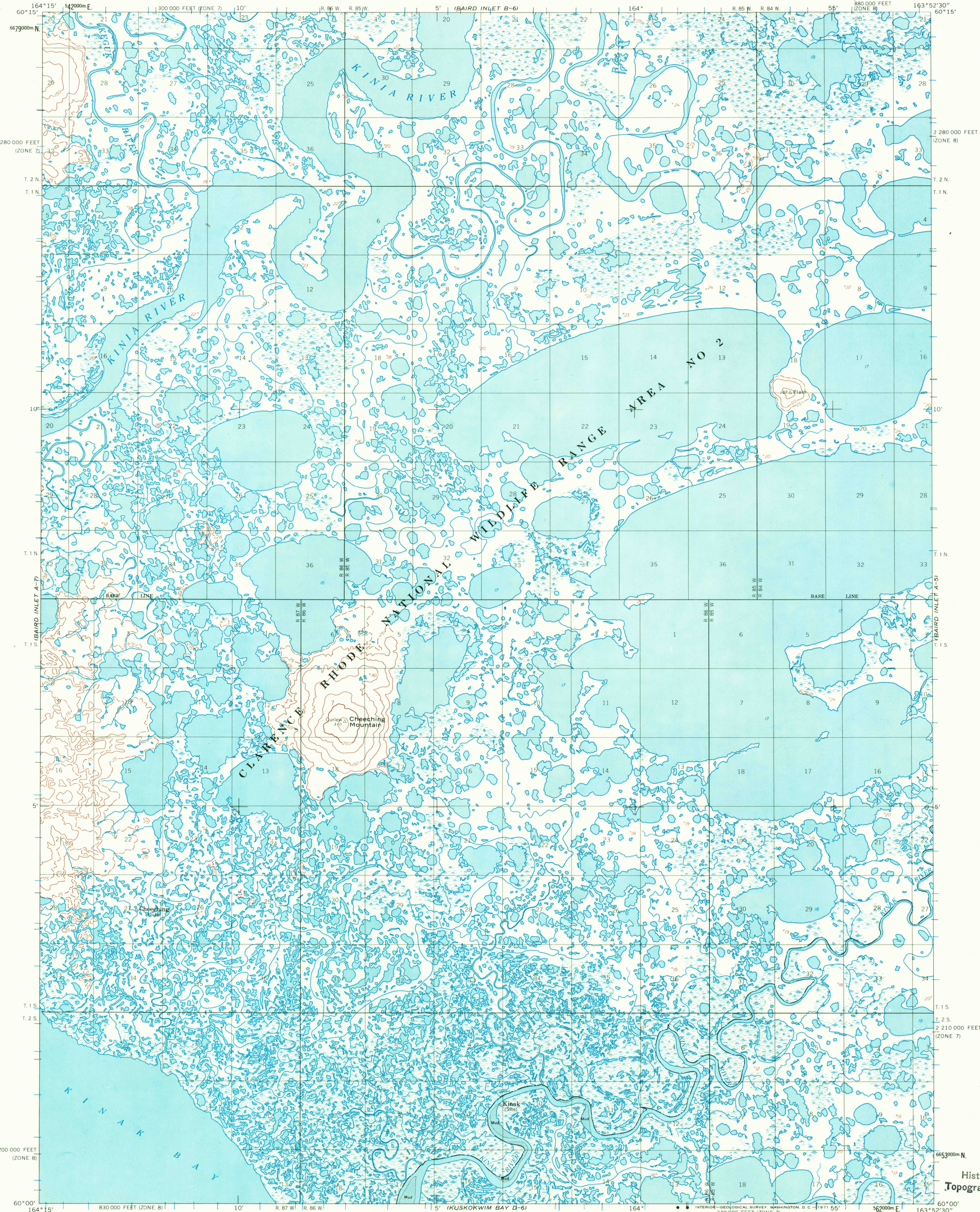


UNITED STATES  
DEPARTMENT OF THE INTERIOR  
GEOLOGICAL SURVEY

BAIRD INLET (A-6) QUADRANGLE  
ALASKA

1:63 360 SERIES (TOPOGRAPHIC)



Maped by the U. S. Army Topographic Command  
Published for civil use by the Geological Survey  
Control by USC&GS and USCE  
Topography by photogrammetric methods from aerial photographs  
taken 1952 and 1957, field annotated 1954. Map not field checked  
Universal Transverse Mercator projection. 1927 North American datum  
10,000-foot grids based on Alaska coordinate system, zones 7 and 8  
1000-meter Universal Transverse Mercator grid ticks,  
zone 3, shown in blue  
Land lines represent unsurveyed and unmarked locations  
predetermined by the Bureau of Land Management  
Folios S-8 and S-20 Seward meridian

TRUE NORTH  
MAGNETIC NORTH  
APPROXIMATE MEAN  
DECLINATION, 1954

SCALE 1:63 360  
CONTOUR INTERVAL 50 FEET  
DASHED LINES REPRESENT 25-FOOT CONTOURS  
DATUM IS MEAN SEA LEVEL  
SHORELINE SHOWN REPRESENTS THE APPROXIMATE LINE OF MEAN HIGH WATER



QUADRANGLE LOCATION

ROAD CLASSIFICATION  
No roads or trails in this area

FOR SALE BY U. S. GEOLOGICAL SURVEY  
FAIRBANKS, ALASKA 99701, DENVER, COLORADO 80225, OR WASHINGTON, D.C. 20242  
A FOLDER DESCRIBING TOPOGRAPHIC MAPS AND SYMBOLS IS AVAILABLE ON REQUEST

BAIRD INLET (A-6), ALASKA  
N6000—W16352.5/15 X 22.5

1954

U.S.G.S.  
FILE COPY  
TOPOGRAPHIC DIVISION

HISTORICAL

APR 6 1988

71