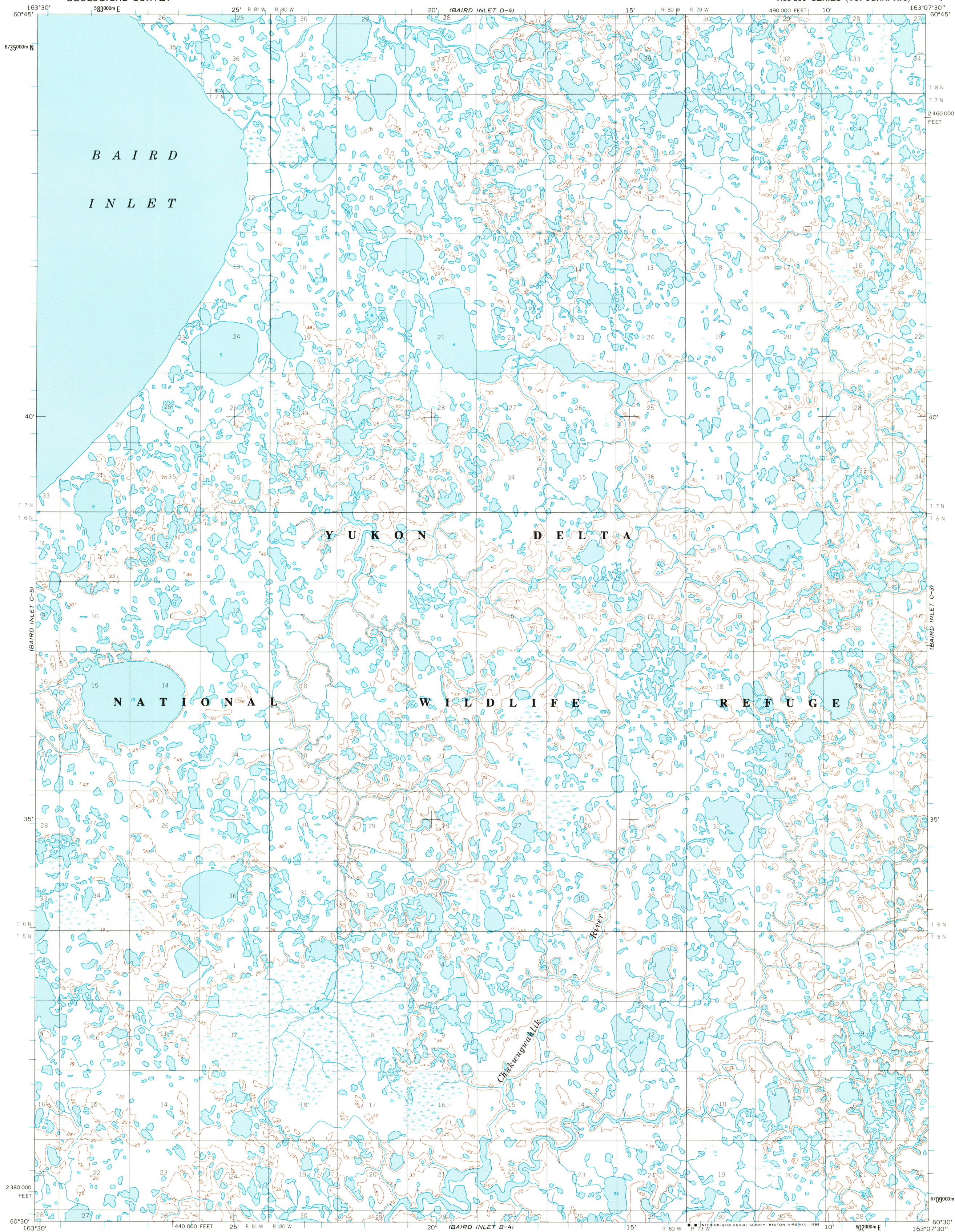
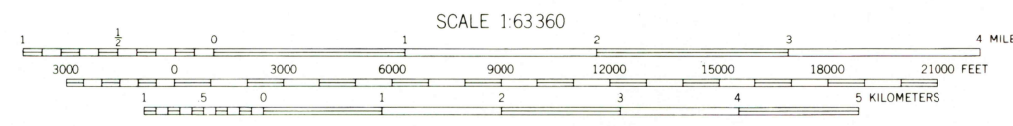
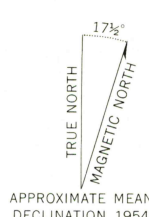


UNITED STATES
DEPARTMENT OF THE INTERIOR
GEOLOGICAL SURVEY

BAIRD INLET (C-4) QUADRANGLE
ALASKA
1:63 360 SERIES (TOPOGRAPHIC)



Map by the Defense Mapping Agency
Edited and published by the Geological Survey
Control by USGS, NOS/NOAA and USCE
Topography by photogrammetric methods from aerial photographs
taken 1952, field annotated 1954. Map not field checked
Projection and 1000-meter grid ticks shown in blue:
Universal Transverse Mercator, zone 3
10,000-foot grid ticks based on Alaska coordinate
system, zone 7. 1927 North American Datum
To place on the predicted North American Datum 1983 move
the projection lines 90 meters north and 126 meters east
Land lines represent unsurveyed and unmarked locations
determined by the Bureau of Land Management
Folio S-9, Seward Meridian
Swamps, as portrayed, indicate only the wetter areas,
usually of low relief, as interpreted from aerial photographs
Federal reservation boundaries established by The Alaska National
Interest Lands Conservation Act, PL 96-487, Dec. 2, 1980, are
shown as compiled by the administering agencies
There may be private inholdings within the boundaries of
the National or State reservations shown on this map



CONTOUR INTERVAL 50 FEET
DASHED LINES REPRESENT 25-FOOT CONTOURS
NATIONAL GEODETIC VERTICAL DATUM OF 1929
SHORELINE SHOWN REPRESENTS THE APPROXIMATE LINE OF MEAN HIGH WATER
THE MEAN RANGE OF TIDE IS APPROXIMATELY 4 FEET

FOR SALE BY U. S. GEOLOGICAL SURVEY
FAIRBANKS, ALASKA 99701, DENVER, COLORADO 80225, OR RESTON, VIRGINIA 22092
A FOLDER DESCRIBING TOPOGRAPHIC MAPS AND SYMBOLS IS AVAILABLE ON REQUEST



ROAD CLASSIFICATION
No roads or trails in this area

BAIRD INLET (C-4), ALASKA
60163-E2-TF-063
1954

USGS NMD HISTORICAL MAP

SEP 27 1988

REC'D FILE COPY