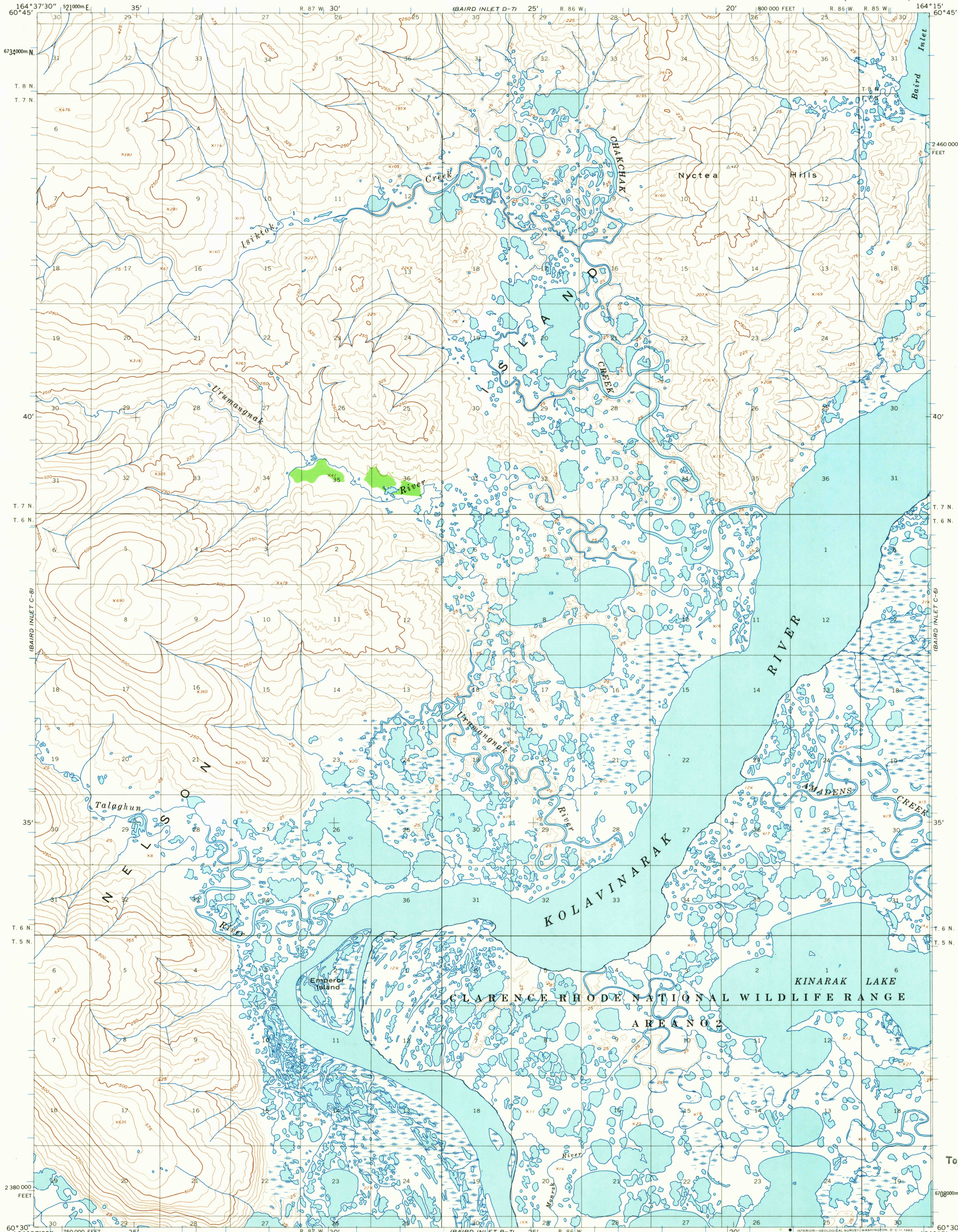


UNITED STATES
DEPARTMENT OF THE INTERIOR
GEOLOGICAL SURVEY

BAIRD INLET (C-7) QUADRANGLE
ALASKA
1:63 360 SERIES (TOPOGRAPHIC)



Mapped by the Army Map Service
Edited and published by the Geological Survey
Control by USC&GS, and USCE

Topography by photogrammetric methods from aerial photographs
taken 1952 and 1957, field annotated 1954. Map not field checked
Universal Transverse Mercator projection. 1927 North American datum
10,000-foot grid based on Alaska coordinate system, zone 8
1000-meter Universal Transverse Mercator grid ticks,
zone 3, shown in blue
Land lines represent unsurveyed and unmarked locations
predetermined by the Bureau of Land Management
Folio S-8, Seward Meridian

TRUE NORTH
MAGNETIC NORTH
APPROXIMATE MEAN
DECLINATION, 1954

SCALE 1:63 360
1 2 3 4 MILES
3000 0 3000 6000 9000 12000 15000 18000 21000 FEET
1 2 3 4 5 KILOMETERS
CONTOUR INTERVAL 50 FEET
DOTTED LINES REPRESENT 25-FOOT CONTOURS
DATUM IS MEAN SEA LEVEL



U.S.G.S.
TOPOGRAPHIC DIVISION
BAIRD INLET (C-7), ALASKA
N6030-W16415/15X22.5
1954

ROAD CLASSIFICATION
No roads or trails in this area

USGS
Historical File
Topographic Division

JUL 6 1965

2210

FOR SALE BY U. S. GEOLOGICAL SURVEY
FAIRBANKS, ALASKA, DENVER 25, COLORADO OR WASHINGTON 25, D. C.
A FOLDER DESCRIBING TOPOGRAPHIC MAPS AND SYMBOLS IS AVAILABLE ON REQUEST