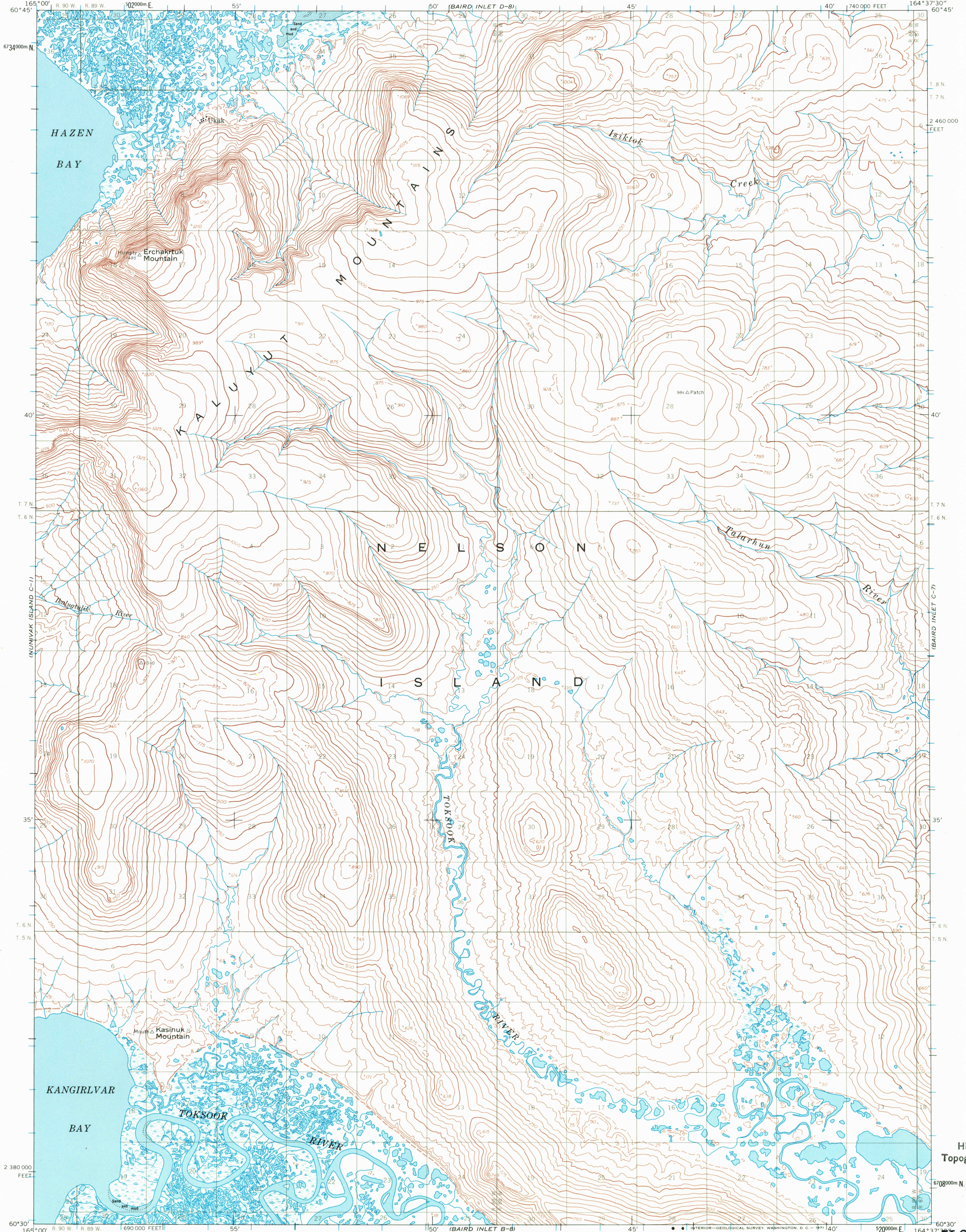
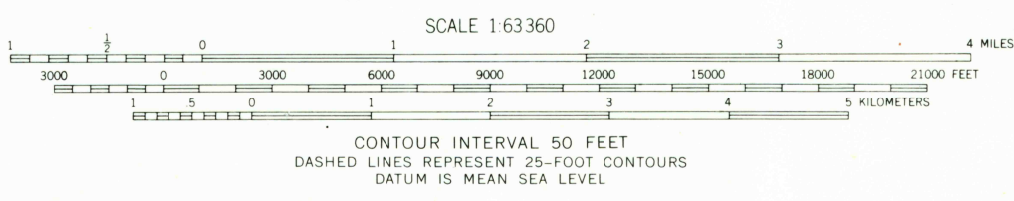
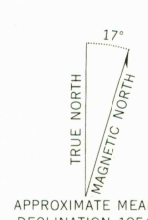


UNITED STATES
DEPARTMENT OF THE INTERIOR
GEOLOGICAL SURVEY

BAIRD INLET (C-8) QUADRANGLE
ALASKA
1:63 360 SERIES (TOPOGRAPHIC)



Mapped by the Army Map Service
Edited and published by the Geological Survey
Control by USC&GS and USCE
Topography by photogrammetric methods from aerial photographs
taken 1957, field annotated 1954. Map not field checked
Universal Transverse Mercator projection. 1927 North American datum
10,000-foot grid based on Alaska coordinate system, zone 8
1000-meter Universal Transverse Mercator grid ticks,
zone 3, shown in blue
Land lines represent unsurveyed and unmarked locations
predetermined by the Bureau of Land Management
Folio S-8, Seward Meridian



BAIRD INLET (C-8), ALASKA
N6030—W16437.5/15 X 22.5
1954

USGS
Historical File
Topographic Division

U.S.G.S.
TOPOGRAPHIC DIVISION
ROAD CLASSIFICATION
Trails

HISTORICAL COPY
JUN 8 1971