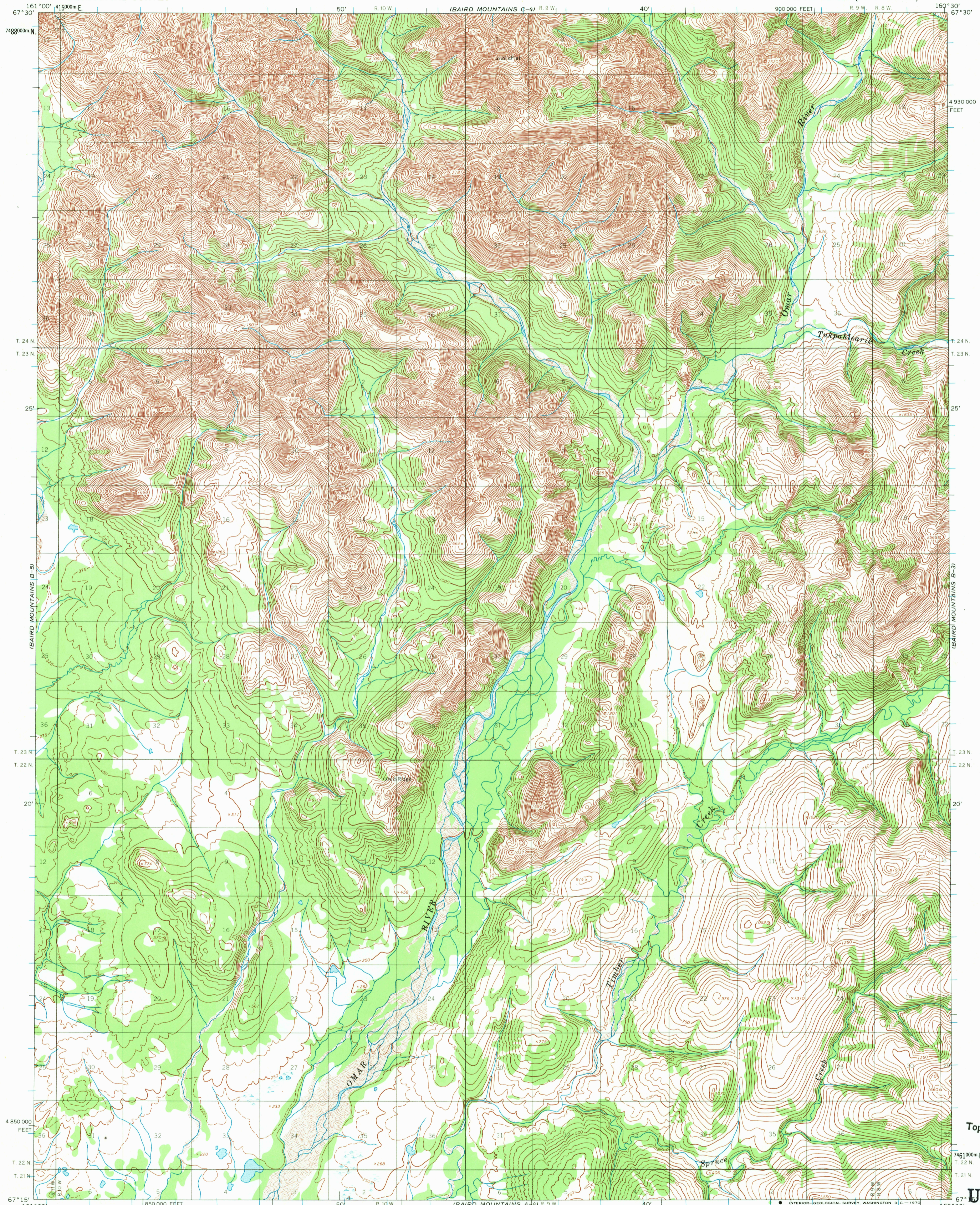


UNITED STATES
DEPARTMENT OF THE INTERIOR
GEOLOGICAL SURVEY

BAIRD MOUNTAINS (B-4) QUADRANGLE
ALASKA
1:63 360 SERIES (TOPOGRAPHIC)

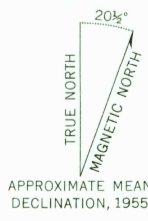


Mapped by the Army Map Service
Published for civil use by the Geological Survey
Control by US&GS and USCE

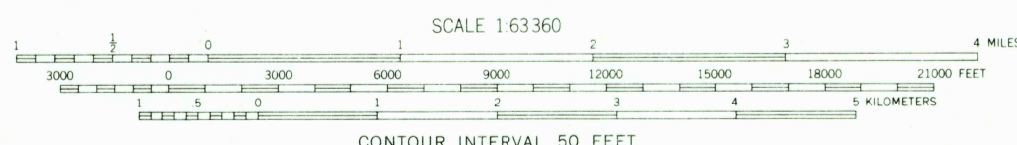
Topography by photogrammetric methods from aerial photographs
taken 1955, field annotated 1955. Map not field checked

Universal Transverse Mercator projection. 1927 North American datum
10,000-foot grid based on Alaska coordinate system, zone 7
1000-meter Universal Transverse Mercator grid ticks,
zone 4, shown in blue

Land lines represent unsurveyed and unmarked locations
predetermined by the Bureau of Land Management
Folio K-3, Kateel River Meridian



APPROXIMATE MEAN
DECLINATION, 1955



SCALE 1:63 360
CONTOUR INTERVAL 50 FEET
DASHED LINES REPRESENT 25-FOOT CONTOURS
DATUM IS MEAN SEA LEVEL



QUADRANGLE LOCATION

USGS
Historical File
Topographic Division

U.S.G.S.
FILE COPY
TOPOGRAPHIC DIVISION

ROAD CLASSIFICATION
No roads or trails

BAIRD MOUNTAINS (B-4), ALASKA
N6715-W16030/15 X 30

1955

HISTORICAL

2815
JUN 19 1970