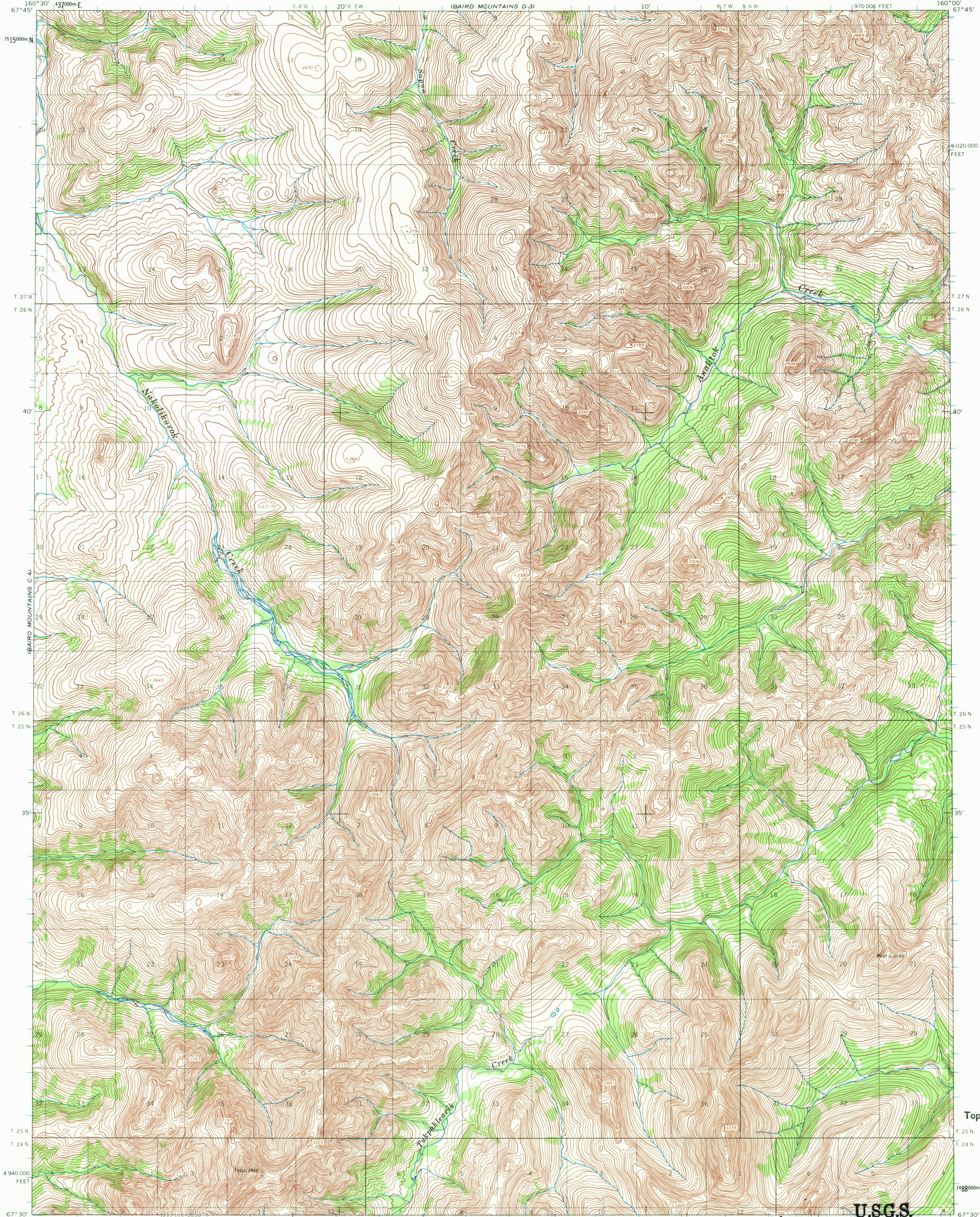


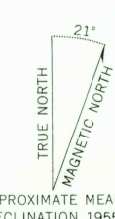
UNITED STATES
DEPARTMENT OF THE INTERIOR
GEOLOGICAL SURVEY

BAIRD MOUNTAINS (C-3) QUADRANGLE
ALASKA
1:63 360 SERIES (TOPOGRAPHIC)

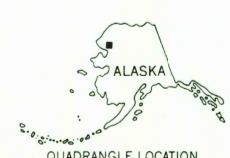


USGS
Historical File
Topographic Division

Mapped by the Army Map Service
Published for civil use by the Geological Survey
Control by USC&GS and USCE
Topography by photogrammetric methods from aerial photographs
taken 1955, field annotated 1955. Map not field checked
Universal Transverse Mercator projection. 1927 North American datum
10,000-foot grid based on Alaska coordinate system, zone 7
1000-meter Universal Transverse Mercator grid ticks,
zone 4, shown in blue
Land lines represent unsurveyed and unmarked locations
predetermined by the Bureau of Land Management
Folio K-3, Kateel River Meridian



CONTOUR INTERVAL 50 FEET
DASHED LINES REPRESENT 25-FOOT CONTOURS
DATUM IS MEAN SEA LEVEL



USGS
FILE COPY
TOPOGRAPHIC DIVISION

HISTORICAL

BAIRD MOUNTAINS (C-3), ALASKA
N6730-W16000/15 X 30

FOR SALE BY U. S. GEOLOGICAL SURVEY
FAIRBANKS, ALASKA 99701, DENVER, COLORADO 80225, OR WASHINGTON, D. C. 20242
A FOLDER DESCRIBING TOPOGRAPHIC MAPS AND SYMBOLS IS AVAILABLE ON REQUEST

1955

2710
JUN 19 1970