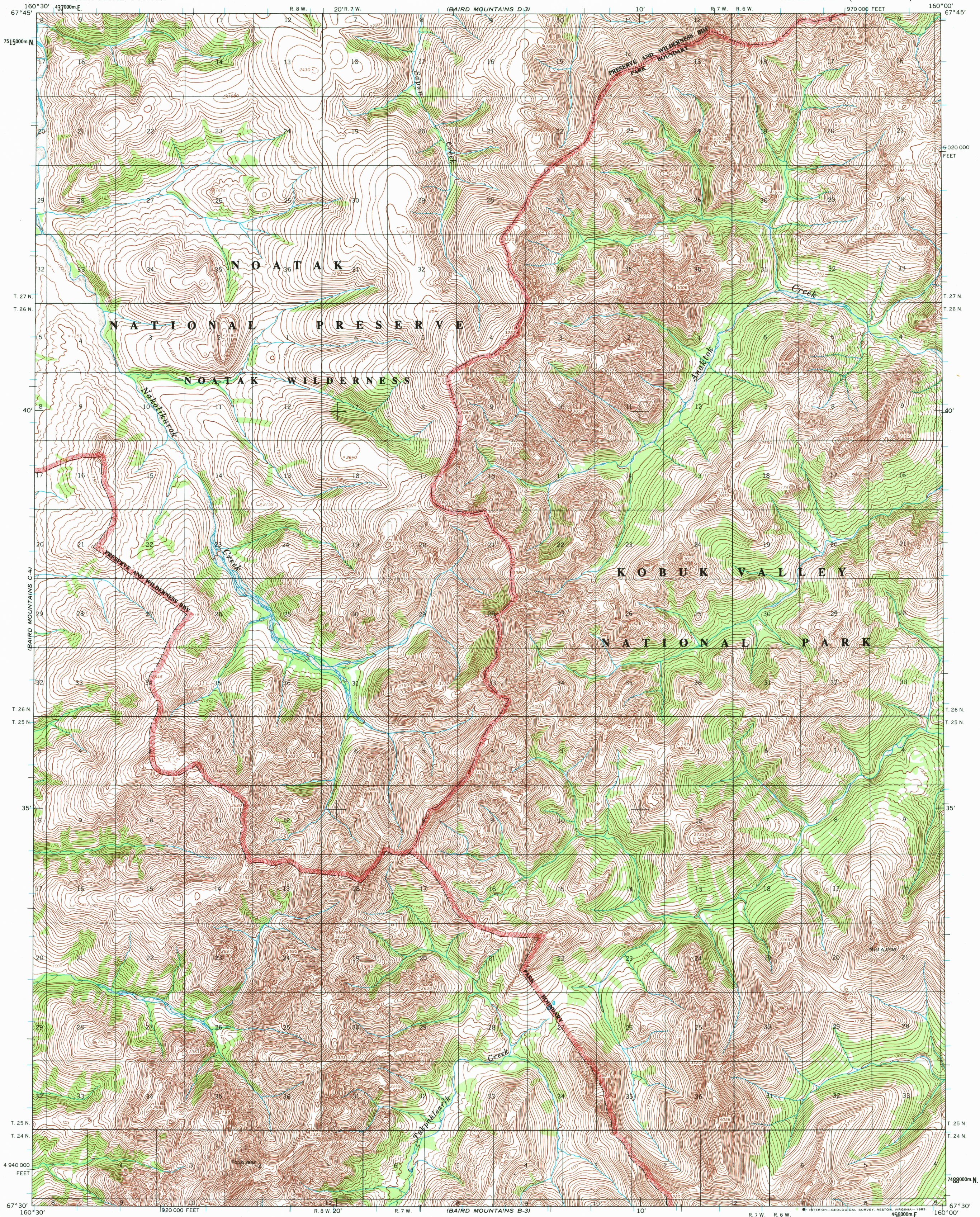
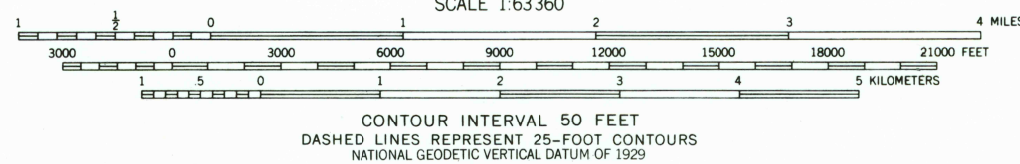
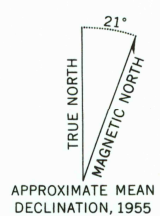


UNITED STATES
DEPARTMENT OF THE INTERIOR
GEOLOGICAL SURVEY

BAIRD MOUNTAINS (C-3) QUADRANGLE
ALASKA
1:63 360 SERIES (TOPOGRAPHIC)



Map by the Defense Mapping Agency
Published for civil use by the Geological Survey
Control by NOS/NOAA and USCE
Topography by photogrammetric methods from aerial photographs
taken 1955, field annotated 1955. Map not field checked
Projection and 1000-meter grid ticks shown in blue:
Universal Transverse Mercator, zone 4
10,000-foot grid ticks based on Alaska coordinate
system, zone 7. 1927 North American datum
To place on the predicted North American Datum 1983 move
the projection lines 72 meters north and 125 meters east
Gray land lines represent unsurveyed and unmarked locations
predetermined by the Bureau of Land Management
Folio K-3, Kater River Meridian
Swamps, as portrayed, indicated only the wetter areas,
usually of low relief, as interpreted from aerial photographs
There may be private inholdings within the boundaries
of the National or State reservations shown on this map



BAIRD MOUNTAINS (C-3), ALASKA
N6730—W16000/15 X 30

1955
MINOR REVISIONS 1982

FOR SALE BY U.S. GEOLOGICAL SURVEY
FAIRBANKS, ALASKA 99701, DENVER, COLORADO 80225, OR RESTON, VIRGINIA 22092
A FOLDER DESCRIBING TOPOGRAPHIC MAPS AND SYMBOLS IS AVAILABLE ON REQUEST

Federal reservations boundaries established by The Alaska National
Interest Lands Conservation Act, PL 96-487, Dec. 2, 1980 are shown as
compiled by the administering agencies on the Alaska boundaries map set

ROAD CLASSIFICATION
No roads or trails in this area

APR 11 1983

RETURN TO:
NMD HISTORICAL MAP ARCHIVES
USGS NATIONAL CENTER, MS-522
RESTON, VA 22092