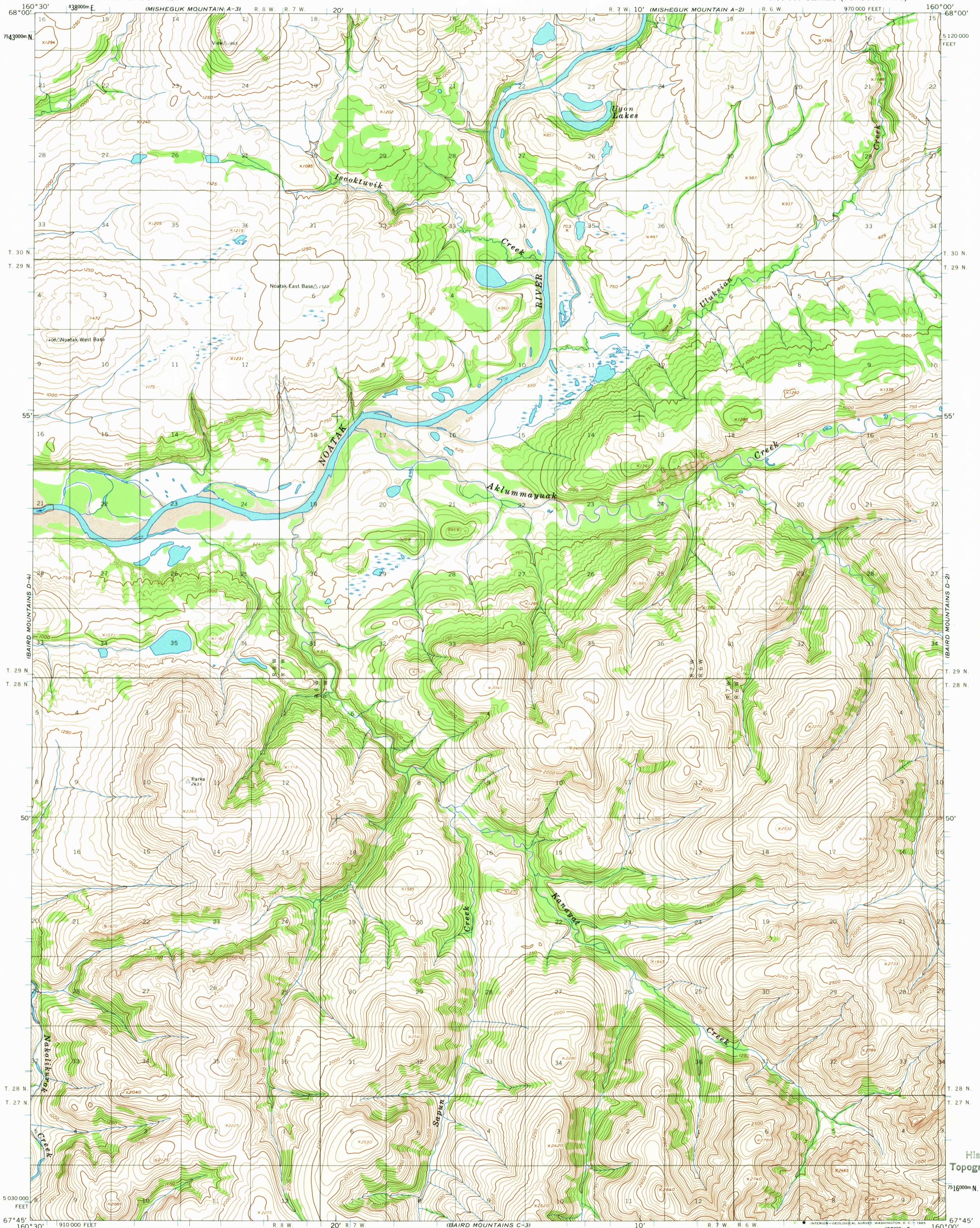


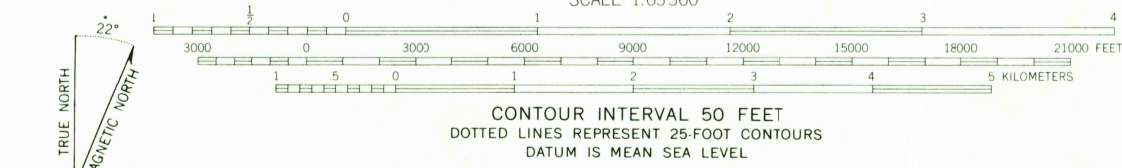
UNITED STATES  
DEPARTMENT OF THE INTERIOR  
GEOLOGICAL SURVEY

BAIRD MOUNTAINS (D-3) QUADRANGLE  
ALASKA  
1:63 360 SERIES (TOPOGRAPHIC)



Mapped by the Army Map Service  
Edited and published by the Geological Survey  
Control by USC&GS and USCE

Topography by photogrammetric methods from aerial photographs  
taken 1955; field annotated 1955. Map not field checked  
Universal Transverse Mercator projection. 1927 North American datum  
10,000-foot grid based on Alaska coordinate system, zone 7  
1000-meter Universal Transverse Mercator grid ticks,  
zone 4, shown in blue  
Land lines represent unsurveyed and unmarked locations  
predetermined by the Bureau of Land Management  
Folio K-3, Kateel River Meridian



USGS  
Historical File  
Topographic Division  
ROAD CLASSIFICATION  
No roads or trails in this area  
2120  
BAIRD MOUNTAINS (D-3), ALASKA  
N6745—W16000/15x30  
MAY 17 1965  
1955