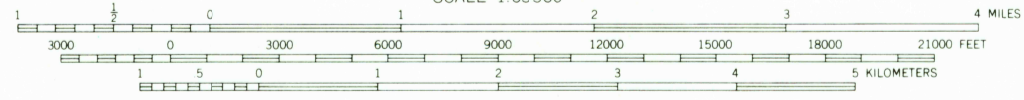
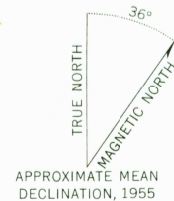


Mapped by the Army Map Service
Edited and published by the Geological Survey
Control by USC&GS and USCE
Topography by photogrammetric methods from aerial photographs taken 1955, field annotated 1955. Map not field checked
Selected hydrographic data compiled from USC&GS Charts 9476 and 9477 (1956). This information is not intended for navigational purposes
Universal Transverse Mercator projection, 1927 North American datum
10,000-foot grid based on Alaska coordinate system, zone 7
1000-meter Universal Transverse Mercator grid ticks, zone 2, shown in blue
Land lines represent unsurveyed and unmarked locations predetermined by the Bureau of Land Management Folio U-1, Umist Meridian
Entire land area lies within the Arctic National Wildlife Range



CONTOUR INTERVAL 50 FEET
DASHED LINES REPRESENT 25-FOOT CONTOURS
DATUM IS MEAN SEA LEVEL
DEPTH CURVES AND SOUNDINGS IN FEET—DATUM IS MEAN LOW WATER
SHORELINE SHOWN REPRESENTS THE APPROXIMATE LINE OF MEAN HIGH WATER
THE MEAN RANGE OF TIDE IS APPROXIMATELY 0.5 OF A FOOT

FOR SALE BY U. S. GEOLOGICAL SURVEY
FAIRBANKS, ALASKA 99701, DENVER, COLORADO 80225, OR WASHINGTON, D. C. 20242
A FOLDER DESCRIBING TOPOGRAPHIC MAPS AND SYMBOLS IS AVAILABLE ON REQUEST

U.S.G.S.
FILE COPY
TOPOGRAPHIC DIVISION

ROAD CLASSIFICATION
No roads or trails in this area

QUADRANGLE LOCATION

BARTER ISLAND (A-4), ALASKA
N7000—W14248/15 X 36

1955

USGS
Historical File
Topographic Division

2990
JUL 8 1969