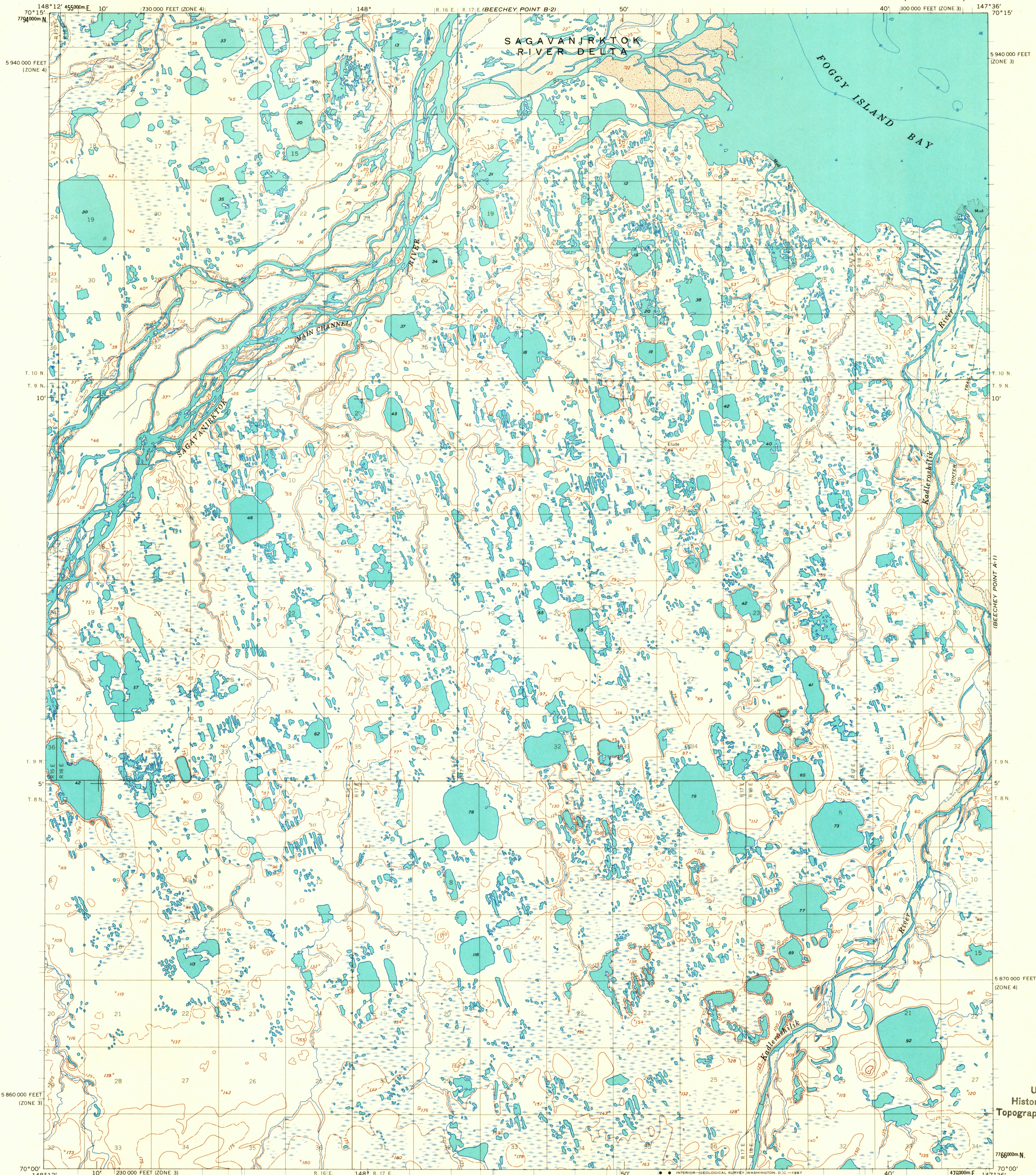


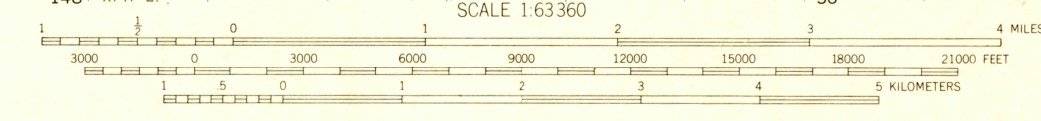
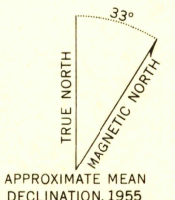
BEECHY POINT B-1



BEECHY POINT A-1

USGS
Historical File
Topographic Division

Mapped by the Army Map Service
Published for civil use by the Geological Survey
Control by USC&GS and USCE
Topography by photogrammetric methods from aerial photographs
taken 1955, field annotated 1955. Map not field checked
Selected hydrographic data compiled from USC&GS
Chart 9473 (1956). This information
is not intended for navigational purposes
Universal Transverse Mercator projection. 1927 North American datum
10,000-foot grids based on Alaska coordinate system, zones 3 and 4
1000-meter Universal Transverse Mercator grid ticks, zone 6, shown in blue
Land lines represent unsurveyed and unmarked locations
predetermined by the Bureau of Land Management
Folios U-2 and U-3, Umiat Meridian
Lake elevations are unchecked



CONTOUR INTERVAL 50 FEET
DASHED LINES REPRESENT 25-FOOT CONTOURS
DATUM IS MEAN SEA LEVEL
DEPTH CURVES AND SOUNDINGS IN FEET—DATUM IS MEAN LOWER LOW WATER
SHORELINE SHOWN REPRESENTS THE APPROXIMATE LINE OF MEAN HIGH WATER
THE MEAN RANGE OF TIDE IS APPROXIMATELY 0.5 OF A FOOT



U.S.G.S.
FILE COPY
TOPOGRAPHIC DIVISION

BEECHY POINT (A-2), ALASKA
N7000—W14736/15X36
1955

SEP 26 1967

2490

SAGAVANIRKTOK D-23