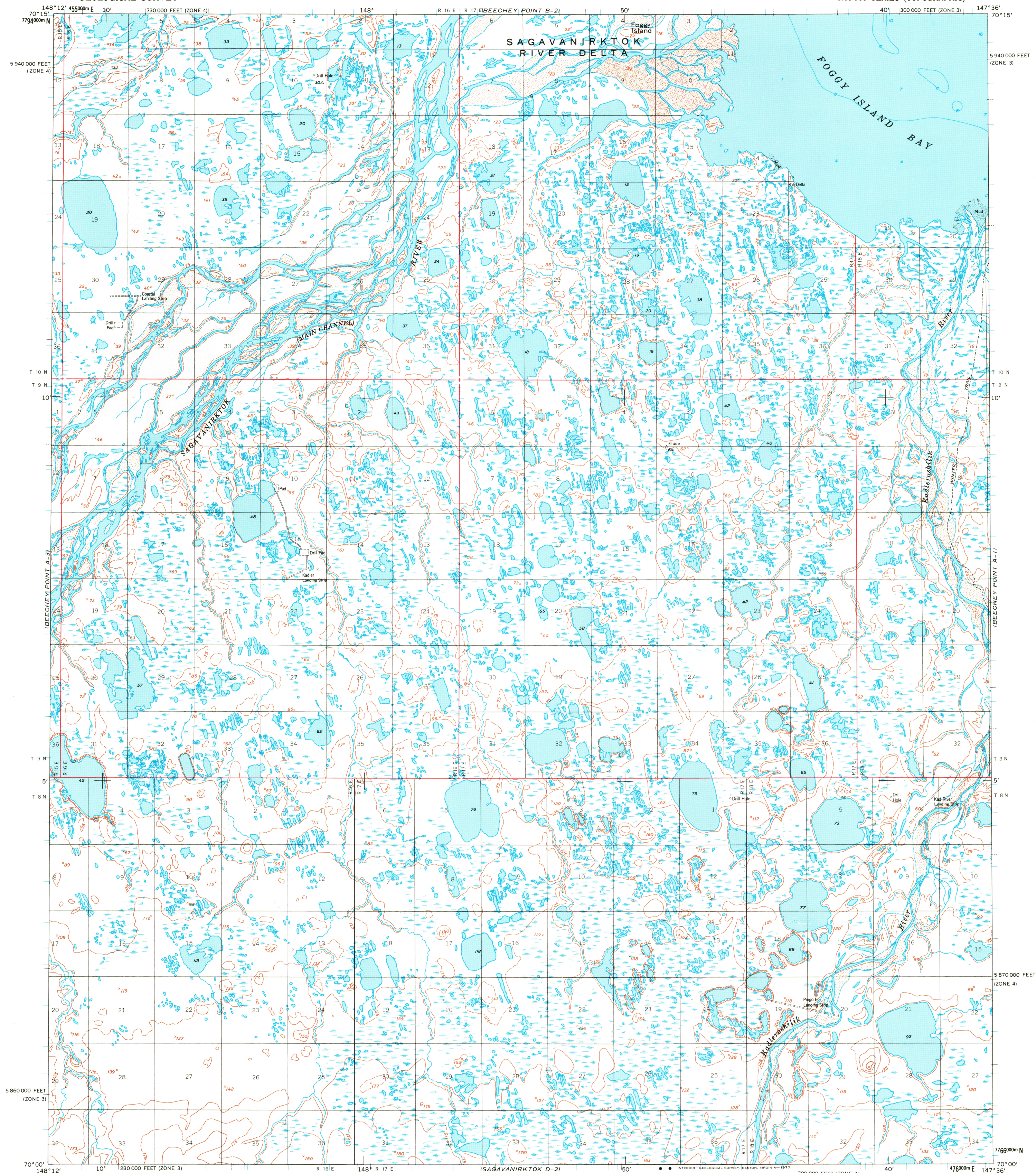
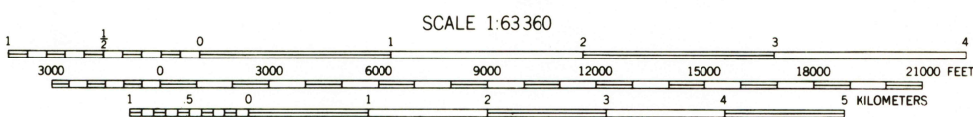
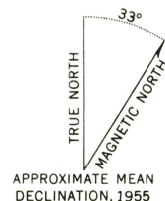


UNITED STATES
DEPARTMENT OF THE INTERIOR
GEOLOGICAL SURVEY

BEECHY POINT (A-2) QUADRANGLE
ALASKA—NORTH SLOPE BOROUGH
1:63 360 SERIES (TOPOGRAPHIC)



Maped by the Army Map Service
Published for civil use by the Geological Survey
Control by USCGS and USCE
Topography by photogrammetric methods from aerial photographs
taken 1955; field annotated 1955. Map not field checked
Selected hydrographic data compiled from USCGS
Chart 9473 (1956). This information
is not intended for navigational purposes
Universal Transverse Mercator projection. 1927 North American datum
10,000-foot grids based on Alaska coordinate system, zones 3 and 4
1000-meter Universal Transverse Mercator grid ticks, zone 6, shown in blue
Land lines represent unsurveyed and unmarked locations
predetermined by the Bureau of Land Management
Folios U-2 and U-3, Umiat Meridian
Lake elevations are unchecked



CONTOUR INTERVAL 50 FEET
DASHED LINES REPRESENT 25-FOOT CONTOURS
NATIONAL GEODETIC VERTICAL DATUM OF 1929
DEPTH CURVES AND SOUNDINGS IN FEET—DATUM IS MEAN LOWER LOW WATER
SHORELINE SHOWN REPRESENTS THE APPROXIMATE LINE OF MEAN HIGH WATER
THE MEAN RANGE OF TIDE IS APPROXIMATELY 0.5 OF A FOOT

FOR SALE BY U.S. GEOLOGICAL SURVEY
FAIRBANKS, ALASKA 99701, DENVER, COLORADO 80225, OR RESTON, VIRGINIA 22092
A FOLDER DESCRIBING TOPOGRAPHIC MAPS AND SYMBOLS IS AVAILABLE ON REQUEST



BEECHY POINT (A-2), ALASKA
N7000—W14736/15X36

1955
MINOR REVISIONS 1975

USCGS
Historical File
Topographic Division

JAN 0 6 1978