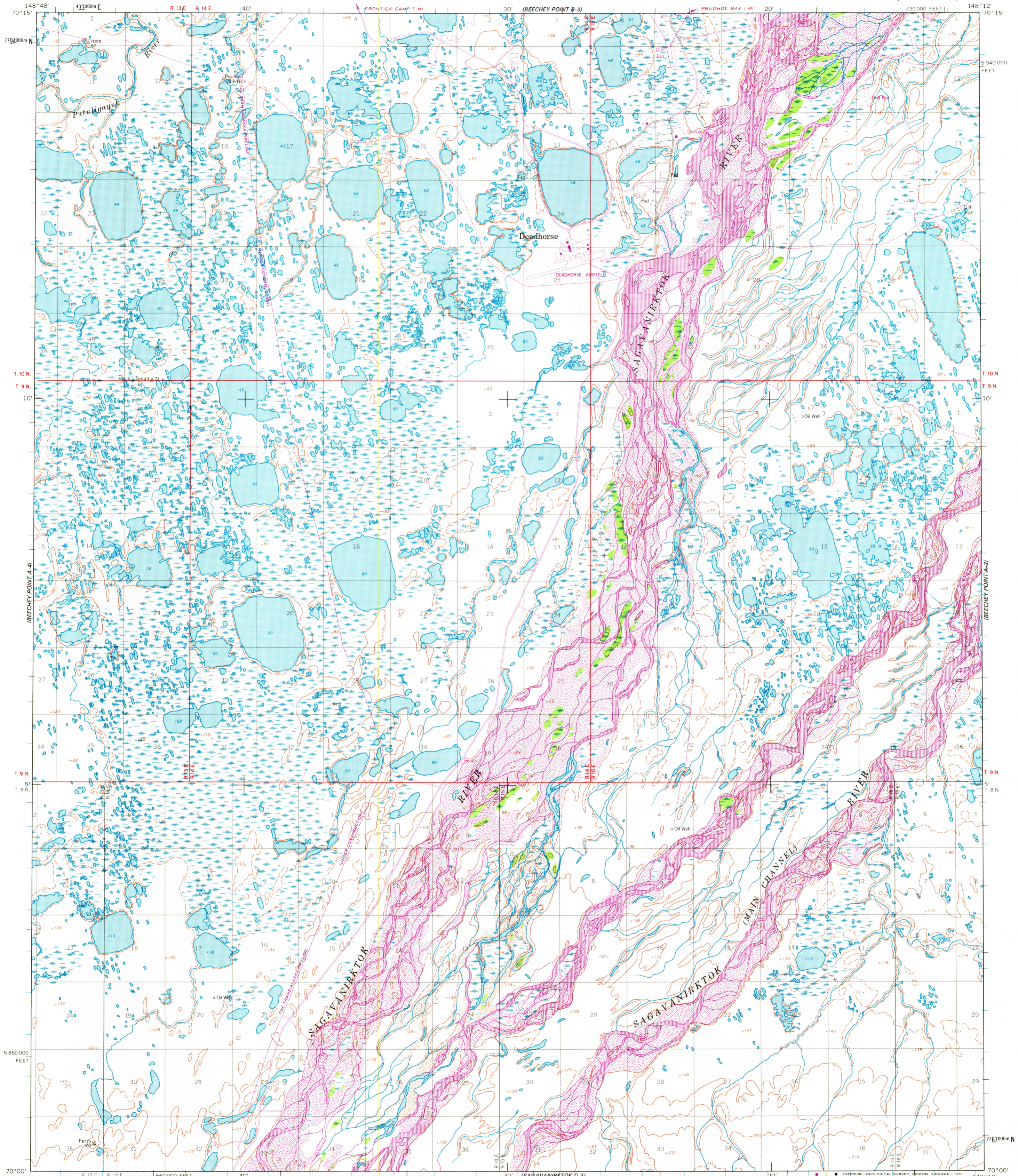


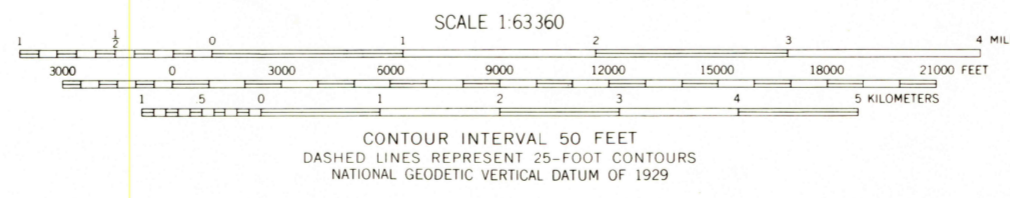
UNITED STATES  
DEPARTMENT OF THE INTERIOR  
GEOLOGICAL SURVEY

BEECHEY POINT (A-3) QUADRANGLE  
ALASKA - NORTH SLOPE BOROUGH  
1:63 360 SERIES (TOPOGRAPHIC)



Mapped by the Army Map Service  
Edited and published by the Geological Survey  
Control by USC&GS and USCE  
Topography by photogrammetric methods from aerial photographs  
taken 1955, field annotated 1955. Map not field checked  
Universal Transverse Mercator projection. 1927 North American datum  
10,000-foot grid ticks based on Alaska coordinate system, zone 4  
1000-meter Universal Transverse Mercator grid ticks,  
zone 6, shown in blue  
Gray land lines represent unsurveyed and unmarked locations  
predetermined by Bureau of Land Management.  
Folio U-3, Umiat Meridian  
Revisions shown in purple compiled from aerial photographs  
taken 1975. This information not field checked

Swamps, as portrayed, indicate only the wetter areas,  
usually of low relief, as interpreted from aerial photographs  
Folio U-3, Umiat Meridian  
To place on the predicted North American Datum 1983 move  
the projection lines 35 meters north and 117 meters east



ROAD CLASSIFICATION  
Light duty ————— Unimproved dirt - - - - -  
BEECHEY POINT (A-3), ALASKA  
N7000—W14812/15 X 36  
1955  
PHOTOREVISED 1975

USGS  
HISTORICAL FILE  
NATIONAL MAPS

JUL 7 1981  
3400