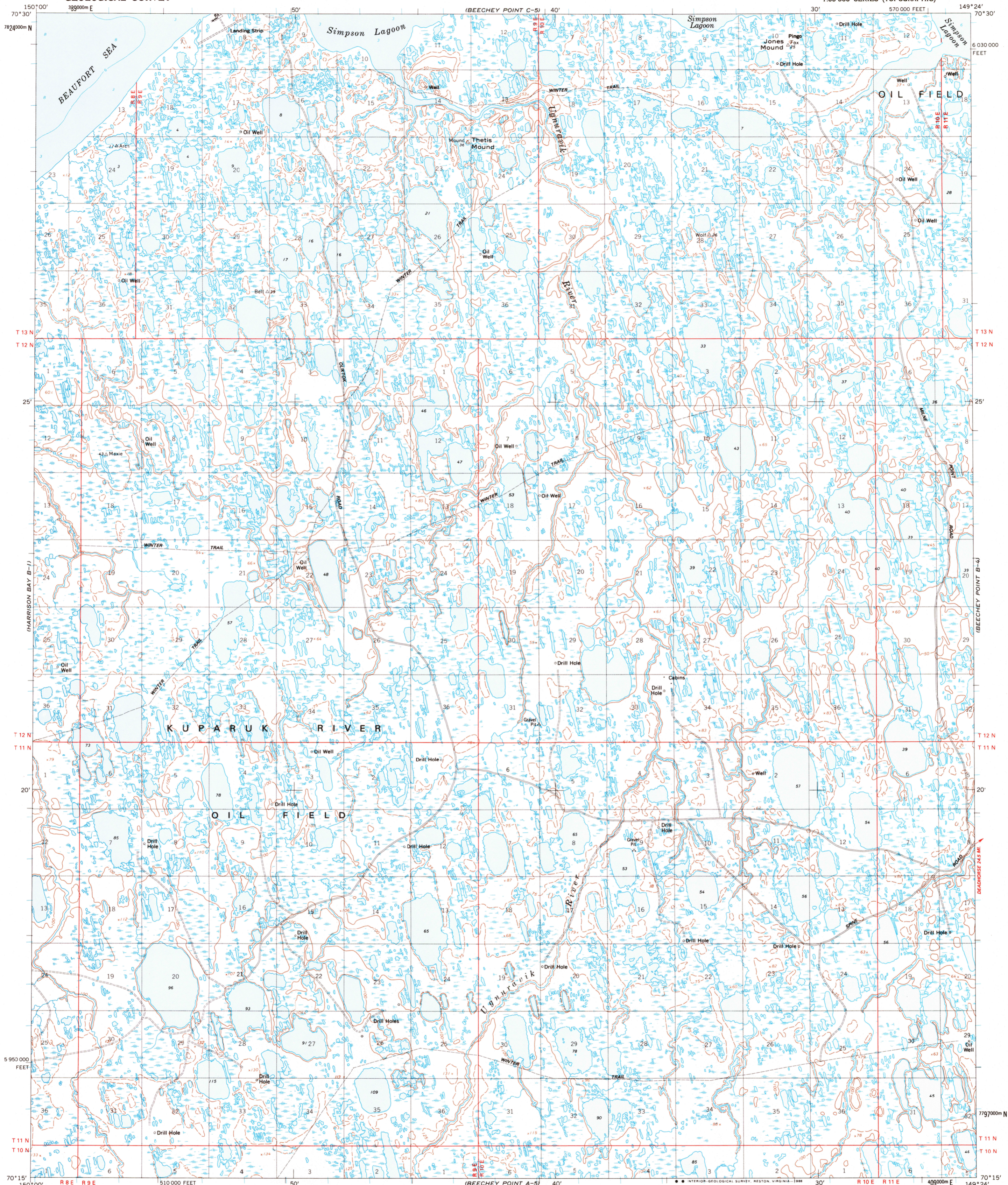
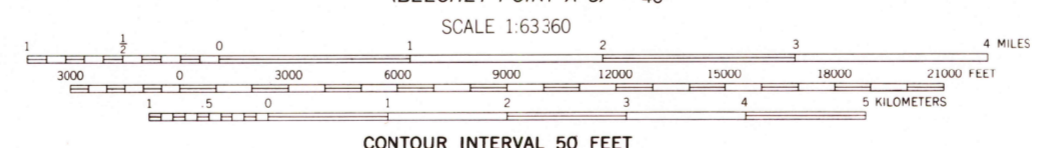


UNITED STATES  
DEPARTMENT OF THE INTERIOR  
GEOLOGICAL SURVEY

BEECHEY POINT (B-5) QUADRANGLE  
ALASKA-NORTH SLOPE BOROUGH  
1:63 360 SERIES (TOPOGRAPHIC)



Mapped by the Defense Mapping Agency  
Edited, and published by the Geological Survey  
Control by USGS, NOS/NOAA and USCE  
Topography by photogrammetric methods from aerial photographs  
taken 1955, field annotated 1955. Map not field checked  
Selected hydrographic data compiled from NOS/NOAA  
Chart 15062 (1953)  
This information is not intended for navigational purposes  
Projection and 1000-meter grid ticks shown in blue:  
Universal Transverse Mercator, zone 4  
10,000-foot grid ticks based on Alaska coordinate  
system, zone 6, 1927 North American Datum  
To place on the predicted North American Datum 1983 move  
the projection lines 36 meters north and 119 meters east  
Gray land lines represent unsurveyed and unmarked locations  
predetermined by the Bureau of Land Management  
Folio U-3, Umat Meridian  
Lake elevations are un-checked  
Swamps, as portrayed, indicate only the wetter areas,  
usually of low relief, as interpreted from aerial photographs



SCALE 1:63 360  
CONTOUR INTERVAL 50 FEET  
DASHED LINES REPRESENT 25-FOOT CONTOURS  
NATIONAL GEODETIC VERTICAL DATUM OF 1929  
DEPTH CURVES AND SOUNDINGS IN FEET-DATUM IS MEAN LOWER HIGH WATER  
SHORELINE SHOWN REPRESENTS THE APPROXIMATE LINE OF MEAN HIGH WATER  
THE MEAN RANGE OF TIDE IS APPROXIMATELY 0.5 OF A FOOT  
FOR SALE BY U. S. GEOLOGICAL SURVEY  
FAIRBANKS, ALASKA 99701, DENVER, COLORADO 80225, OR RESTON, VIRGINIA 22092  
A FOLDER DESCRIBING TOPOGRAPHIC MAPS AND SYMBOLS IS AVAILABLE ON REQUEST



ROAD CLASSIFICATION  
Light-duty ..... Unimproved dirt .....

BEECHEY POINT (B-5), ALASKA  
70149-C4-TF-063  
1955  
MINOR REVISION 1987

USGS NMD HISTORICAL MAP  
JUL 19 1988  
REC'D FILE COPY