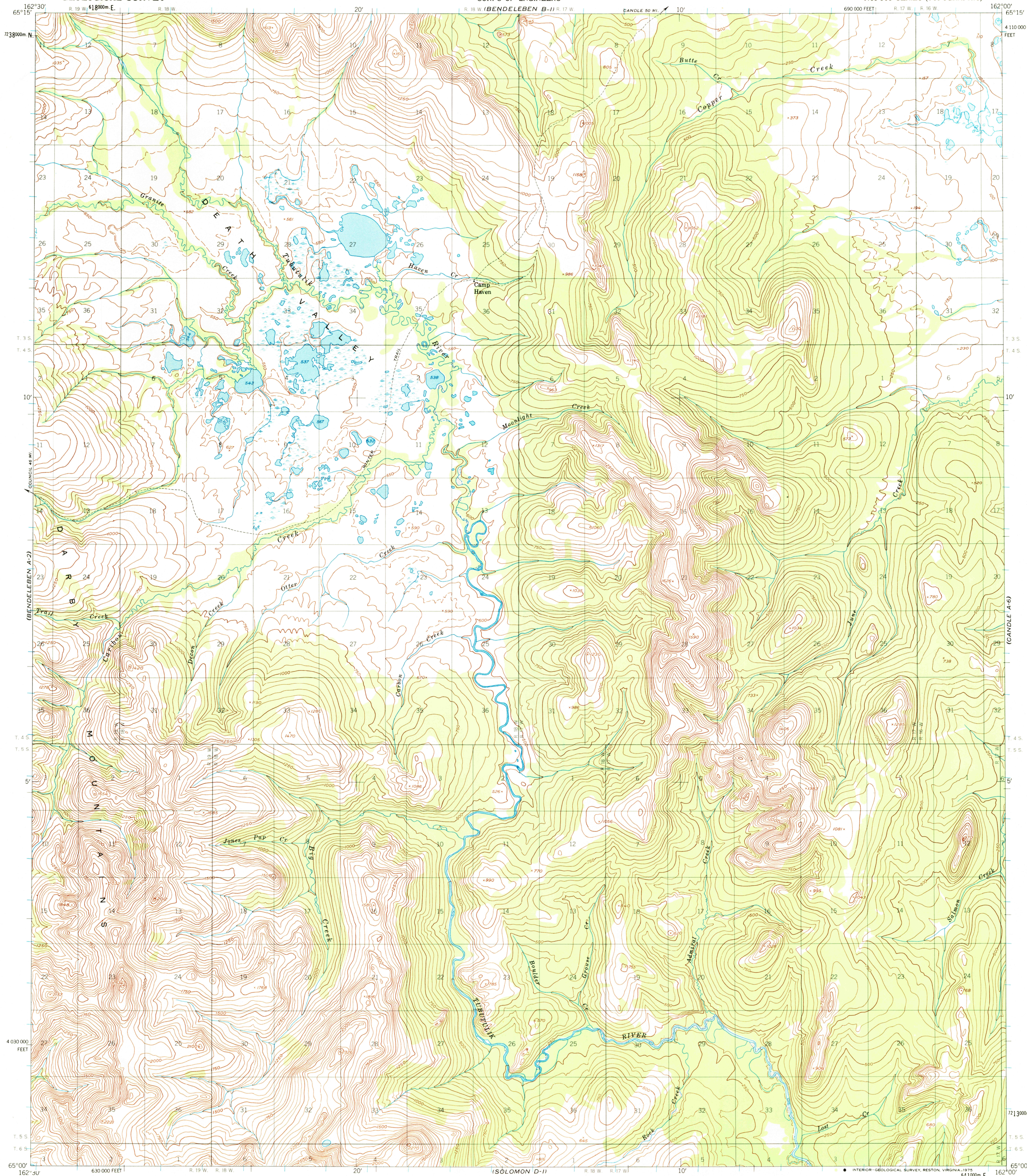


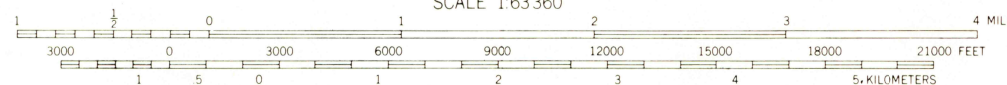
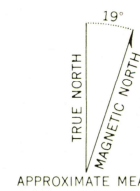
UNITED STATES  
DEPARTMENT OF THE INTERIOR  
GEOLOGICAL SURVEY

UNITED STATES  
DEPARTMENT OF THE ARMY  
CORPS OF ENGINEERS

BENDELEBEN (A-I) QUADRANGLE  
ALASKA  
1:63 360 SERIES (TOPOGRAPHIC)



Map by the Army Map Service  
Published for civil use by the Geological Survey  
Control by USGS, USC&GS and USCE  
Topography by photogrammetric methods from aerial photographs  
taken 1950. Map not field checked.  
Universal Transverse Mercator projection, 1927 North American datum  
10,000 foot grid based on Alaska coordinate system, zone 7  
1000 meter Universal Transverse Mercator grid ticks,  
zone 3, shown in blue  
Land lines represent unsurveyed and unmarked locations  
predetermined by the Bureau of Land Management  
Folios K-12 and K-13, Kaitel River Meridian



CONTOUR INTERVAL 50 FEET  
DASHED LINES REPRESENT 25 FOOT CONTOURS  
NATIONAL GEODETIC VERTICAL DATUM OF 1929

FOR SALE BY U. S. GEOLOGICAL SURVEY  
FAIRBANKS, ALASKA 99701, DENVER, COLORADO 80225, OR RESTON, VIRGINIA 22092  
A FOLDER DESCRIBING TOPOGRAPHIC MAPS AND SYMBOLS IS AVAILABLE ON REQUEST



USGS  
Historical File  
Topographic Division

ROAD CLASSIFICATION  
Trails

BENDELEBEN (A-I), ALASKA  
N6500-W16200/15x30

1950  
MAJOR REVISIONS 1972

APR 2 1975