

(BENDELEBEN B-4)

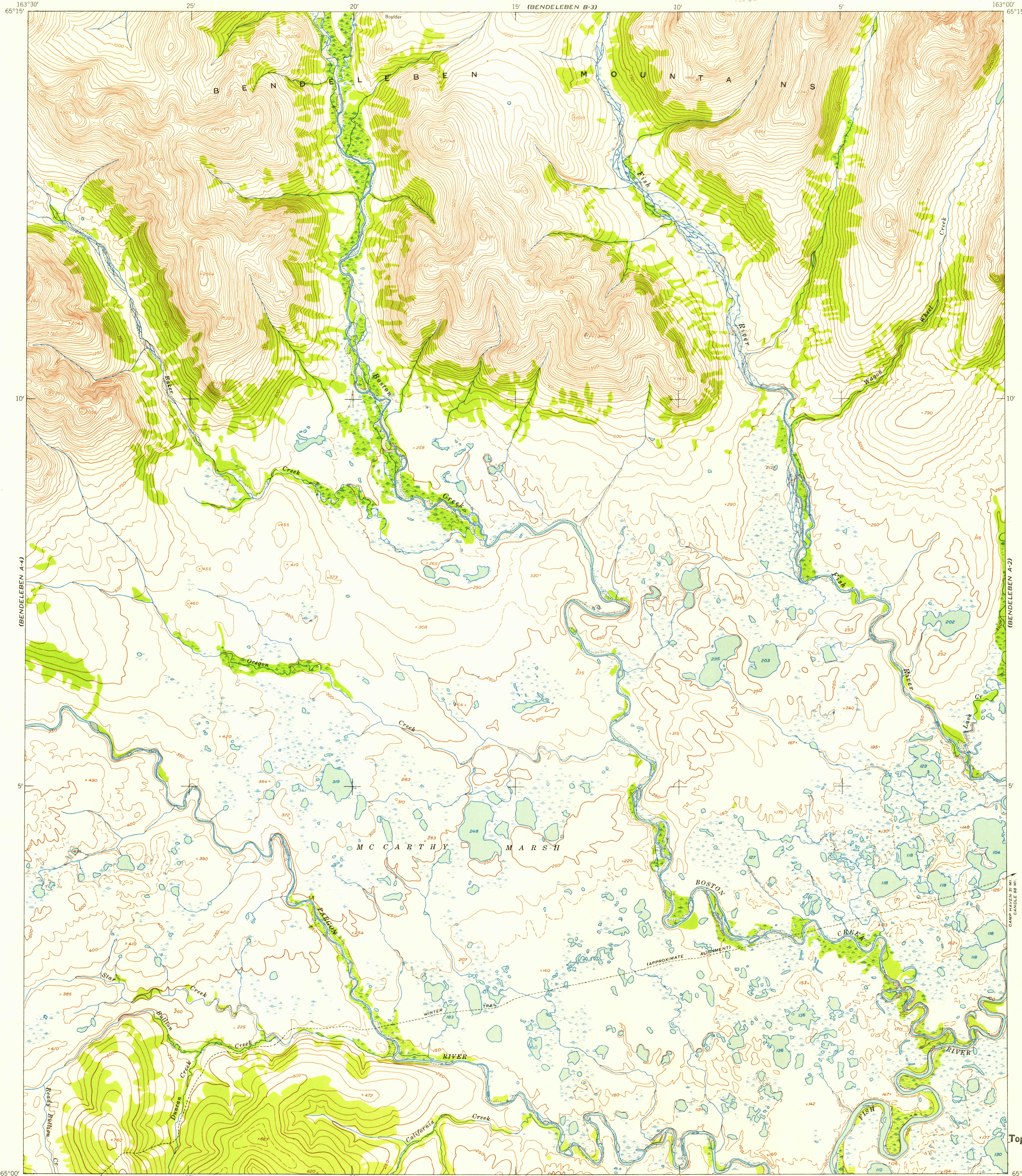
UNITED STATES  
DEPARTMENT OF THE INTERIOR  
GEOLOGICAL SURVEY

UNITED STATES  
DEPARTMENT OF THE ARMY  
CORPS OF ENGINEERS

U.S.G.S.  
FILE COPY  
TOPOGRAPHIC DIVISION

BENDELEBEN (A-3) QUADRANGLE  
ALASKA—SECOND JUDICIAL DIVISION  
1:63 360 SERIES (TOPOGRAPHIC)

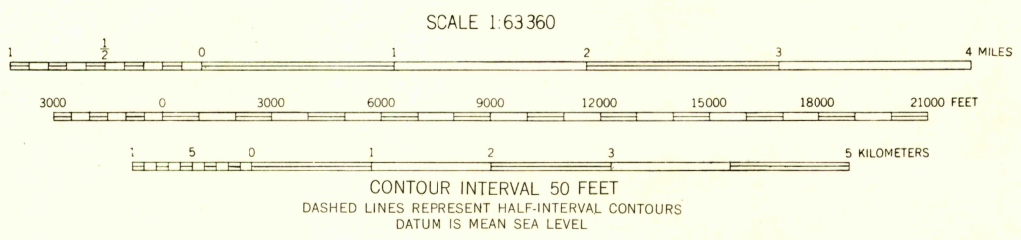
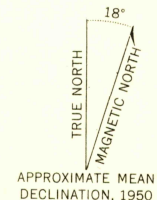
(BENDELEBEN B-2)



(BENDELEBEN A-4)

(BENDELEBEN A-2)

Maped by the Army Map Service  
Published for civil use by the Geological Survey  
Control by USGS, USC&GS, and USCE  
Topography from aerial photographs by photogrammetric methods  
Aerial photographs taken 1950. Map not field checked  
Universal Transverse Mercator projection, zone 3  
1927 North American datum  
Unchecked elevations are shown in brown



ROAD CLASSIFICATION

ALL WEATHER ROADS	DRY WEATHER ROADS
Hard-surface .....	Improved dirt .....
Other .....	Unimproved dirt .....
Trails .....	



FOR SALE BY U. S. GEOLOGICAL SURVEY  
FAIRBANKS, ALASKA FEDERAL CENTER, DENVER, COLORADO WASHINGTON 25, D. C.  
A FOLDER DESCRIBING TOPOGRAPHIC MAPS AND SYMBOLS IS AVAILABLE ON REQUEST

U.S.G.S. BENDELEBEN (A-3), ALASKA  
N 6500—W 16300/15x30  
1950  
FILE COPY  
TOPOGRAPHIC DIVISION  
HISTORICAL

USGS  
Historical File  
Topographic Division

OCT 26 1955