

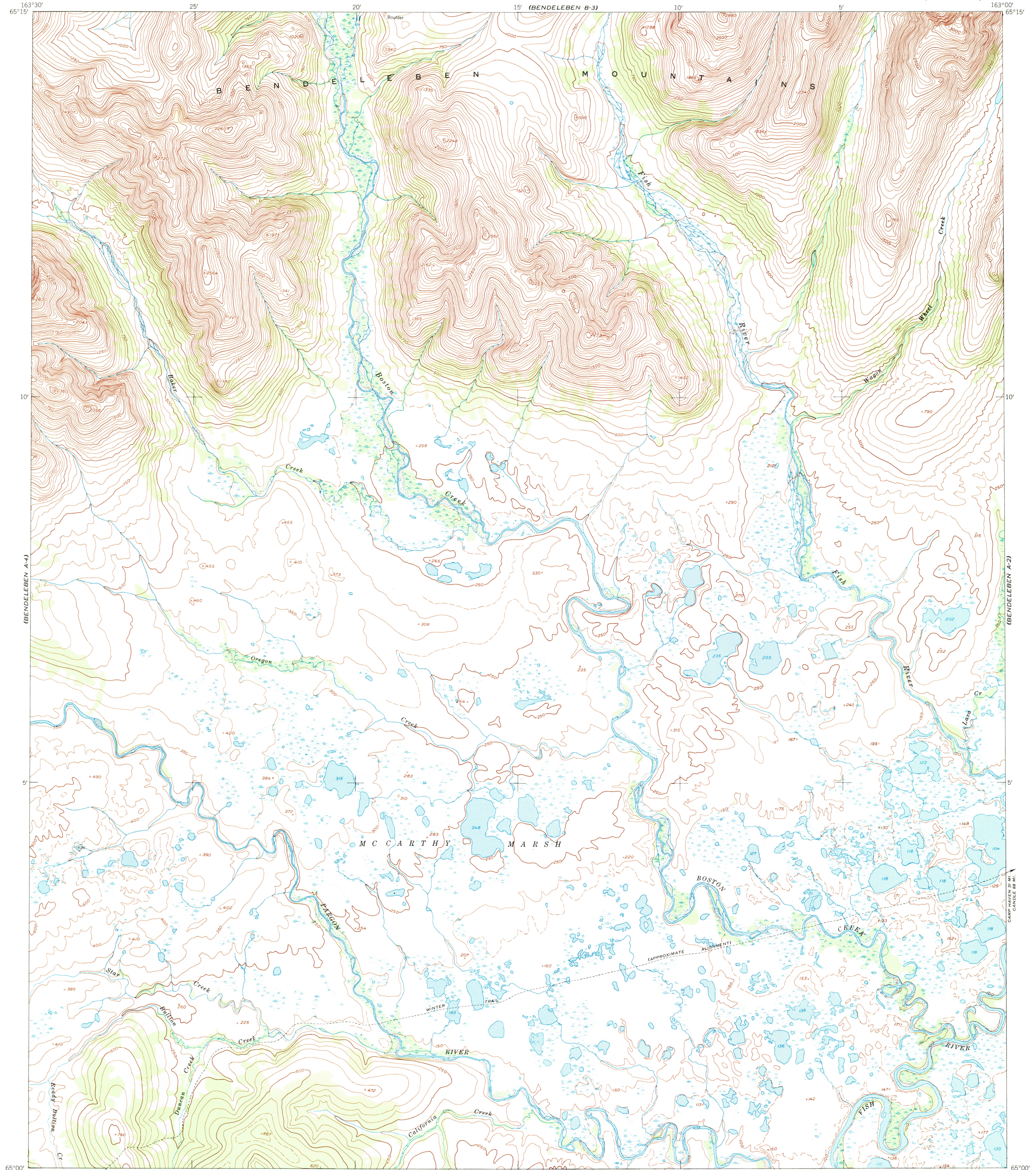
BENDELEBEN (B-4)

UNITED STATES
DEPARTMENT OF THE INTERIOR
GEOLOGICAL SURVEY

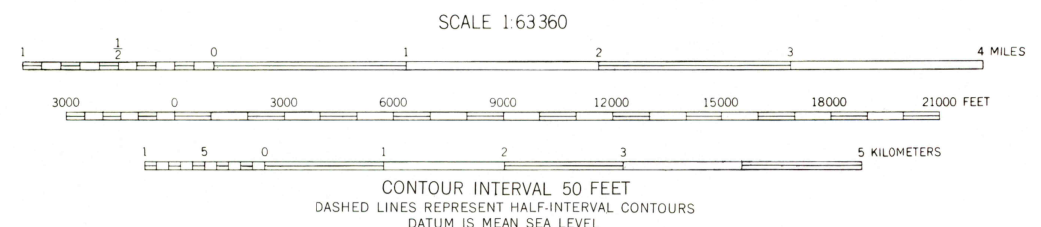
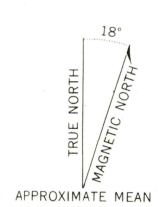
UNITED STATES
DEPARTMENT OF THE ARMY
CORPS OF ENGINEERS
15' (BENDELEBEN B-3)

BENDELEBEN (A-3) QUADRANGLE
ALASKA—SECOND JUDICIAL DIVISION
1:63 360 SERIES (TOPOGRAPHIC)

BENDELEBEN (B-2)



Mapped by the Army Map Service
Published for civil use by the Geological Survey
Control by USGS, USC&GS, and USCE
Topography from aerial photographs by photogrammetric methods
Aerial photographs taken 1950. Map not field checked
Universal Transverse Mercator projection, zone 3
1927 North American datum
Unchecked elevations are shown in brown

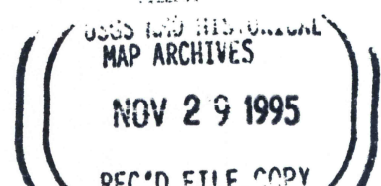


ROAD CLASSIFICATION

ALL WEATHER ROADS	DRY WEATHER ROADS
Hard-surface:	None
Other-surface:	Improved dirt:
Trails:	Unimproved dirt:

FOR SALE BY U. S. GEOLOGICAL SURVEY
FAIRBANKS, ALASKA 99701, DENVER, COLORADO 80225, OR RESTON, VIRGINIA 22092
A FOLDER DESCRIBING TOPOGRAPHIC MAPS AND SYMBOLS IS AVAILABLE ON REQUEST

BENDELEBEN (A-3), ALASKA
N6500-W16300/15x30
1950



(SOLOMON D-4)

(SOLOMON D-2)