

(BENDELEBEN B-6)

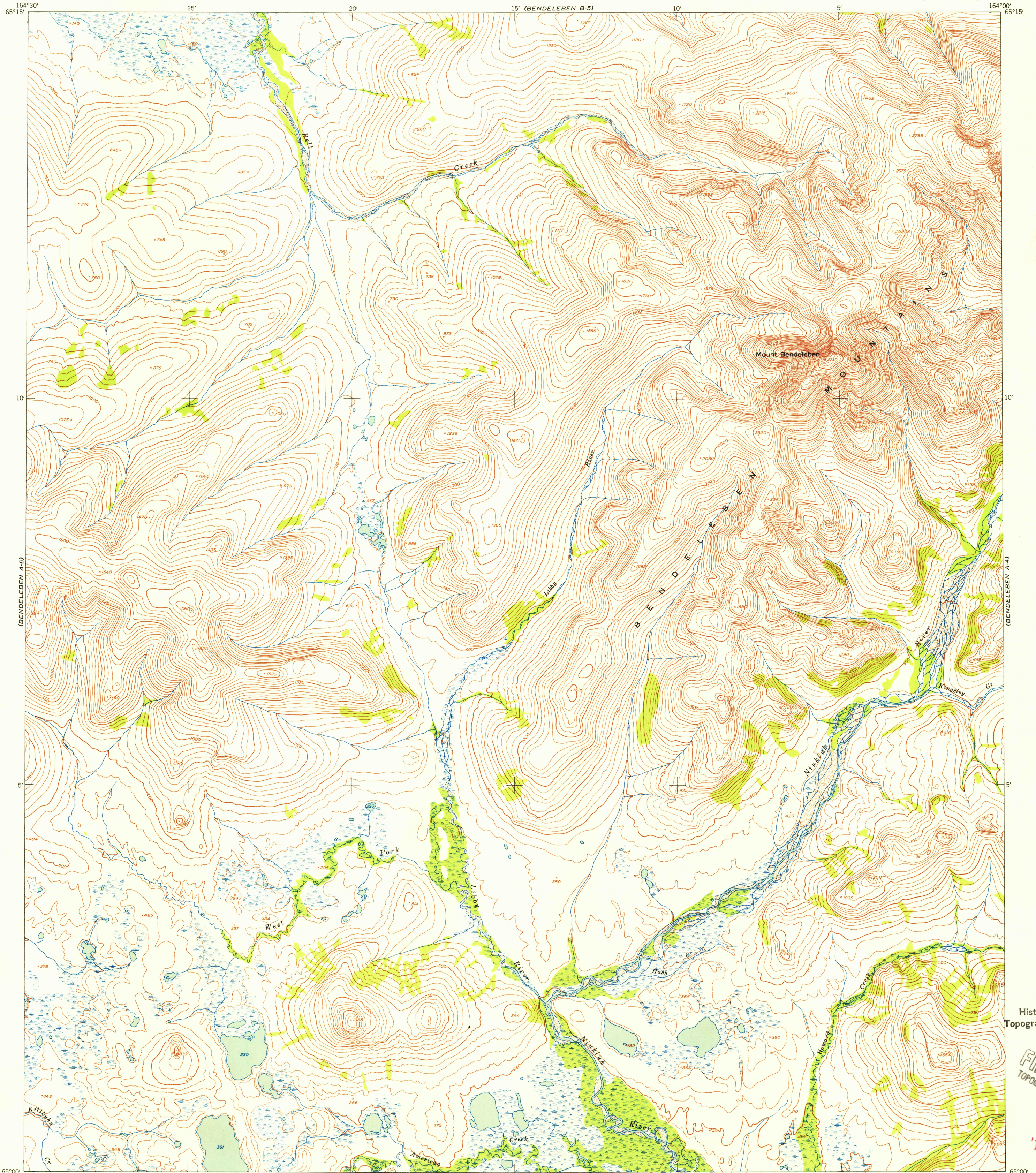
(BENDELEBEN B-4)

UNITED STATES  
DEPARTMENT OF THE INTERIOR  
GEOLOGICAL SURVEY

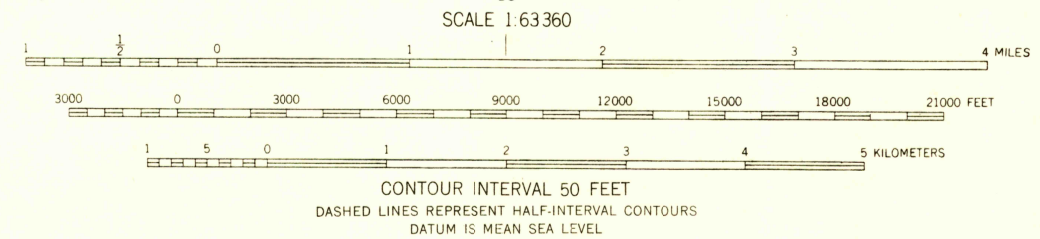
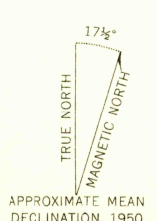
UNITED STATES  
DEPARTMENT OF THE ARMY  
CORPS OF ENGINEERS

U.S.G.S.  
FILE COPY  
TOPOGRAPHIC DIVISION

BENDELEBEN (A-5) QUADRANGLE  
ALASKA—SECOND JUDICIAL DIVISION  
1:63 360 SERIES (TOPOGRAPHIC)



Mapped by the Army Map Service  
Published for civil use by the Geological Survey  
Control by USGS, USC&GS, and USCE  
Topography from aerial photographs by multiplex methods  
Aerial photographs taken 1950. Map not field checked  
Universal Transverse Mercator projection, zone 3  
1927 North American datum  
Unchecked elevations are shown in brown



ROAD CLASSIFICATION

ALL WEATHER ROADS		DRY WEATHER ROADS	
Hand-surface	None	Improved dirt	None
Other	None	Unimproved dirt	None
Trails	None		None

BENDELEBEN (A-5), ALASKA  
N6500-W16400/15x30  
1950

FOR SALE BY U. S. GEOLOGICAL SURVEY  
FAIRBANKS, ALASKA FEDERAL CENTER, DENVER, COLORADO WASHINGTON 25, D. C.  
A FOLDER DESCRIBING TOPOGRAPHIC MAPS AND SYMBOLS IS AVAILABLE ON REQUEST

USGS  
Historical File  
Topographic Division

U.S.G.S.  
FILE COPY  
TOPOGRAPHIC DIVISION

'HISTORICAL'

(SOLOMON D-4)

NOV 8 1955