

U.S.G.S.
FILE COPY
TOPOGRAPHIC DIVISION

USGS
Historical File
Topographic Division

U.S.G.S.
FILE COPY
TOPOGRAPHIC DIVISION

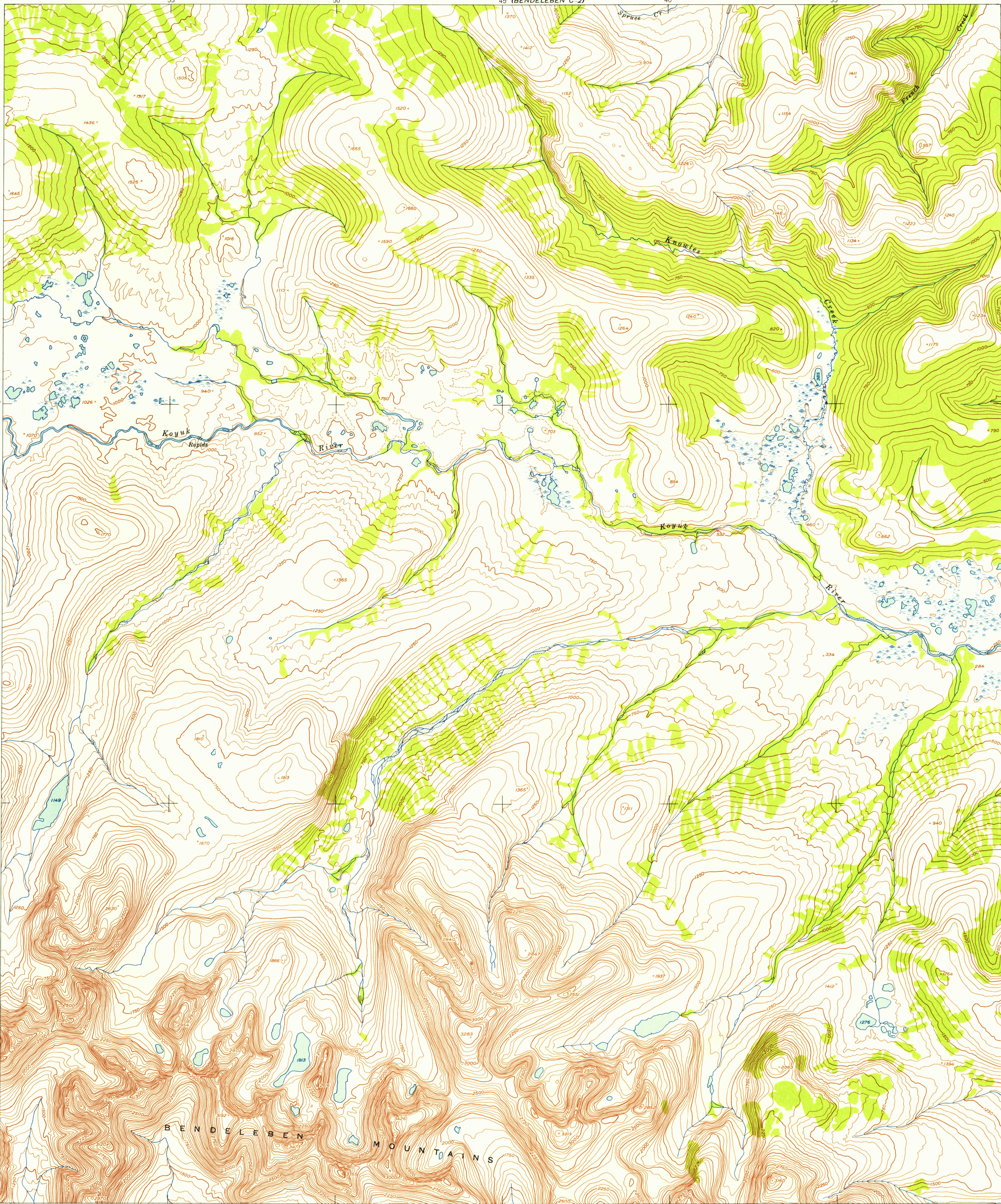
HISTORICAL

BENDELEBEN (B-2), ALASKA
N6515-W16230/15x30

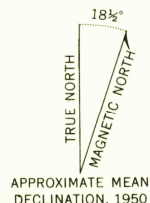
1950

DEC 23 1955

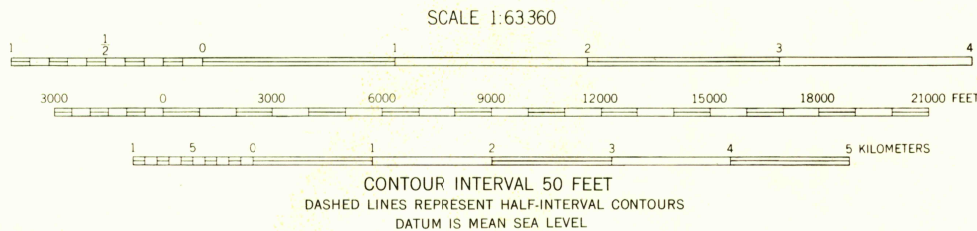
2135



Mapped by the Army Map Service
Published for civil use by the Geological Survey
Control by USGS, USC&GS, and USCE
Topography from aerial photographs by photogrammetric methods
Aerial photographs taken 1950. Map not field checked
Universal Transverse Mercator projection, zone 3
1927 North American datum
Unchecked elevations are shown in brown



APPROXIMATE MEAN
DECLINATION, 1950



ROAD CLASSIFICATION			
ALL WEATHER ROADS		DRY WEATHER ROADS	
Hard-surface	None	Improved dirt	None
Other	None	Unimproved dirt	None
Trails	None		

FOR SALE BY U. S. GEOLOGICAL SURVEY
FAIRBANKS, ALASKA FEDERAL CENTER, DENVER, COLORADO WASHINGTON 25, D. C.
A FOLDER DESCRIBING TOPOGRAPHIC MAPS AND SYMBOLS IS AVAILABLE ON REQUEST