

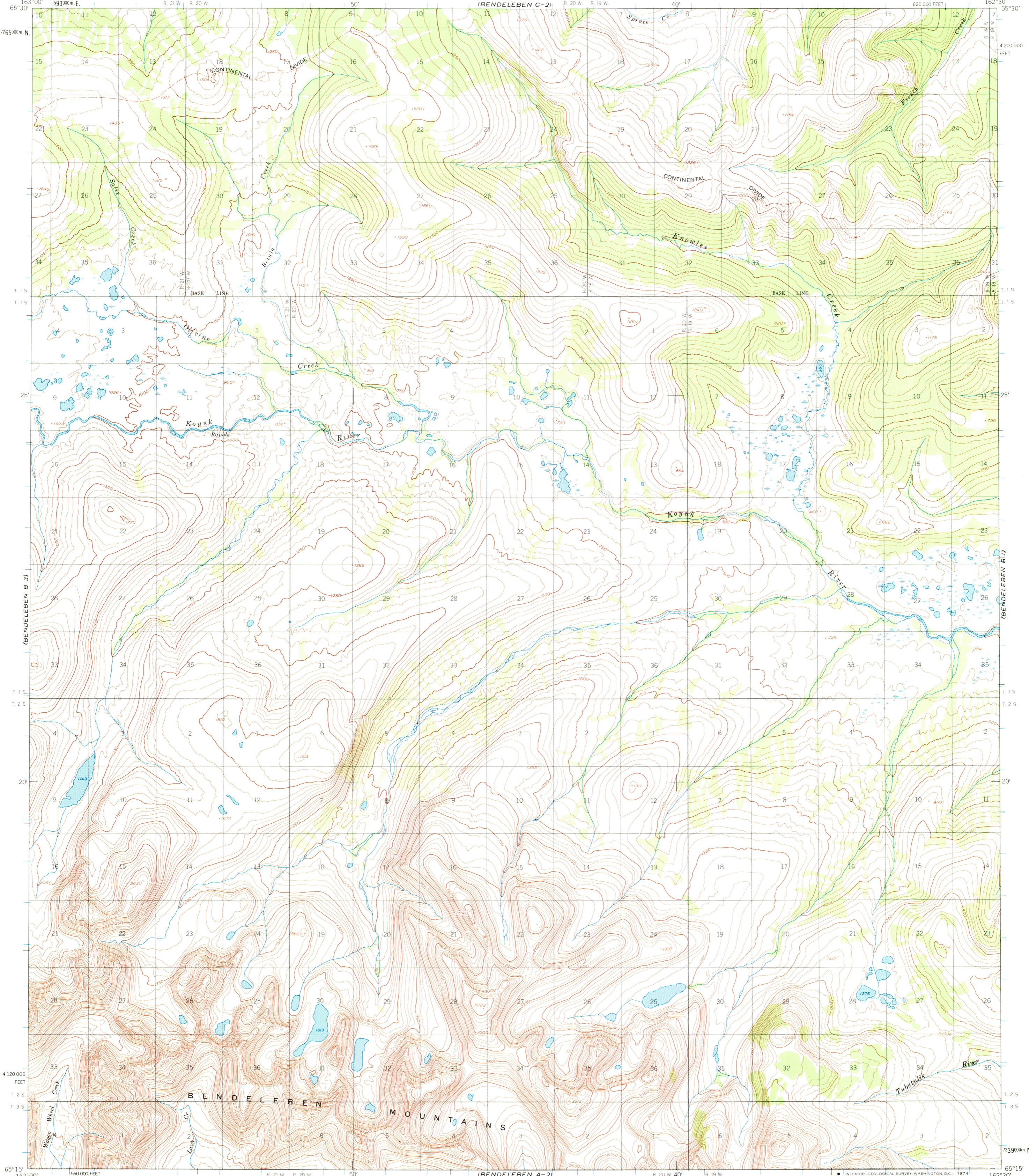
(BENDELEBEN C-2)

UNITED STATES
DEPARTMENT OF THE INTERIOR
GEOLOGICAL SURVEY

UNITED STATES
DEPARTMENT OF THE ARMY
CORPS OF ENGINEERS

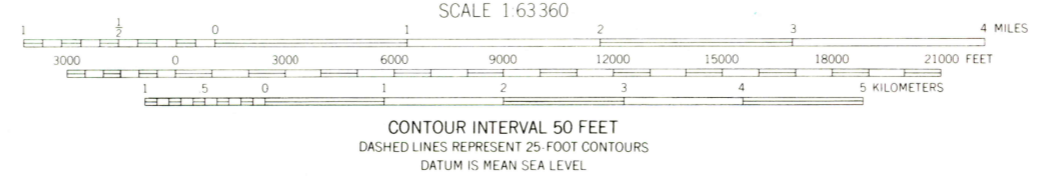
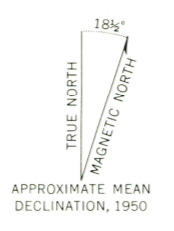
BENDELEBEN (B-2) QUADRANGLE
ALASKA
1:63 360 SERIES (TOPOGRAPHIC)

(BENDELEBEN C-1)



(BENDELEBEN A-3)

Mapped by the Army Map Service
Published for civil use by the Geological Survey
Control by USGS, USCGS and USCE
Topography by photogrammetric methods from aerial photographs taken 1950. Map not field checked
Universal Transverse Mercator projection, 1927 North American datum
10,000-foot grid based on Alaska coordinate system, zone 7
1000-meter Universal Transverse Mercator grid ticks, zone 3, shown in blue
Land lines represent unsurveyed and unmarked locations predetermined by the Bureau of Land Management
Folios K-6 and K-13, Kateel River Meridian



ROAD CLASSIFICATION
No roads or trails in this area

APR 23 1974

BENDELEBEN (B-2), ALASKA
N6515-W16230/15x30

1950
MINOR REVISIONS 1973

FOR SALE BY U. S. GEOLOGICAL SURVEY
FAIRBANKS, ALASKA 99701, DENVER, COLORADO 80225, OR WASHINGTON, D. C. 20244
A FOLDER DESCRIBING TOPOGRAPHIC MAPS AND SYMBOLS IS AVAILABLE ON REQUEST

USGS
Historical File
Topographic Division

1410