

(BENDELEBEN C-5)

(BENDELEBEN C-3)

UNITED STATES  
DEPARTMENT OF THE INTERIOR  
GEOLOGICAL SURVEY

UNITED STATES  
DEPARTMENT OF THE ARMY  
CORPS OF ENGINEERS

BENDELEBEN (B-4) QUADRANGLE  
ALASKA—SECOND JUDICIAL DIVISION  
1:63 360 SERIES (TOPOGRAPHIC)

U.S.G.S.  
FILE COPY  
TOPOGRAPHIC DIVISION

USGS  
Historical File  
Topographic Division

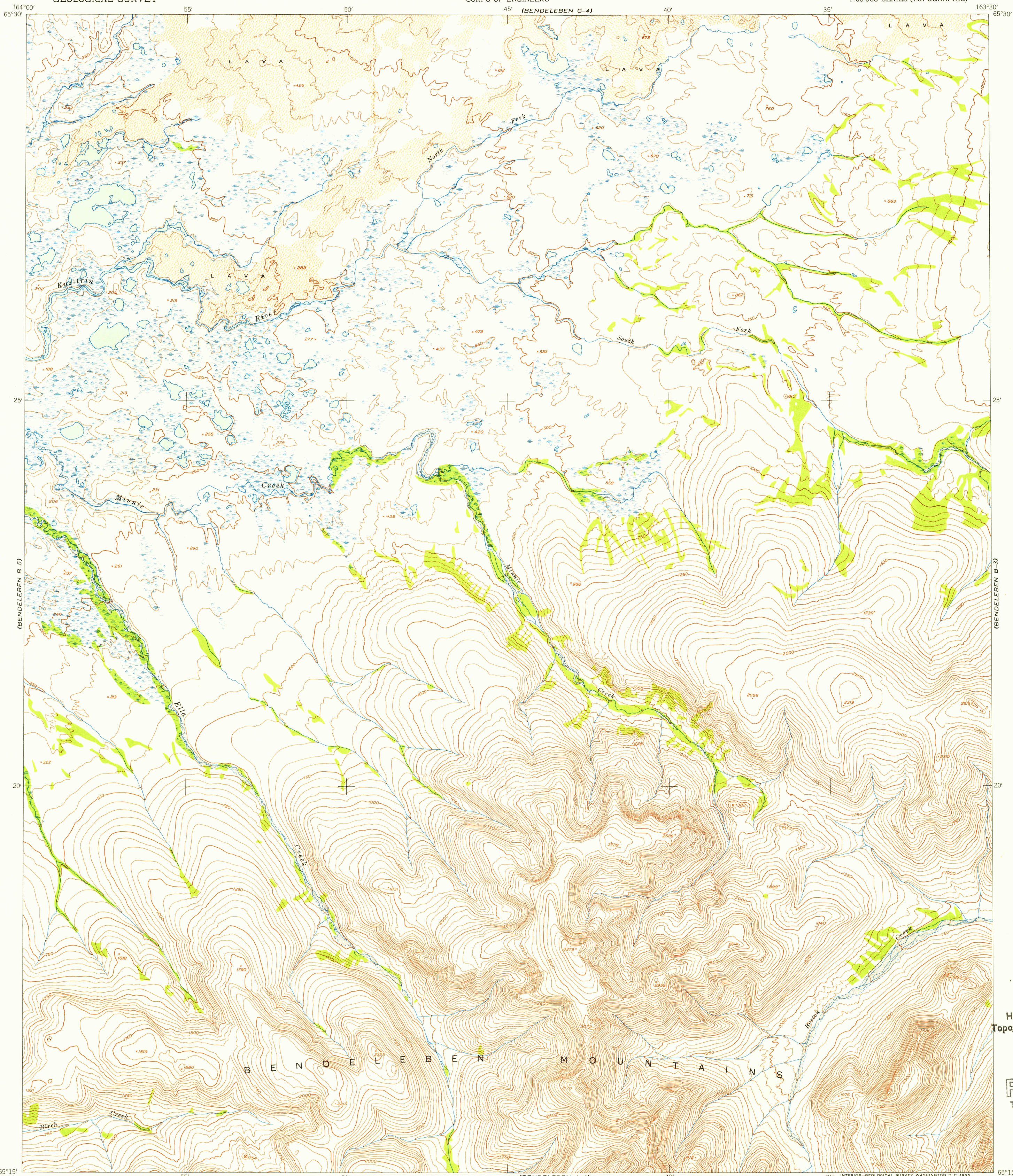
U.S.G.S.  
FILE COPY  
TOPOGRAPHIC DIVISION

HISTORICAL

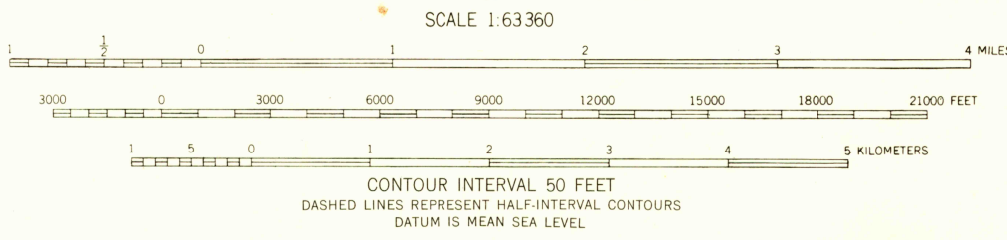
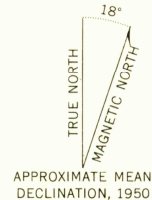
(BENDELEBEN A-3)

DEC 2 2 1955

1995



Mapped by the Army Map Service  
Published for civil use by the Geological Survey  
Control by USGS, USC&GS, and USCE  
Topography from aerial photographs by multiplex methods  
Aerial photographs taken 1949-1950. Map not field checked  
Universal Transverse Mercator projection, zone 3  
1927 North American datum  
Unchecked elevations are shown in brown



ROAD CLASSIFICATION

ALL WEATHER ROADS	DRY WEATHER ROADS
Hard-surface . . . . . None	Improved dirt . . . . . None
Other . . . . . None	Unimproved dirt . . . . . None
Trails . . . . . None	

BENDELEBEN (B-4), ALASKA  
N6515-W16330/15x30  
1950

FOR SALE BY U. S. GEOLOGICAL SURVEY  
FAIRBANKS, ALASKA FEDERAL CENTER, DENVER, COLORADO WASHINGTON 25, D. C.  
A FOLDER DESCRIBING TOPOGRAPHIC MAPS AND SYMBOLS IS AVAILABLE ON REQUEST