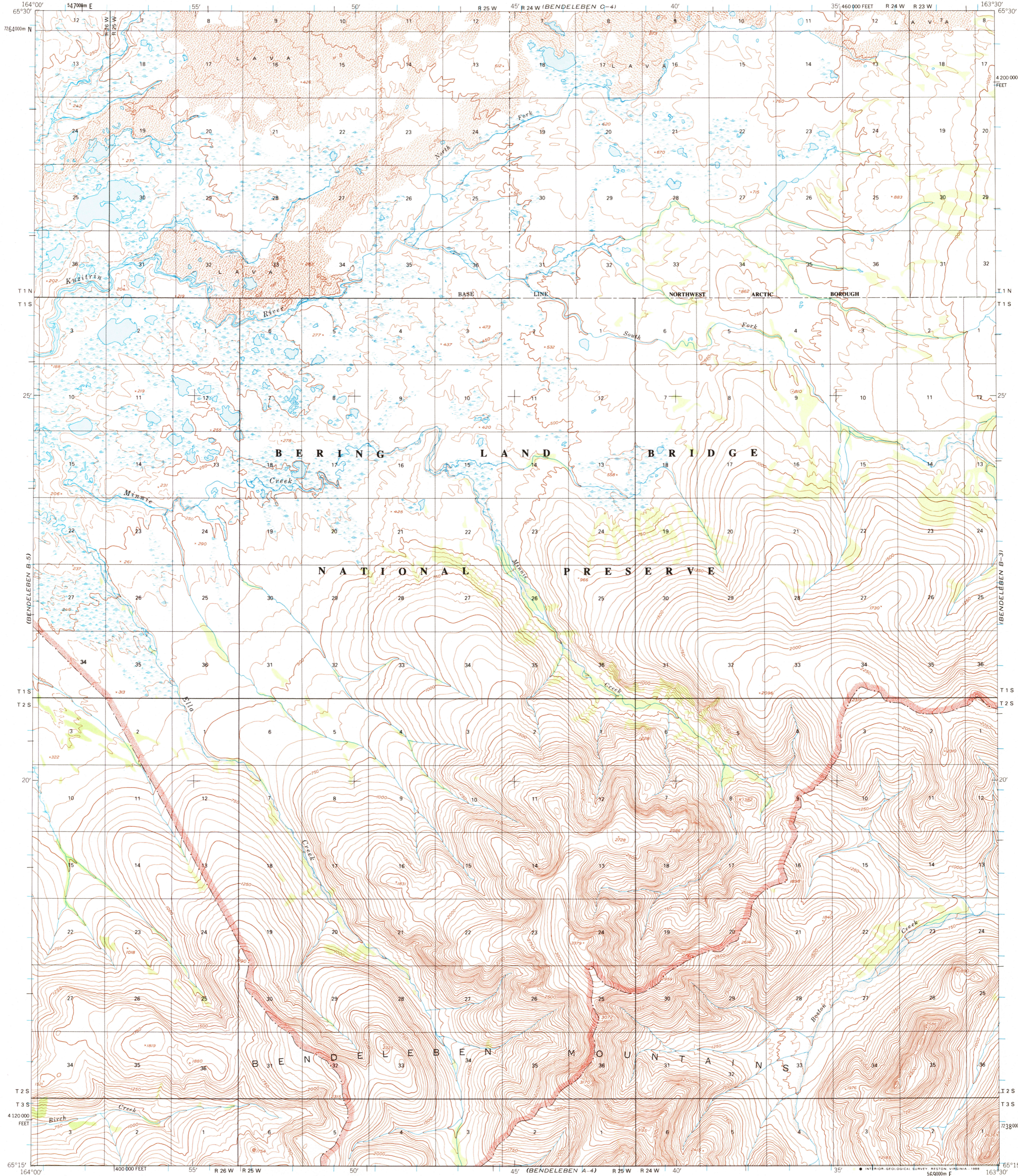
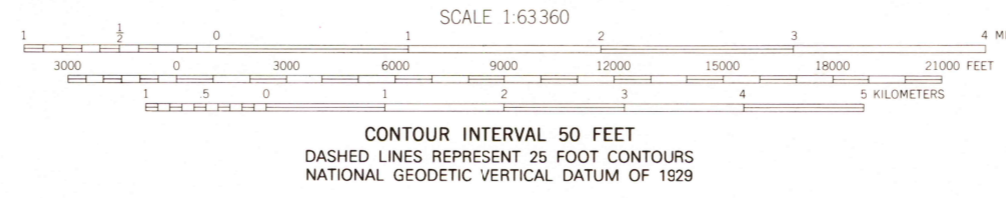


UNITED STATES
DEPARTMENT OF THE INTERIOR
GEOLOGICAL SURVEY

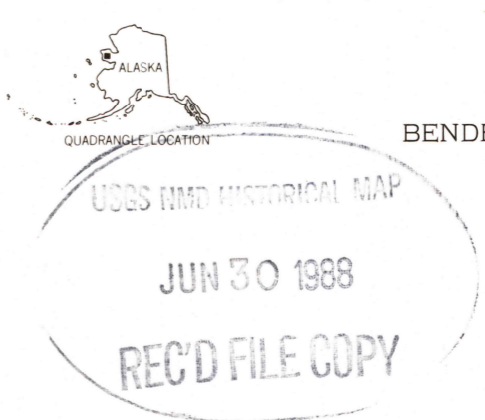
BENDELEBEN (B 4) QUADRANGLE
ALASKA
1:63 360 SERIES (TOPOGRAPHIC)



Mapped by the Defense Mapping Agency
Edited and published by the Geological Survey
Control by USGS, NOS/NOAA and USCE
Topography by photogrammetric methods from aerial photographs
taken 1949 and 1950. Map not field checked
Projection and 1000-meter grid ticks shown in blue:
Universal Transverse Mercator, zone 7
10,000-foot grid ticks based on Alaska coordinate
system, zone 3, 1927 North American Datum
To place on the predicted North American Datum 1983 move
the projection lines 82 meters north and 128 meters east
Land lines represent unsurveyed and unmarked locations
preetermined by the Bureau of Land Management
Folios K-6 and K-13, Kaitlee River Meridian
Swamps, as portrayed, indicate only the wetter areas,
usually of low relief, as interpreted from aerial photographs
Federal reservation boundaries established by the Alaska National
Interest Lands Conservation Act, PL 96-487, Dec. 2, 1980, are
shown as compiled by the administering agencies
There may be private inholdings within the boundaries of the
National or State reservations shown on this map



FOR SALE BY U. S. GEOLOGICAL SURVEY
FAIRBANKS, ALASKA 99701, DENVER, COLORADO 80225, OR RESTON, VIRGINIA 22092
A FOLDER DESCRIBING TOPOGRAPHIC MAPS AND SYMBOLS IS AVAILABLE ON REQUEST



BENDELEBEN (B-4), ALASKA
65163-C5-TF-063
1950
MINOR REVISION 1988

ROAD CLASSIFICATION
No roads or trails in this area

(BENDELEBEN C-3)
(BENDELEBEN B-5)
(BENDELEBEN A-5)

(BENDELEBEN C-4)
(BENDELEBEN B-3)
(BENDELEBEN A-4)