

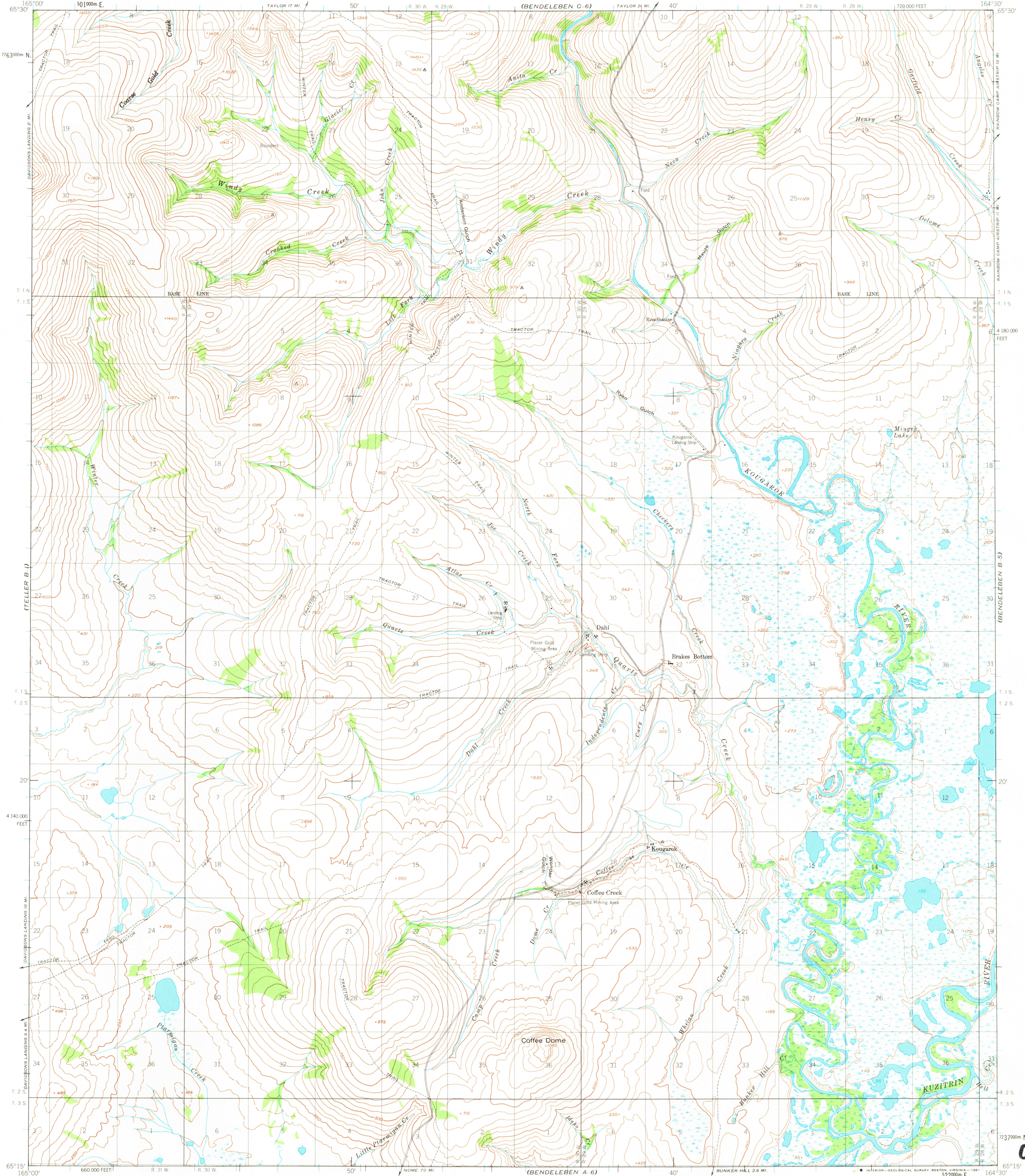
(TELLER C-1)  
(TELLER B-1)  
(TELLER A-1)

(BENDELEBEN C-6)  
(BENDELEBEN B-5)  
(BENDELEBEN A-5)

UNITED STATES  
DEPARTMENT OF THE INTERIOR  
GEOLOGICAL SURVEY

UNITED STATES  
DEPARTMENT OF THE ARMY  
CORPS OF ENGINEERS

BENDELEBEN (B-6) QUADRANGLE  
ALASKA  
1:63 360 SERIES (TOPOGRAPHIC)



Mapped by the Army Map Service  
Published for civil use by the Geological Survey  
Control by USGS, USC&GS and USCE  
Topography by photogrammetric methods from aerial photographs  
taken 1950. Map not field checked  
Universal Transverse Mercator projection, 1927 North American datum  
10,000-foot grid based on Alaska coordinate system, zone 8  
1000-meter Universal Transverse Mercator grid ticks,  
zone 3, shown in blue  
Land lines represent unsurveyed and unmarked locations  
predetermined by the Bureau of Land Management  
Folios K-6 and K-13, Kateel River Meridian  
To place on the predicted North American Datum 1983 move  
the projection lines 84 meters north and 129 meters east



CONTOUR INTERVAL 50 FEET  
DASHED LINES REPRESENT 25-FOOT CONTOURS  
NATIONAL GEODETIC VERTICAL DATUM OF 1929



ROAD CLASSIFICATION  
Light-duty ——— Unimproved dirt - - - - -

BENDELEBEN (B-6), ALASKA  
N6515-W16430/15x30

1950  
MINOR REVISIONS 1966

FOR SALE BY U. S. GEOLOGICAL SURVEY  
FAIRBANKS, ALASKA 99701, DENVER, COLORADO 80225, OR RESTON, VIRGINIA 22092  
A FOLDER DESCRIBING TOPOGRAPHIC MAPS AND SYMBOLS IS AVAILABLE ON REQUEST

OCT 26 1981

160